

# New Products

---



## CONTENTS

CellMax™ FFPE Cell Pellet Slide - The Ultimate Control for IHC and ISH.....	3
TissueMax™ FFPE Mouse Tissue Slides .....	4
Monoclonal Antibodies.....	5
Polyclonal Antibody.....	6
Phosphospecific Antibodies.....	7
Antibody Reagents.....	8

AbboMax scientific professionals have been involved in researching, developing and manufacturing high performance immunoassays reagents for many years. We are delivering high quality products to the scientists in life science field. We are the trusted and dependable supplier to many of the international leading research institutes and clinical diagnostic companies. With original manufacturing more than 90% of our products in our own Silicon Valley Core Facility, we are able to provide bulk quantities of most of our products at an economical price. Please contact us for bulk price quote.

**Contact Information:**

**AbboMax, Inc**

2528 Qume Drive, Suite 8  
San Jose, California, 95131. USA  
Tel: 408-573-1898  
Toll Free: 1-866-628-9898 (USA)  
Fax: 408-573-1858  
Email: [info@abbomax.com](mailto:info@abbomax.com)  
Website: [www.abbomax.com](http://www.abbomax.com)

**Order Information**

Please place order by phone, fax, email or website

**Shipping:**

All shipping and handling charges are prepaid by AbboMax and added to the invoice along with the shipment. If you would like to use your own carrier, please supply the account number when the order is placed. Orders are taken before 12:00PM (Pacific Time) can be shipped same day for the next day delivery domestically. All international orders will be shipped international priority using FedEx.



**Product Warranty:**

AbboMax Inc. warrants its services and products to original purchaser against defects in material and workmanship under normal use and application for a period of one year from date of purchase. AbboMax sole obligation under this warranty shall be to replace defective products that do not perform to our stated specifications. In no case shall AbboMax be liable for incidental or consequential damages. This warranty applies only to products in the original container that have been handled and stored in accordance with AbboMax recommendations. This warranty is in lieu of all other warranties, express or implied, including warranties of merchantability and fitness for a particular purpose.

## CellMax™ FFPE Cell Pellet Slide - The Ultimate Control for IHC and ISH

FFPE cell pellets are commonly used as controls in immunohistochemical (IHC) and *in situ* hybridization (ISH) applications. AbboMax aims to provide cell pellet slides to researchers and laboratories with **AFFORDABILITY, QUALITY, and CONSISTENCY**. The CellMax™ FFPE cell pellets are prepared using a patent-pending process that generates highly homogenous FFPE blocks with any cell density (up to 90% area coverage). Both morphology and biological molecules, including protein and nucleic acid (DNA and RNA) targets are very well preserved for IHC and ISH analysis.

### Consistency and Uniformity

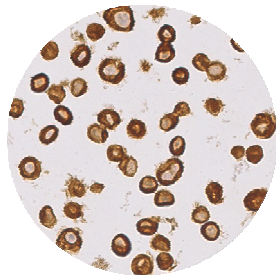
The CellMax™ cell pellets are produced using a patent-pending process, which generates highly consistent density and homogeneity across the entire cell pellet block.



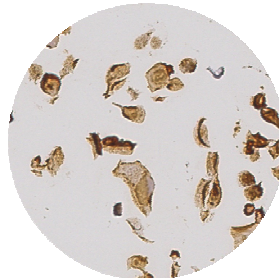
Section #1

Section #200

Section #400



CK7 Ab – SKBR3 Cells  
Harvested by Trypsinization



CK7 Ab – SKBR3 Cells  
Harvested by Trypsin-Free Method

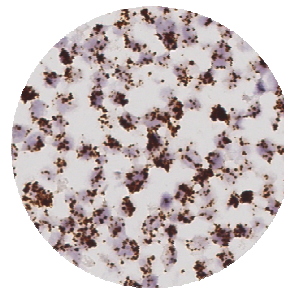
### Immunohistochemistry (IHC)

The CellMax™ slides are perfect controls for Immunohistochemical (IHC) applications. Cells can be harvested by standard trypsinization or a proprietary trypsin-free method to best preserve cell surface antigens while inflicting minimal physical damage that leads to loss of biomarkers.

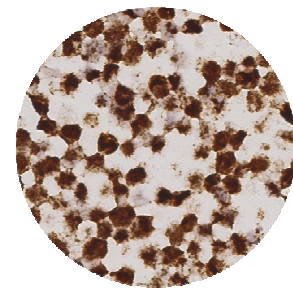
### DNA/RNA *In situ* Hybridization (ISH)

Nucleic acids (DNA/RNA) are perfectly preserved in the CellMax™ cell pellets and are ready for DNA and RNA *in situ* hybridization (ISH) analysis.

\*RNAscope® is an RNA *in situ* hybridization technology developed by Advanced Cell Diagnostics, Inc. (Hayward, CA)



HeLa - PORL2A (low-copy gene)  
RNA-ISH by RNAscope®\*



HeLa – HPV18 E6E7  
RNA-ISH by RNAscope®

### Standard Preparation (Custom cell lines and preparations available)

Fixation:	10% Neutral Buffered Formalin for 24 hours at room temperature (15-25°C)
Embedding:	Paraffin
Section Thickness:	5µm
Stability	> 5 yr

## CellMax™ FFPE Cell Pellet Slides - Catalog

Cell Line	Catalog Number	Cell Line	Catalog Number	Cell Line	Catalog Number
<b>Breast Cancer</b>		<b>Prostate Cancer</b>		<b>Ovarian Cancer</b>	
SKBR3	T210101	PC3	T210401	OVCAR-8	T210801
MCF7	T210102	DU-145	T210402	IGR-OV1	T210802
MDA-MB-231	T210103	<b>Colon Cancer</b>		<b>Renal Cancer</b>	
MDA-MB-468	T210104	SW-620	T210501	SN-12C	T210901
BT474	T210105	HT-29	T210502	TK-10	T210902
T-47D	T210106	HCC-2998	T210503	<b>Liver Cancer</b>	
<b>Lung Cancer</b>		<b>Melanoma</b>		HepG2	T211001
H2228	T210201	SK-MEL-2	T210601	Huh-7	T211002
H23	T210202	SK-MEL-5	T210602	<b>Custom FFPE Cell Line Blocks and Sections</b>	
A549	T210203	M14	T210603	Custom Cell Lines and Pellets	T71001
H460	T210204	M21	T210604	<b>Multi-Cell Line Arrays</b>	
HOP-62	T210205	CHL-1	T210605	Custom Multi-Cell Line Arrays	T71001
H322	T210206	<b>Leukemia</b>			
<b>Cervical Cancer</b>		K-562	T210701		
HeLa	T210301	Jurkat	T210702		
CaSki	T210302	Raji	T210703		

Price: \$8/slide

OEM Price: Inquire

## TissueMax™ FFPE Mouse Tissue Slides - Catalog

Tissue	Catalog Number	Tissue	Catalog Number	Tissue	Catalog Number
Brain (coronal)	T219001	Intestine (Ileum)	T219007	Mouse Multi-tissue FFPE section (Brain, Colon, Heart, Intestine, Kidney, Liver, Lung, Spleen)	T219101
Brain (Sagittal)	T219002	Kidney	T219008		
Colon	T219003	Liver	T219009		
Heart	T219004	Lymph Node	T219010		
Intestine (Duodenum)	T219005	Lung	T219011		
Intestine (Jejunum)	T219006	Pancreas	T219012		
		Stomach	T219013		
		Spleen	T219014		

Genetic Background: BALB/c  
 Age: 8-10 weeks  
 Fixation: 10% Neutral Buffered Formalin for 24 hours at room temperature (15-25°C)  
 Embedding: Paraffin  
 Section Thickness: 5µm

Price: \$7/slide – single slide

\$13/slide – multi-tissue slide

OEM Price: Inquire

## Monoclonal Antibodies

In AbboMax, we translate our long experience into high-quality products and services; continuously build on our products as a supplier in life science. AbboMax monoclonal antibodies are optimized for maximum ratio of the specific signal vs. non-specific background.

Description	Catalogue	Host	Isotyping	Size	Application	Cross Reactivity	Price
Alkaline Phosphatase (AP)	500-7044	Mouse	Mouse IgG1	100 ug	WB, IHC, ELISA	Hu	\$ 239.00
Alpha Fetoprotein(AFP)	603-010	Mouse	Mouse IgG1	100 ug	ELISA, WB, IHC, FC	Hu	\$ 189.00
AMACR	620-980	Mouse	Mouse IgG	100 ug	ELISA, WB, IHC	Hu	\$ 399.00
Bcl-2a	500-1124	Mouse	Mouse IgG1	100 ug	IHC(P), WB, IP, IF, FC	Hu	\$ 269.00
BRCA1	603-930	Mouse	Mouse IgG1	100 ug	IHC, WB	Hu	\$ 255.00
CCR-2	603-850	Mouse	Mouse IgG1	100 ug	IHC	Hu	\$ 299.00
CCR-9	603-860	Mouse	Mouse IgG1	100 ug	IHC	Hu	\$ 299.00
CD15	500-1204	Mouse	Mouse IgM	100 ug	IHC	Hu	\$ 199.00
CD25	603-960	Mouse	Mouse IgG1	100 ug	IHC, WB	Hu	\$ 299.00
CD68/Macrophage	500-6074	Mouse	Mouse IgG1	100 ug	IHC-P	Hu, Ms, Rt	\$ 229.00
c-erbB-2/HER-2	500-12424	Mouse	Mouse IgG1	100 ug	IHC-P, WB	Hu, Ms, Rt	\$ 255.00
CXCR3	600-020	Mouse	Mouse IgG1	100 ug	WB, ELISA	Hu, Ms, Rt	\$ 250.00
cyclic adenosine monophosphate (cAMP)	500-9534	Mouse	Mouse IgG1	100 ug	WB	Hu, Ms, Rt	\$ 319.00
cyclic adenosine monophosphate (cAMP) (Biotinylated)	500-953B	Mouse	Mouse IgG1	100 ug	WB	Hu, Ms, Rt	\$ 275.00
Desmoglein 3	603-810	Mouse	Mouse IgG1	100 ug	IHC	Hu	\$ 299.00
FLAG-Tag (DYKDDDDK)	603-870	Mouse	Mouse IgG1	100 ug	IHC	Hu	\$ 299.00
GLEPP-1	603-900	Mouse	Mouse IgG1	100 ug	IHC	Hu	\$ 299.00
GST	500-7634	Mouse	Mouse IgG1	100 ug	WB, AP	GST	\$ 349.00
hGH	500-3124	Mouse	Mouse IgG1	100 ug	IHC(P)	Hu	\$ 239.00
IRAK4(pT345)	600-560	Mouse	Mouse IgG1	100 ug	WB, ELISA	Hu, Ms	\$ 230.00
Keratin 10/13	500-5884	Mouse	Mouse IgG1	100 ug	IHC-P, IF	Hu, Rt	\$ 199.00
Keratin 14	500-5894	Mouse	Mouse IgG1	100 ug	WB, IHC-P	Hu	\$ 229.00
Keratin 18	500-5914	Mouse	Mouse IgG1	100 ug	WB, IHC-P, IF	Hu	\$ 169.00
Keratin 5/6/18	500-5934	Mouse	Mouse IgG1	100 ug	IHC-P	Hu, Rt	\$ 199.00
Keratin 7	500-5964	Mouse	Mouse IgG1	100 ug	IHC-P	Hu, Ms	\$ 289.00
Keratin 8 (pS431)	500-5974	Mouse	Mouse IgG1	100 ug	WB, IP, IHC-P, IF	Hu,Ms	\$ 290.00
Melan-A/MART-1	603-920	Mouse	Mouse IgG1	100 ug	IHC, WB	Hu	\$ 299.00
Melanosome	603-840	Mouse	Mouse IgG1	100 ug	IHC	Hu	\$ 299.00
Myosin Heavy Chain, Cardiac	603-820	Mouse	Mouse IgG1	100 ug	WB, IHC	Hu, Ms, Rt	\$ 299.00
NAMPT	603-970	Mouse	Mouse IgG2a	100 ug	WB, IHC	Hu, Ms, Rt	\$ 299.00
Neurofilaments (200kDa&68kDa)	500-1984	Mouse	Mouse IgG1	100 ug	IHC(P), WB, IP	Hu, Ms, Rt	\$ 279.00
PAX8	603-910	Mouse	Mouse IgG1	100 ug	IHC, WB	Hu	\$ 299.00
Phosphotyrosin	603-830	Mouse	Mouse IgG1	100 ug	WB, IHC	Hu, Ms, Rt	\$ 299.00
Troponin T	500-3244	Mouse	Mouse IgG	100 ug	IHC(P)	Hu	\$ 239.00
TSH	600-570	Mouse	Mouse IgG1	100 ug	IHC, WB, ELISA	Hu	\$ 220.00
Tumor-Associated Glycoprotein (TAG-72)	603-880	Mouse	Mouse IgG1	100 ug	IHC	Hu	\$ 299.00
Uroplakin-2	603-940	Mouse	Mouse IgG1	100 ug	IHC, WB	Hu	\$ 299.00
Uroplakin-3	603-950	Mouse	Mouse IgG1	100 ug	IHC, WB	Hu	\$ 299.00
Vimentin	603-890	Mouse	Mouse IgG1	100 ug	IHC	Hu	\$ 299.00

## Polyclonal Antibodies

AbboMax continuously provides a large range of polyclonal antibodies to our life science professional world widely. According to the knowledge of protein chemistry and immunogenicity index, we carefully select the host animals, antigen epitope and optimize the immunization schemes to produce high quality of the antibodies. Most of our polyclonal antibodies are produced in rabbits and have been affinity purified to guarantee the batch-to-batch consistency. With the advantage of the large pooled antisera from the continuously immunized animals, we eliminate the possibility of a single atypical antibody predominating and gives minimum batch-to-batch variation. The titer variation between batches of unconjugated polyclonal antibodies is less than 10% according to Biacore measurements. AbboMax unconjugated polyclonal antibodies are generally well-suited for a variety of techniques.

Description	Catalogue	Host	Isotyping	Size	Application	Cross Reactivity	Price
AEg1(C-Term)	630-100	Rabbit	Rabbit IgG	100ug	ELISA, WB	Hu, Ms, Rt	\$ 245.00
ALDH1a1	630-690	Rabbit	Rabbit IgG	100ug	ELISA, WB	Hu, Ms, Rt	\$ 325.00
ARK1C2	620-940	Rabbit	Rabbit IgG	100ug	ELISA, WB, IHC	Hu, Ms, Rt	\$ 295.00
CCZ1	630-160	Rabbit	Rabbit IgG	100ug	ELISA, WB	Hu, Ms	\$ 245.00
CD147/EMMPRIN	500-10534	Rabbit	Rabbit IgG	100 ug	WB	Hu	\$ 349.00
CD3 zeta	500-3054	Rabbit	Rabbit IgG	100 ug	IHC(P), WB, IP	Hu, Ms, Rt	\$ 299.00
CD44	630-640	Rabbit	Rabbit IgG	100ug	ELISA, WB	Hu, Ms, Rt	\$ 325.00
CNPY4	630-320	Rabbit	Rabbit IgG	100ug	WB, IP	Hu, Ms, Rt	\$ 299.00
Connexin 43	500-2744	Rabbit	Rabbit IgG	100 ug	IHC(P), WB, IP	Hu, Ms, Rt	\$ 285.00
CRTC-3	630-410	Rabbit	Rabbit IgG	100ug	ELISA, WB	Hu, Ms, Rt	\$ 325.00
Cytokeratin-19 (CK-19)	602-670	Rabbit	Rabbit IgG	100 ug	ELISA, WB, IP	Hu, Ms, Rt	\$ 299.00
DCLK1	630-630	Rabbit	Rabbit IgG	100ug	ELISA, WB	Hu, Ms, Rt	\$ 325.00
DLL4	630-500	Rabbit	Rabbit IgG	100ug	ELISA, WB	Hu, Ms, Rt	\$ 245.00
Dystrophin	630-170	Rabbit	Rabbit IgG	100ug	ELISA, WB	Hu, Ms	\$ 245.00
ECRG4	630-230	Rabbit	Rabbit IgG	100ug	ELISA, WB, IHC	Hu, Rt, Ms	\$ 245.00
GABA Receptor 1	500-2884	Rabbit	Rabbit IgG	100 ug	IHC(P), WB, IP	Hu, Ms, Rt	\$ 299.00
GluR 2/3	500-3004	Rabbit	Rabbit IgG	100 ug	IHC(P), WB, IP	Hu, Ms, Rt	\$ 289.00
GluR1	500-3064	Rabbit	Rabbit IgG	100 ug	IHC(P), WB	Hu, Ms, Rt	\$ 299.00
GluR4	500-2904	Rabbit	Rabbit IgG	100 ug	IHC(P), WB, IP	Hu, Ms, Rt	\$ 289.00
GluR6/7	500-2934	Rabbit	Rabbit IgG	100 ug	IHC(P), WB, IP	Hu, Ms, Rt	\$ 285.00
GLUT-1	500-2844	Rabbit	Rabbit IgG	100 ug	IHC(P), WB, IF	Hu, Ms, Rt	\$ 279.00
GSK-3alpha	500-2914	Rabbit	Rabbit IgG	100 ug	IHC(P), WB	Hu, Ms, Rt	\$ 349.00
HA (Hemagglutinin)	500-7644	Rabbit	Rabbit IgG	100 ug	WB, IP	HA tag	\$ 220.00
Histone H3 (Citrulline at N-term)	630-180	Rabbit	Rabbit IgG	100ug	ELISA, WB, IHC	Hu, Rt, Ms	\$ 299.00
Histone H3(monomethylated Histidine at H39	630-370	Rabbit	Rabbit IgG	100 ug	ELISA, WB, IP	Hu, Ms, Rt	\$ 355.00
KCNA3	630-520	Rabbit	Rabbit IgG	100ug	ELISA, WB	Hu, Ms, Rt	\$ 245.00
MAF	630-530	Rabbit	Rabbit IgG	100ug	ELISA, WB	Hu, Ms, Rt	\$ 245.00
mGluR1	500-2894	Rabbit	Rabbit IgG	100 ug	IHC(P), WB, IP	Hu, Ms, Rt	\$ 289.00
mGluR5	500-2874	Rabbit	Rabbit IgG	100 ug	IHC(P), WB, IP	Hu, Rt	\$ 289.00
MyoD1	630-700	Rabbit	Rabbit IgG	100ug	ELISA, WB	Hu, Ms, Rt,	\$ 325.00
NAPRT	630-510	Rabbit	Rabbit IgG	100ug	ELISA, WB	Hu, Ms, Rt	\$ 245.00
Neuropilin-2	630-610	Rabbit	Rabbit IgG	100ug	ELISA, WB	Hu, Ms, Rt	\$ 325.00
Nucleophosmin (NPM)	630-560	Rabbit	Rabbit IgG	100ug	ELISA, WB	Hu, Ms, Rt	\$ 325.00
Parkin	630-440	Rabbit	Rabbit IgG	100ug	ELISA, WB	Hu, Ms, Rt	\$ 245.00
PCNA	500-2854	Rabbit	Rabbit IgG	100 ug	IHC(P), WB	Hu	\$ 269.00
PINK1	630-470	Rabbit	Rabbit IgG	100ug	ELISA, WB	Hu, Ms, Rt	\$ 245.00
RESP18	630-310	Rabbit	Rabbit IgG	100ug	WB, IP	Ms, Rt	\$ 299.00
SAND1 (Mona)	630-140	Rabbit	Rabbit IgG	100ug	ELISA, WB	Hu, Ms	\$ 245.00

## Polyclonal Antibodies- Product List Cont.

Description	Catalogue	Host	Isotyping	Size	Application	Cross Reactivity	Price
SAND2 (Mon1b)	630-150	Rabbit	Rabbit IgG	100ug	ELISA, WB	Hu, Ms	\$ 245.00
SCG2 (Secretogranin II)	630-330	Rabbit	Rabbit IgG	100ug	WB, IP	Ms, Rt	\$ 299.00
SERPINC1/AT3(Antithrombin 3)	630-130	Rabbit	Rabbit IgG	100ug	ELISA, WB	Hu, Ms	\$ 245.00
SH3BP5	630-490	Rabbit	Rabbit IgG	100ug	ELISA, WB	Hu, Ms, Rt	\$ 245.00
SirT1	630-650	Rabbit	Rabbit IgG	100ug	ELISA, WB	Hu, Ms, Rt	\$ 325.00
SirT2	630-670	Rabbit	Rabbit IgG	100ug	ELISA, WB	Hu, Ms, Rt	\$ 325.00
SirT3	630-680	Rabbit	Rabbit IgG	100ug	ELISA, WB	Hu, Ms, Rt	\$ 325.00
STK17b/DRAK2	630-360	Rabbit	Rabbit IgG	100 ug	ELISA, WB, IP	Hu, Ms, Rt	\$ 255.00
SUMO-1/Sentrin-1	500-10994	Rabbit	Rabbit IgG	100 ug	WB	Hu	\$ 249.00
SUMO-2/Sentrin-2	500-10504	Rabbit	Rabbit IgG	100 ug	WB	Hu	\$ 249.00
SUMO-3/Sentrin-3	500-10514	Rabbit	Rabbit IgG	100 ug	WB	Hu	\$ 249.00
Synuclein alpha	500-2684	Rabbit	Rabbit IgG	100 ug	IHC(P)	Hu, Rt	\$ 299.00
Torsin-1A(TOR2A)	630-300	Rabbit	Rabbit IgG	100ug	WB, IP	Hu, Ms, Rt	\$ 299.00

## Phosphospecific Antibodies

Cellular decisions rely on intracellular signaling mechanisms that are dependent on the coordinated interaction of many proteins. It is well understood that phosphorylation via kinases plays a crucial role in signaling for many cellular events. Methodologies to investigate cellular signaling mechanisms have routinely relied on preparation of cellular lysates for in vitro biochemical analysis. The generation of phosphorylated state-specific antibodies that distinguish a phosphorylated from a non-phosphorylated form of a protein have greatly expanded the assessment of signaling. This has been standardly employed in immunoblot analysis, immunoprecipitation or fluorescent microscopy. AbboMax provides variety of cell lysates as well as the phosphospecific antibodies to expedite your research.



Description	Catalogue	Host	Isotyping	Size	Application	Cross Reactivity	Price
AEG1(pS568) Androgen Receptor (AR) (pS210)	630-080 602-680	Rabbit	Rabbit IgG	100ug 100 ug	ELISA, WB ELISA, WB, IP	Hu, Ms, Rt Hu, Ms, Rt	\$ 345.00 \$ 355.00
AXL/UFO (Phospho)	620-970	Rabbit	Rabbit IgG	100ug	ELISA, WB	Hu, Ms, Rt	\$ 365.00
BCL-2 (pThr129)	500-8874	Rabbit	Rabbit IgG	100 ug	WB, IP	Hu, Ms, Rt	\$ 245.00
BCL-2(pS70)	500-11574	Rabbit	Rabbit IgG	100 ug	IHC, ELISA	Hu, Ms	\$ 250.00
BCL-2(pT56)	500-11584	Rabbit	Rabbit IgG	100 ug	IHC, ELISA	Hu, Ms	\$ 255.00
CDC2 (pY15) (CDK1)	602-160	Rabbit	Rabbit IgG	100 ug	ELISA, WB, IP	Hu	\$ 315.00
CDC25b(pS42)	601-610	Rabbit	Rabbit IgG	100 ug	Elisa, WB, IHC	Hu	\$ 375.00
CDC25C(pS216)	601-640	Rabbit	Rabbit IgG	100 ug	Elisa, WB, IHC	Hu	\$ 345.00
c-erbB2 (pY1221/Y1222) (HER2)	500-11744	Rabbit	Rabbit IgG	100 ug	IHC, ELISA	Hu, Ms	\$ 225.00
c-erbB2 (pY877) (HER2)	500-11754	Rabbit	Rabbit IgG	100 ug	IHC, ELISA	Hu, Ms	\$ 225.00
C-erbB3/HER3 (pY1283)	602-520	Rabbit	Rabbit IgG	100 ug	ELISA, WB, IP	Hu	\$ 330.00
CK-18 (pS33)	630-110	Rabbit	Rabbit IgG	100ug	ELISA, WB	Hu	\$ 345.00
Crystallin(A-Beta) (pS59)	630-400	Rabbit	Rabbit IgG	100ug	ELISA, WB	Hu, Ms, Rt	\$ 325.00
CSF-1R (pY723)	602-110	Rabbit	Rabbit IgG	100 ug	ELISA, WB, IP	Hu, Ms, Rt	\$ 295.00
DCLK1(pY30)	630-620	Rabbit	Rabbit IgG	100ug	ELISA, WB	Hu, Ms, Rt	\$ 325.00
Desmin (pT76/77)	602-280	Rabbit	Rabbit IgG	100 ug	ELISA, WB, IP	Hu, Ms, Rt	\$ 360.00

## Phosphospecific Antibodies-Product List Cont.

Description	Catalogue	Host	Isotyping	Size	Application	Cross Reactivity	Price
EGFR(pY1092)	500-12224	Rabbit	Rabbit IgG	100 ug	IHC, ELISA	Hu, Ms, Rt	\$ 235.00
ELK-1(pS383)	500-12234	Rabbit	Rabbit IgG	100 ug	IHC, IP ELISA	Hu, Ms, Rt	\$ 245.00
Estragen Receptor (ER) (pS118)	500-12264	Rabbit	Rabbit IgG	100 ug	IHC, WB, ELISA	Hu, Ms	\$ 319.00
GSK-3b (pY216)	602-190	Rabbit	Rabbit IgG	100 ug	ELISA, WB, IP	Hu, Ms, Rt	\$ 299.00
IGF-1R (pY1161)	500-12304	Rabbit	Rabbit IgG	100 ug	IHC, ELISA	Hu, Ms, Rt	\$ 290.00
IRS-1 (pS312)	500-8984	Rabbit	Rabbit IgG	100 ug	WB, IP	Hu, Rt, Ms	\$ 295.00
IRS1(pY612)	601-600	Rabbit	Rabbit IgG	100 ug	Elisa, WB, IHC	Hu, Rt, Ms	\$ 345.00
IRS-2 (pS731)	500-9004	Rabbit	Rabbit IgG	100 ug	WB, IP	Hu, Rt, Ms	\$ 290.00
JNK/SAPK1(pT183/pY185)	600-380	Rabbit	Rabbit IgG	100 ug	WB, ELISA, IP	Hu, Rt	\$ 340.00
L1CAM(pS1152)	630-210	Rabbit	Rabbit IgG	100ug	ELISA, WB, IHC	Hu, Rt, Ms	\$ 245.00
LRRK2(pS1124)	620-950	Rabbit	Rabbit IgG	100ug	ELISA, WB, IHC	Hu, Ms, Rt	\$ 355.00
LRRK2(pS955)	630-250	Rabbit	Rabbit IgG	100ug	ELISA, WB	Hu, Ms, Rt	\$ 325.00
LRRK2(pS973)	630-270	Rabbit	Rabbit IgG	100ug	ELISA, WB	Hu, Ms, Rt	\$ 325.00
LRRK2(pT1491)	630-040	Rabbit	Rabbit IgG	100ug	ELISA, WB	Hu, Ms, Rt	\$ 355.00
LRRK2(pT1503)	630-060	Rabbit	Rabbit IgG	100ug	ELISA, WB	Hu, Ms, Rt	\$ 325.00
Neuropilin-1(pY297)	630-570	Rabbit	Rabbit IgG	100ug	ELISA, WB	Hu, Ms	\$ 325.00
Neuropilin-2(pY39)	630-590	Rabbit	Rabbit IgG	100ug	ELISA, WB	Hu, Ms	\$ 325.00
NFkBp65 (pS276)	500-9064	Rabbit	Rabbit IgG	100 ug	WB, IHC, ELISA, IP	Hu, Ms, Rt	\$ 285.00
NF-κB p65(pS536)	500-11924	Rabbit	Rabbit IgG	100 ug	IHC, ELISA, IP	Hu, Ms	\$ 270.00
NF-κB p65(pT254)	500-11934	Rabbit	Rabbit IgG	100 ug	IHC, WB, ELISA, IP	Hu, Ms	\$ 250.00
Nucleophosmin (NPM) (pS70)	630-540	Rabbit	Rabbit IgG	100ug	ELISA, WB	Hu, Ms, Rt	\$ 325.00
PAK4(pS474)	600-030	Rabbit	Rabbit IgG	100 ug	WB, IP, ELISA	Hu, Ms, Rt	\$ 365.00
Parkin (pS56)	630-420	Rabbit	Rabbit IgG	100ug	ELISA, WB	Hu, Ms, Rt	\$ 325.00
PINK1 (pT257)	630-450	Rabbit	Rabbit IgG	100ug	ELISA, WB	Hu, Ms, Rt	\$ 325.00
Raf-1 (pS259)	500-12014	Rabbit	Rabbit IgG	100 ug	IHC, ELISA	Hu, Ms	\$ 240.00
Raf-A (pS186)	630-390	Rabbit	Rabbit IgG	100ug	ELISA, WB	Hu, Ms, Rt	\$ 325.00
Rel (pS503)	500-12024	Rabbit	Rabbit IgG	100 ug	IHC, ELISA	Hu, Ms	\$ 245.00
Rho Kinase/ROCKII (pT396)	500-9284	Rabbit	Rabbit IgG	100 ug	WB	Hu, Ms, Rt	\$ 295.00
SirT1(pS47)	630-660	Rabbit	Rabbit IgG	100ug	ELISA, WB	Hu, Ms, Rt	\$ 325.00
STAT3 (pS727)	500-12044	Rabbit	Rabbit IgG	100 ug	IHC, WB, ELISA, IP	Hu, Ms, Rt	\$ 240.00
STAT3 (pY705)	500-12054	Rabbit	Rabbit IgG	100 ug	IHC, ELISA, IP	Hu, Ms	\$ 255.00
STAT4(pY693)	500-12064	Rabbit	Rabbit IgG	100 ug	IHC, ELISA, IP	Hu, Ms	\$ 255.00
STAT5 (pY694)	500-9334	Rabbit	Rabbit IgG	100 ug	WB, IP	Hu, Ms, Rt	\$ 255.00
STAT5A (pS780)	500-12074	Rabbit	Rabbit IgG	100 ug	IHC, WB, ELISA, IP	Hu, Ms	\$ 250.00
STAT5A (pY694)	500-12084	Rabbit	Rabbit IgG	100 ug	IHC, WB, ELISA	Hu, Ms	\$ 225.00
STAT6 (pT645)	500-12094	Rabbit	Rabbit IgG	100 ug	IHC, ELISA, IP	Hu, Ms	\$ 245.00
STAT6 (pY641)	500-12104	Rabbit	Rabbit IgG	100 ug	IHC, ELISA, IP	Hu, Ms	\$ 245.00
STK17b(pS11)	630-350	Rabbit	Rabbit IgG	100 ug	ELISA, WB, IP	Hu, Ms, Rt	\$ 245.00
Synuclein Alpha (pS129)	630-240	Rabbit	Rabbit IgG	100ug	ELISA, WB, IHC	Hu, Rt, Ms	\$ 299.00
TGFBR1(Phospho)	620-900	Rabbit	Rabbit IgG	100ug	ELISA, WB, IHC	Hu, Ms, Rt	\$ 299.00
TGFBR1(pS165)	620-910	Rabbit	Rabbit IgG	100ug	ELISA, WB, IHC	Hu, Ms, Rt	\$ 299.00
VASA (pS43)	601-340	Rabbit	Rabbit IgG	100 ug	ELISA, WB, IHC	Hu	\$ 299.00
VEGFR-2 (pY951) (CD309)	602-080	Rabbit	Rabbit IgG	100 ug	ELISA, WB, IP	Hu, Ms, Rt	\$ 299.00