



Rabbit anti GluR4 (Phosphoserine 861) Polyclonal Antibody

Alternative Name(s): SAB; SH3BP-5

Order Information

- **Description:** SH3BP5(pS424)
- **Catalogue:** 631-040
- **Lot:** See label
- **Size:** 100ug/200ul
- **Host:** Rabbit
- **Clone:** nan
- **Application:** IHC(P), WB
- **Cross Reactivity:** Hu, Ms, Rt

ANTIGEN PREPARATION

A synthetic phosphospecific peptide QSST-S*-LESQ

BACKGROUND

SH3BP5, SH3-domain binding protein 5 (BTK-associated) is a encoded protein by the SH3BP5 gene. The expression of SH3BP5 was enhanced in acute myeloid leukemia (AML) cells and was negatively correlated with patients survival. Elevated expression of SH3BP5 was an independent prognostic factor for AML patients. Furthermore, the phosphorylation of SH3BP5-mediated activation of JNK-BAD signaling contributes to the survival of AML cells.

PURIFICATION

The Rabbit IgG is purified by site-modified Epitope Affinity Purification.

FORMULATION

25mM Tris-Buffered Saline (pH7.2-7.8) with 0.01% NaN₃ + antibody stabilizer

SPECIFICITY

This antibody recognizes phosphorylated Serine 424 of mouse SH3NP5 protein (QSSTSLESQ). It does not recognize the non-phosphorylated SH3BP5 or other phosphorylation sites.

STORAGE

The antibodies are stable for 24 months from date of receipt when stored at -20oC to -70oC. The antibodies can be stored at 2oC-8oC for three month without detectable loss of activity. Avoid repeated freezing-thawing cycles.

APPLICATIONS/SUGGESTED WORKING DILUTIONS*

- Western Blot: 0.1-1 µg/ml
- ELISA: 0.01-0.1 µg/ml
- Immunoprecipitation: 2-5 µg/ml
- IHC: 2-10 µg/ml
- Flow cytometry: 5-10 µg/10⁶ cells
- MW (kDa): 47 kDa
- Positive Control: Kidney Tissue
- Cellular Location: Cell Membrane

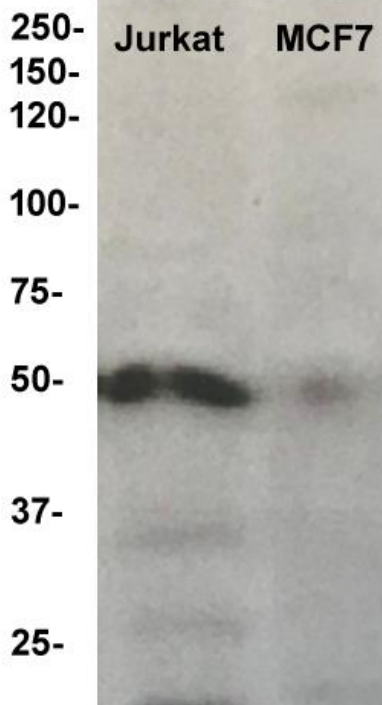
*Optimal dilutions should be determined by researchers for the specific applications.

FOR RESEARCH USE ONLY.

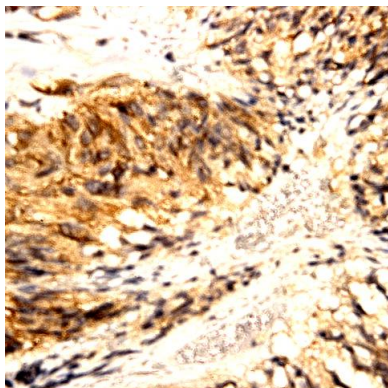
AbboMax, Inc 2528 Qume Drive, Suite 8, San Jose, California 95131, USA
1 408-573-1898 (Tel). 1 408-573-1858 (Fax). www.abbomax.com info@abbomax.com

DATA ATTACHMENTS

MW (kDa)



Western Blot: The cell lysate derived from Jurkat cell line was resolved onto 12% SDS-PAGE and immunoblotted by Rabbit anti SH3BP5 (pS424) (Cat# 631-040) at 1:500. An immunoreactive protein was observed around 50 kDa.



Immunohistochemistry: Human GIST carcinoma (FFPE) stained with Rabbit anti SH3BP5 (pS424) (Cat# 631-040) at 1:200 for 10 min @ RT. Staining of formalin-fixed tissue requires boiling tissue sections in 10 mM Citrate Buffer, pH 6.0 for 10 min followed by cooling at RT for 20 min.

REFERENCES

FOR RESEARCH USE ONLY.