



## Rabbit anti SARS-CoV2(N) polyclonal antibody

Alternative Name(s): nan

### Order Information

- **Description:** SARS-CoV2(N2)
- **Catalogue:** 630-950
- **Lot:** See label
- **Size:** 100ug/200ul
- **Host:** Rabbit
- **Clone:** nan
- **Application:** IHC(P)
- **Reactivity:** Hu, Ms, Rt,

### **ANTIGEN PREPARATION**

A synthetic peptide corresponding to N-terminus of SARS-Cov2-Nucleocapsid Protein

### **BACKGROUND**

SARS-CoV-2, which causes the COVID-19 disease, is a novel coronavirus which results in an acute respiratory syndrome. It is an enveloped positive-sense RNA virus. SARS-CoV-2 contains four structural proteins: E (envelope), M (membrane), S (spike), and N (nucleocapsid) proteins. The N protein holds the RNA genome, and the S, E, and M proteins form the viral envelope. Coronavirus S protein is a large, multifunctional class I viral transmembrane protein. It is required for the entry of the virion particles into the cell through a contact with host cellular receptors. The S-protein of coronavirus consists of S1 and S2 functional units. S1 is responsible for host receptor binding, S2 is in charge of fusion. The nucleocapsid (N) is a 45 kDa protein, one of the major structural proteins of the virus. It binds directly to viral RNA and provides stability. N-protein is involved in the transcription and viral RNA replication, packaging of the genome into helical ribonucleocapsid, and interference with cell cycle processes of host cells.

### **PURIFICATION**

The Rabbit IgG is purified by Epitope Affinity Purification

### **FORMULATION**

This affinity purified antibody is supplied in sterile Phosphatebuffered saline (pH7.2) containing antibody stabilizer

### **SPECIFICITY**

This antibody recognizes SARS-CoV2(N2) N protein.

### **STORAGE**

The antibodies are stable for 24 months from date of receipt when stored at -20oC to -70oC. The antibodies can be stored at 2oC-8oC for three month without detectable loss of activity. Avoid repeated freezing-thawing cycles.

### **APPLICATIONS/SUGGESTED WORKING DILUTIONS\***

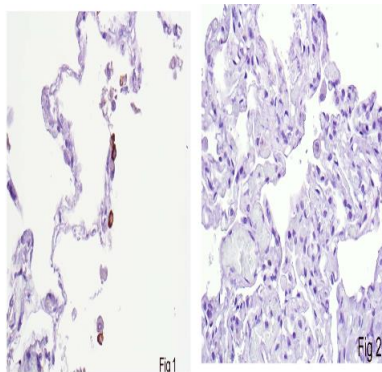
- Western Blot: 0.1-1 µg/ml
- ELISA: 0.01-0.1 µg/ml
- Immunoprecipitation: 2-5 µg/ml
- IHC: 2-10 µg/ml
- Flow cytometry: Not tested
- Molecular Weight: 114.0
- Positive Control: Kidney Tissue
- Cellular Location: Cell Membrane

\*Optimal dilutions should be determined by researchers for the specific applications.

### **FOR RESEARCH USE ONLY.**

AbboMax, Inc 2528 Qume Drive, Suite 8, San Jose, California 95131, USA  
1 408-573-1898 (Tel). 1 408-573-1858 (Fax). [www.abbomax.com](http://www.abbomax.com) [info@abbomax.com](mailto:info@abbomax.com)

## DATA ATTACHMENTS



Immunohistochemistry: Human infected lung tissue (FFPE) stained with Rabbit anti-Sars-Cov2 (N2 protein)(Cat# 630-950) at 1:200 for 10 min @ RT. Staining of formalin-fixed tissue requires boiling tissue sections in 10 mM Citrate Buffer, pH 6.0 for 10 min followed by cooling at RT for 20 min. The infected pneumocytes are positive.

## REFERENCES

### FOR RESEARCH USE ONLY.

AbboMax, Inc 2528 Qume Drive, Suite 8, San Jose, California 95131, USA  
1 408-573-1898 (Tel). 1 408-573-1858 (Fax). [www.abbomax.com](http://www.abbomax.com) [info@abbomax.com](mailto:info@abbomax.com)