



Rabbit anti MARCH8 Polyclonal antibody

Alternative Name(s): nan

Order Information

- **Description:** MARCH8
- **Catalogue:** 630-880
- **Lot:** See label
- **Size:** 100ug/200ul
- **Host:** Rabbit
- **Clone:** nan
- **Application:** IHC(P), WB
- **Reactivity:** Hu, Ms, Rt,

ANTIGEN PREPARATION

A synthetic peptide KV YLQ LWK RLK AYN RVI YVQ N corresponding to the MARCH8 protein. It is identical sequence among human, mice and rat.

BACKGROUND

Membrane-associated RING-CH 8 (MARCH8) is a member of the MARCH family of transmembrane proteins, which function as ubiquitin ligases. It has the RING-CH domain in its N-terminal which faces the cytosol. Its C-terminal contains a six amino acid domain, which is conserved across many species. This protein has a wide range of tissue expression. It is localized to the cell membrane and endosomes.

PURIFICATION

The Rabbit IgG is purified by Epitope Affinity Purification

FORMULATION

This affinity purified antibody is supplied in sterile Phosphatebuffered saline (pH7.2) containing antibody stabilizer

SPECIFICITY

This antibody recognizes human MARCH8 protein. It cross reacts to human, mice and rat.

STORAGE

The antibodies are stable for 24 months from date of receipt when stored at -20oC to -70oC. The antibodies can be stored at 2oC-8oC for three month without detectable loss of activity. Avoid repeated freezing-thawing cycles.

APPLICATIONS/SUGGESTED WORKING DILUTIONS*

- Western Blot: 0.1-1 µg/ml
- ELISA: 0.01-0.1 µg/ml
- Immunoprecipitation: 2-5 µg/ml
- IHC: 2-10 µg/ml
- Flow cytometry: Not tested
- Molecular Weight: 33.0
- Positive Control: Kidney Tissue
- Cellular Location: Cell Membrane

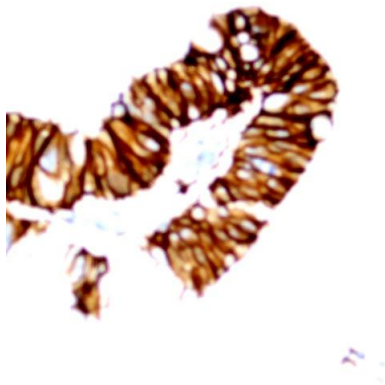
*Optimal dilutions should be determined by researchers for the specific applications.

FOR RESEARCH USE ONLY.

AbboMax, Inc 2528 Qume Drive, Suite 8, San Jose, California 95131, USA
1 408-573-1898 (Tel). 1 408-573-1858 (Fax). www.abbomax.com info@abbomax.com



DATA ATTACHMENTS



Immunohistochemistry: Human colon carcinoma (FFPE) stained with Rabbit anti-MARCH8 antibody (Cat# 630-880) at 1:200 for 10 min @ RT. Staining of formalin-fixed tissue requires boiling tissue sections in 10 mM Citrate Buffer, pH 6.0 for 10 min followed by cooling at RT for 20 min.

REFERENCES

FOR RESEARCH USE ONLY.

AbboMax, Inc 2528 Qume Drive, Suite 8, San Jose, California 95131, USA
1 408-573-1898 (Tel). 1 408-573-1858 (Fax). www.abbomax.com info@abbomax.com