



Rabbit anti TWIST1/2 Polyclonal antibody

Alternative Name(s): twist family bHLH transcription factor 1; CRS; CSO; SCS; ACS3; CRS1; BPES2; BPES3; SWCOS; TWIST; bHLHa38

Order Information

- **Description:** TWIST1/2
- **Catalogue:** 630-770
- **Lot:** See label
- **Size:** 100ug/200ul
- **Host:** Rabbit
- **Clone:** nan
- **Application:** IHC(P), WB
- **Reactivity:** Hu, Ms, Rt,

ANTIGEN PREPARATION

A synthetic peptide RL SYA FSV WRM EGA WSM SAS H corresponding to human TWIST protein.

BACKGROUND

Twist1 is a basic helix-loop-helix (bHLH) transcription factor that plays an important role in embryonic development. This protein forms both homodimers and heterodimers that bind to DNA E box sequences and regulate the transcription of genes. In humans, Twist1 malfunction was linked to Saethre-Chotzen syndrome and later identified to play an essential role in tumor initiation, stemness, angiogenesis, invasion, metastasis, and chemo-resistance in a variety of carcinomas, sarcomas, and hematological malignancies. It is important in the current therapeutic strategies in cancer treatment that target and modulate Twist1-involved signaling pathways. Genetic variants in SNAI1 and TWIST1 are associated with breast and ovarian cancers.

PURIFICATION

The Rabbit IgG is purified by Epitope Affinity Purification

FORMULATION

This affinity purified antibody is supplied in sterile Phosphatebuffered saline (pH7.2) containing antibody stabilizer

SPECIFICITY

This antibody recognizes human TWIST1/2 protein. It cross reacts to human, mice and rat.

STORAGE

The antibodies are stable for 24 months from date of receipt when stored at -20°C to -70°C . The antibodies can be stored at 2°C - 8°C for three month without detectable loss of activity. Avoid repeated freezing-thawing cycles.

APPLICATIONS/SUGGESTED WORKING DILUTIONS*

- Western Blot: 0.1-1 $\mu\text{g/ml}$
- ELISA: 0.01-0.1 $\mu\text{g/ml}$
- Immunoprecipitation: 2-5 $\mu\text{g/ml}$
- IHC: 2-10 $\mu\text{g/ml}$
- Flow cytometry: Not tested
- Molecular Weight: 21.0
- Positive Control: Kidney Tissue
- Cellular Location: Cell Membrane

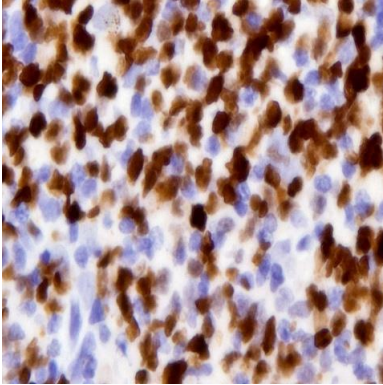
*Optimal dilutions should be determined by researchers for the specific applications.

FOR RESEARCH USE ONLY.

AbboMax, Inc 2528 Qume Drive, Suite 8, San Jose, California 95131, USA
1 408-573-1898 (Tel). 1 408-573-1858 (Fax). www.abbomax.com info@abbomax.com



DATA ATTACHMENTS



Immunohistochemistry: Formalin-Fixed Paraffin-Embedded (FFPE) SKBR3 cell pellet was stained with Rabbit Anti-TWIST antibody (Cat# 630-770) at 1:200 for 10 min @ RT. Staining of formalin-fixed tissue requires boiling tissue sections in 10 mM Citrate Buffer, pH 6.0 for 10 min followed by cooling at RT for 20 min.

REFERENCES

FOR RESEARCH USE ONLY.

AbboMax, Inc 2528 Qume Drive, Suite 8, San Jose, California 95131, USA
1 408-573-1898 (Tel). 1 408-573-1858 (Fax). www.abbomax.com info@abbomax.com