



## Rabbit anti SNAI-3 Polyclonal antibody

Alternative Name(s): nan

### Order Information

- **Description:** SNAI-2
- **Catalogue:** 630-730
- **Lot:** See label
- **Size:** 100ug/200ul
- **Host:** Rabbit
- **Clone:** nan
- **Application:** IHC(P), WB
- **Reactivity:** Hu, Ms, Rt,

### **ANTIGEN PREPARATION**

A synthetic peptide SSH RVP NYG KLE TLR EAN G corresponding to human SNAI-3 protein. It is identical to human, mice and rat.

### **BACKGROUND**

SNAI3 is a member of the Snail family of C2H2-type zinc finger transcription factors. The SNAIL family consists of SNAI1, SNAI2 and SNAI3. In humans, it is expressed in skin melanotic melanoma, lung epidermoid carcinoma, and germ cell tumor. It is composed of a SNAG trans repression domain at the N-terminal end and a C-terminal DNA binding domain with 4 to 5 zinc-fingers. Genetic variants in SNAI and TWIST are associated with breast and ovarian cancers.

### **PURIFICATION**

The Rabbit IgG is purified by Epitope Affinity Purification

### **FORMULATION**

This affinity purified antibody is supplied in sterile Phosphatebuffered saline (pH7.2) containing antibody stabilizer

### **SPECIFICITY**

This antibody recognizes human SNAI-2 protein. It cross reacts to human, mice and rat.

### **STORAGE**

The antibodies are stable for 24 months from date of receipt when stored at -20oC to -70oC. The antibodies can be stored at 2oC-8oC for three month without detectable loss of activity. Avoid repeated freezing-thawing cycles.

### **APPLICATIONS/SUGGESTED WORKING DILUTIONS\***

- Western Blot: 0.1-1 µg/ml
- ELISA: 0.01-0.1 µg/ml
- Immunoprecipitation: 2-5 µg/ml
- IHC: 2-10 µg/ml
- Flow cytometry: Not tested
- Molecular Weight: 32.0
- Positive Control: Kidney Tissue
- Cellular Location: Cell Membrane

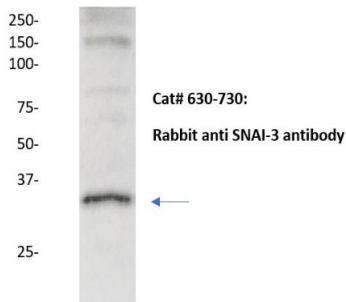
\*Optimal dilutions should be determined by researchers for the specific applications.

### **FOR RESEARCH USE ONLY.**

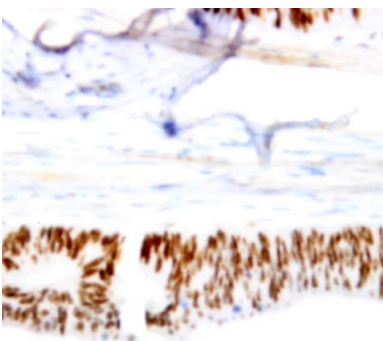
AbboMax, Inc 2528 Qume Drive, Suite 8, San Jose, California 95131, USA  
1 408-573-1898 (Tel). 1 408-573-1858 (Fax). [www.abbomax.com](http://www.abbomax.com) [info@abbomax.com](mailto:info@abbomax.com)

## DATA ATTACHMENTS

MW (kDa)



Western Blot: The whole lysate derived from Hela (20 ug/lane) immunoblotted by Rabbit anti – SNAIL-3 (Cat# 630-730) at 1:500. Observed a major immunoreactive band at molecular weight ~32kDa.



Immunohistochemistry: Human breast carcinoma (FFPE) stained with Rabbit anti-SNAIL-3 antibody (Cat# 630-730) at 1:200 for 10 min @ RT. Staining of formalin-fixed tissue requires boiling tissue sections in 10 mM Citrate Buffer, pH 6.0 for 10 min followed by cooling at RT for 20 min.

## REFERENCES

### FOR RESEARCH USE ONLY.

AbboMax, Inc 2528 Qume Drive, Suite 8, San Jose, California 95131, USA  
1 408-573-1898 (Tel). 1 408-573-1858 (Fax). [www.abbomax.com](http://www.abbomax.com) [info@abbomax.com](mailto:info@abbomax.com)