



Rabbit anti SNAI-1 Polyclonal antibody

Alternative Name(s): nan

Order Information

- **Description:** SNAI-1
- **Catalogue:** 630-710
- **Lot:** See label
- **Size:** 100ug/200ul
- **Host:** Rabbit
- **Clone:** nan
- **Application:** IHC(P), WB
- **Reactivity:** Hu, Ms, Rt,

ANTIGEN PREPARATION

A synthetic peptide EL TSL SDE DSG KGS QPP SPP SP corresponding to human SNAI-1 protein. It is identical to human, mice and rat.

BACKGROUND

Snail (SNAI) is a zinc finger transcriptional repressor which downregulates the expression of ectodermal genes within the mesoderm. This proteins regulate transcription and include the mammalian proteins SLUG, SNAI 1, the human homolog of Drosophila SNAIL, and Smuc. SNAI 1 and SLUG are expressed in placenta and adult heart, liver, and skeletal muscle. SNAI 1, and the corresponding mouse homolog Sna, each contain three classic zinc fingers and one atypical zinc finger. Genetic variants in SNAI and TWIST are associated with breast and ovarian cancers.

PURIFICATION

The Rabbit IgG is purified by Epitope Affinity Purification

FORMULATION

This affinity purified antibody is supplied in sterile Phosphatebuffered saline (pH7.2) containing antibody stabilizer

SPECIFICITY

This antibody recognizes human SNAI-1 protein. It cross reacts to human, mice and rat.

STORAGE

The antibodies are stable for 24 months from date of receipt when stored at -20oC to -70oC. The antibodies can be stored at 2oC-8oC for three month without detectable loss of activity. Avoid repeated freezing-thawing cycles.

APPLICATIONS/SUGGESTED WORKING DILUTIONS*

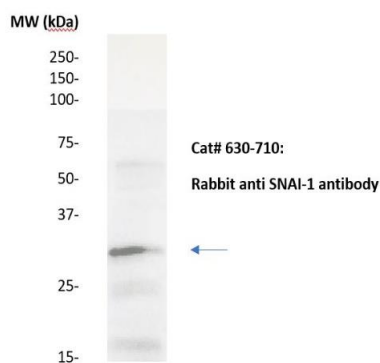
- Western Blot: 0.1-1 µg/ml
- ELISA: 0.01-0.1 µg/ml
- Immunoprecipitation: 2-5 µg/ml
- IHC: 2-10 µg/ml
- Flow cytometry: Not tested
- Molecular Weight: 25-30
- Positive Control: Kidney Tissue
- Cellular Location: Cell Membrane

*Optimal dilutions should be determined by researchers for the specific applications.

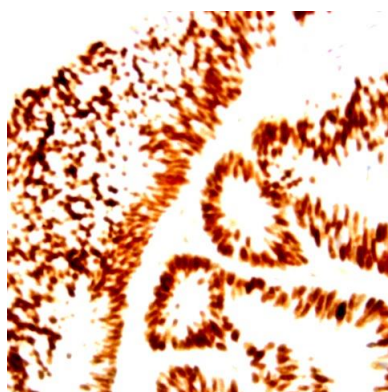
FOR RESEARCH USE ONLY.

AbboMax, Inc 2528 Qume Drive, Suite 8, San Jose, California 95131, USA
1 408-573-1898 (Tel). 1 408-573-1858 (Fax). www.abbomax.com info@abbomax.com

DATA ATTACHMENTS



Western Blot: The whole lysate derived from Hela (20 ug/lane) immunoblotted by Rabbit anti-SNAIL-1 antibody (Cat# 630-710) at 1:500. Observed a major immunoreactive band at molecular weight ~30kDa.



Immunohistochemistry: Human breast carcinoma (FFPE) stained with Rabbit anti-SNAIL-1 antibody (Cat# 630-710) at 1:200 for 10 min @ RT. Staining of formalin-fixed tissue requires boiling tissue sections in 10 mM Citrate Buffer, pH 6.0 for 10 min followed by cooling at RT for 20 min.

REFERENCES

FOR RESEARCH USE ONLY.

AbboMax, Inc 2528 Qume Drive, Suite 8, San Jose, California 95131, USA
1 408-573-1898 (Tel). 1 408-573-1858 (Fax). www.abbomax.com info@abbomax.com