



Rabbit anti Neuropilin-2(pY39) Polyclonal Antibody

Alternative Name(s): nan

Order Information

- **Description:** Neuropilin-2(pY39)
- **Catalogue:** 630-590
- **Lot:** See label
- **Size:** 100ug/200ul
- **Host:** Rabbit
- **Clone:** nan
- **Application:** IHC(P), WB
- **Reactivity:** Hu, Ms, Rt,

ANTIGEN PREPARATION

A synthetic peptide SKDAG-pY*-ITSP corresponding to the phosphorylation site Tyrosine 39 of Neuropilin-2 protein. This sequence is identical to human, mouse, rat.

BACKGROUND

Neuropilin2 (NRP2) is a member of the neuropilin family of receptor proteins. The transmembrane protein binds to SEMA3C protein {sema domain, immunoglobulin domain (Ig), short basic domain, secreted, (semaphorin) 3C} and SEMA3F protein {sema domain, immunoglobulin domain (Ig), short basic domain, secreted, (semaphorin) 3F}, and interacts with vascular endothelial growth factor (VEGF). It may play a role in cardiovascular development, axon guidance, and tumorigenesis. It has also been determined to act as a co-receptor for SARS-CoV-2 (which causes COVID-19) to infect host cells.

PURIFICATION

The Rabbit IgG is purified by Epitope Affinity Purification

FORMULATION

This affinity purified antibody is supplied in sterile Tris-buffered saline (pH7.2) containing antibody stabilizer

SPECIFICITY

This antibody recognizes human Neuropilin-2(pY39) protein with a phosphorylation site Tyrosine 39. It cross reacts to human, mice and rat.

STORAGE

The antibodies are stable for 24 months from date of receipt when stored at -20°C to -70°C . The antibodies can be stored at 2°C - 8°C for three month without detectable loss of activity. Avoid repeated freezing-thawing cycles.

APPLICATIONS/SUGGESTED WORKING DILUTIONS*

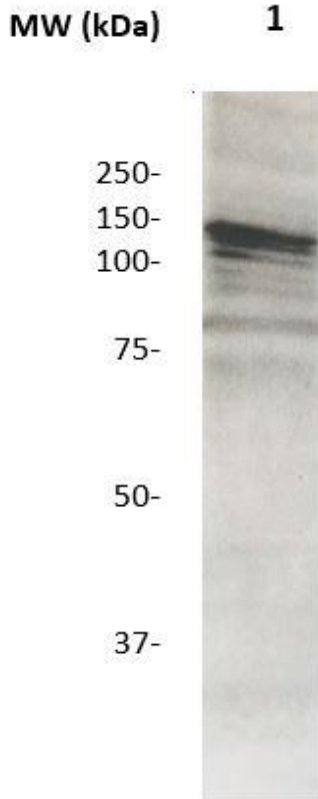
- Western Blot: 0.1-1 $\mu\text{g/ml}$
- ELISA: 0.01-0.1 $\mu\text{g/ml}$
- Immunoprecipitation: 2-5 $\mu\text{g/ml}$
- IHC: 2-10 $\mu\text{g/ml}$
- Flow cytometry: Not tested
- Molecular Weight: 130.0
- Positive Control: Kidney Tissue
- Cellular Location: Cell Membrane

*Optimal dilutions should be determined by researchers for the specific applications.

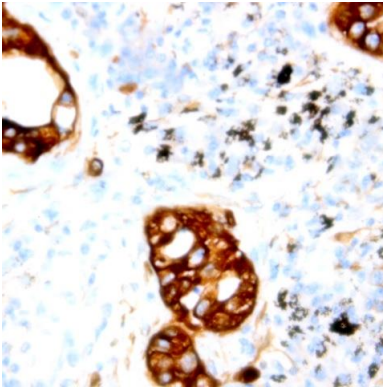
FOR RESEARCH USE ONLY.

AbboMax, Inc 2528 Qume Drive, Suite 8, San Jose, California 95131, USA
1 408-573-1898 (Tel). 1 408-573-1858 (Fax). www.abbomax.com info@abbomax.com

DATA ATTACHMENTS



Western Blot: The whole lysate derived from mouse brain (20 ug/lane) immunoblotted by Rabbit anti – Neuropilin-2 (NRP2) (pY39) (Cat# 630-590) at 1:500. Observed a major immunoreactive band at molecular weight ~120kDa.



Immunohistochemistry: Human carcinoma (FFPE) stained with Rabbit anti-TGF (Cat#) at 1:200 for 10 min @ RT. Staining of formalin-fixed tissue requires boiling tissue sections in 10 mM Citrate Buffer, pH 6.0 for 10 min followed by cooling at RT for 20 min.

REFERENCES

FOR RESEARCH USE ONLY.