



Rabbit anti RESP18 Polyclonal Antibody

Alternative Name(s): Regulated endocrine-specific protein 18

Order Information

- **Description:** RESP18
- **Catalogue:** 630-310
- **Lot:** See label
- **Size:** 100ug/200ul
- **Host:** Rabbit
- **Clone:** nan
- **Application:** IHC(P), WB
- **Reactivity:** Ms, Rt,

ANTIGEN PREPARATION

A synthetic peptides close to C-terminus of mouse RESP18 protein. This sequence is identical among rat and mouse.

BACKGROUND

The regulated endocrine-specific protein 18 (RESP18) is a secreted protein that is expressed mainly in the peripheral endocrine and neuroendocrine tissues in particular the pituitary gland and hypothalamus. It is regulated by physiological factors that include blood glucose and dopaminergic drugs. The encoded protein is found in the lumen of the endoplasmic reticulum and is degraded in the post-ER pre-Golgi compartment. Resp18 may have a functional role in the synthesis or storage of these gastrointestinal peptides.

PURIFICATION

The Rabbit IgG is purified by site-modified Epitope Affinity Purification.

FORMULATION

This affinity purified antibody is supplied in sterile Phosphatebuffered saline (pH7.2) containing antibody stabilizer

SPECIFICITY

This antibody recognizes human RESP18 protein. It cross reacts to human, mice and rat.

STORAGE

The antibodies are stable for 24 months from date of receipt when stored at -20oC to -70oC. The antibodies can be stored at 2oC-8oC for three month without detectable loss of activity. Avoid repeated freezing-thawing cycles.

APPLICATIONS/SUGGESTED WORKING DILUTIONS*

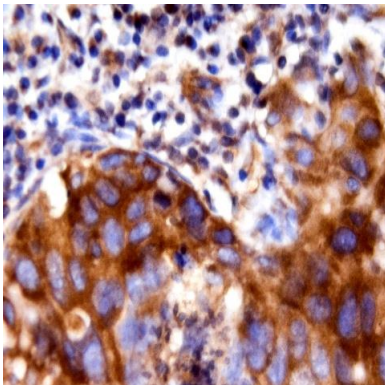
- Western Blot: 0.1-1 µg/ml
- ELISA: 0.01-0.1 µg/ml
- Immunoprecipitation: 2-5 µg/ml
- IHC: 2-10 µg/ml
- Flow cytometry: Not tested
- Molecular Weight: 18.0
- Positive Control: Kidney Tissue
- Cellular Location: Cell Membrane

*Optimal dilutions should be determined by researchers for the specific applications.

FOR RESEARCH USE ONLY.

AbboMax, Inc 2528 Qume Drive, Suite 8, San Jose, California 95131, USA
1 408-573-1898 (Tel). 1 408-573-1858 (Fax). www.abbomax.com info@abbomax.com

DATA ATTACHMENTS



Immunohistochemistry: The Rat stomach tissue (FFPE) stained with Rabbit anti RESP18 antibody (Cat#630-310) at 1:500. (Note: formalin-fixed, paraffin-embedded sections need 15 minutes heat-induced epitope retrieval in 10 mM citrate buffer, pH 6.0, and 30 minutes incubation at room temperature with the primary antibody.

REFERENCES

FOR RESEARCH USE ONLY.

AbboMax, Inc 2528 Qume Drive, Suite 8, San Jose, California 95131, USA
1 408-573-1898 (Tel). 1 408-573-1858 (Fax). www.abbomax.com info@abbomax.com