



Rabbit anti TGFBR1(Non-Phosphospecific) Polyclonal Antibody

Alternative Name(s): Transforming Growth Factor beta Receptor 1 (TGFbR1)

Order Information

- **Description:** TGFBR1(Nonphospho)
- **Catalogue:** 630-290
- **Lot:** See label
- **Size:** 100ug/200ul
- **Host:** Rabbit
- **Clone:** nan
- **Application:** IHC(P), WB
- **Reactivity:** hu, Ms, Rt,

ANTIGEN PREPARATION

This antibody was obtained from the depletion column of the following three Non-Phosphospecific peptides (--YDM-T-T-SGS--; --DMTT-S-G-S-G-S-GLPL--; --EEDP-S-LDRPFI— This sequence is also identical within human, rat, mouse, chicken, bovine.

BACKGROUND

Transforming growth factor β isoforms (TGF- β 1, 2, 3) play vital roles in regulating cellular growth and differentiation, and they signal through a highly restricted subset of receptors known as TGF- β type I receptor (T β R-I) and TGF- β type II receptor (T β R-II). Expression of T beta R-I is more ubiquitous than that of T beta R-II. There was no staining of T beta R-II in the central nervous system, while intense T beta R-I staining was found specifically in nervous tissues. Expression of T beta R-I and T beta R-II was mostly coincident with that of their ligands, suggesting that TGF-beta s act as multiple mediators during organogenesis. TGF- β binds with high affinity to its receptor, a transmembrane protein with a cytoplasmic serine/threonine kinase domain, to form a dynamic dimer with phosphorylation in the cytoplasmic Ser/Thr residuals which cause its kinase activity and association with another TGF beta-binding protein, the type I receptor, to signal growth inhibition and early gene responses.

PURIFICATION

The Rabbit IgG is purified by site-modified Epitope Affinity Purification.

FORMULATION

This affinity purified antibody is supplied in sterile Phosphatebuffered saline (pH7.2) containing antibody stabilizer

SPECIFICITY

This antibody recognizes human TGFBR1(Nonphospho) protein. It cross reacts to human, mice and rat.

STORAGE

The antibodies are stable for 24 months from date of receipt when stored at -20°C to -70°C . The antibodies can be stored at 2°C - 8°C for three month without detectable loss of activity. Avoid repeated freezing-thawing cycles.

APPLICATIONS/SUGGESTED WORKING DILUTIONS*

- Western Blot: 0.1-1 $\mu\text{g}/\text{ml}$
- ELISA: 0.01-0.1 $\mu\text{g}/\text{ml}$
- Immunoprecipitation: 2-5 $\mu\text{g}/\text{ml}$
- IHC: 2-10 $\mu\text{g}/\text{ml}$
- Flow cytometry: Not tested
- Molecular Weight: 55.0
- Positive Control: Kidney Tissue
- Cellular Location: Cell Membrane

FOR RESEARCH USE ONLY.

AbboMax, Inc 2528 Qume Drive, Suite 8, San Jose, California 95131, USA
1 408-573-1898 (Tel). 1 408-573-1858 (Fax). www.abbomax.com info@abbomax.com



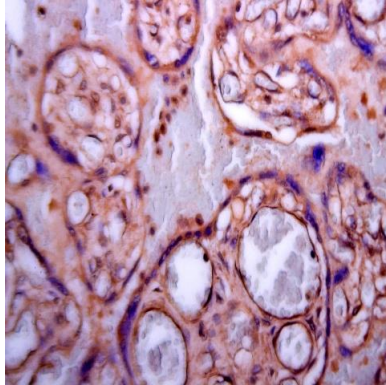
*Optimal dilutions should be determined by researchers for the specific applications.

FOR RESEARCH USE ONLY.

AbboMax, Inc 2528 Qume Drive, Suite 8, San Jose, California 95131, USA
1 408-573-1898 (Tel). 1 408-573-1858 (Fax). www.abbomax.com info@abbomax.com



DATA ATTACHMENTS



Immunohistochemistry: Human placenta (FFPE) stained with Rabbit anti-TGFbR1 (Cat# 630-290) at 1:100 for 10 min @ RT. Staining of formalin-fixed tissue requires boiling tissue sections in 10 mM Citrate Buffer, pH 6.0 for 10 min followed by cooling at RT for 20 min.

REFERENCES

FOR RESEARCH USE ONLY.

AbboMax, Inc 2528 Qume Drive, Suite 8, San Jose, California 95131, USA
1 408-573-1898 (Tel). 1 408-573-1858 (Fax). www.abbomax.com info@abbomax.com