



Rabbit anti ECRG4 Polyclonal Antibody

Alternative Name(s): Esophageal cancer-related gene 4 protein

Order Information

- **Description:** ECRG4
- **Catalogue:** 630-230
- **Lot:** See label
- **Size:** 100ug/200ul
- **Host:** Rabbit
- **Clone:** nan
- **Application:** IHC(P), WB
- **Reactivity:** Hu, Rt, Ms

ANTIGEN PREPARATION

a synthetic peptide GFRH GAS VNY DDY of human ECRG4 protein

BACKGROUND

ECRG4, esophageal cancer-related gene 4, acts as a tumor suppressor gene frequently hypermethylated in human breast cancer. The down-regulation of ECRG4 was highly associated with promoter methylation. ECRG4 overexpression impaired breast cancer cell proliferation and migration, and led to G0/G1 cell cycle phase arrest. Moreover, ECRG4 induced the formation of the Cytc/Apaf-1/caspase-9 apoptosome and promoted breast cancer cell apoptosis. ECRG4 is silenced in human breast cancer cells and cell lines, likely owing to promoter hypermethylation. ECRG4 may act as a tumor suppressor, inhibiting proliferation and migration, inducing G0/G1 phase arrest and apoptosis via the mitochondrial apoptotic pathway.

PURIFICATION

The Rabbit IgG is purified by Epitope Affinity Purification

FORMULATION

This affinity purified antibody is supplied in sterile Phosphatebuffered saline (pH7.2) containing antibody stabilizer

SPECIFICITY

This antibody recognizes human ECRG4 protein. It cross reacts to human, mice and rat.

STORAGE

The antibodies are stable for 24 months from date of receipt when stored at -20oC to -70oC. The antibodies can be stored at 2oC-8oC for three month without detectable loss of activity. Avoid repeated freezing-thawing cycles.

APPLICATIONS/SUGGESTED WORKING DILUTIONS*

- Western Blot: 0.1-1 µg/ml
- ELISA: 0.01-0.1 µg/ml
- Immunoprecipitation: 2-5 µg/ml
- IHC: 2-10 µg/ml
- Flow cytometry: Not tested
- Molecular Weight: 14-18
- Positive Control: Kidney Tissue
- Cellular Location: Cell Membrane

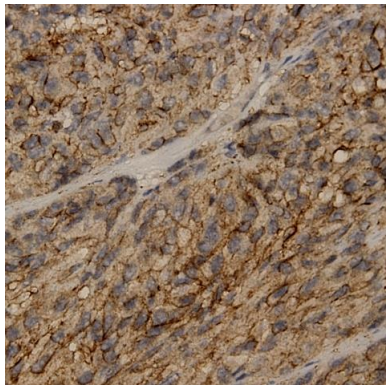
*Optimal dilutions should be determined by researchers for the specific applications.

FOR RESEARCH USE ONLY.

AbboMax, Inc 2528 Qume Drive, Suite 8, San Jose, California 95131, USA
1 408-573-1898 (Tel). 1 408-573-1858 (Fax). www.abbomax.com info@abbomax.com



DATA ATTACHMENTS



Immunohistochemistry: Human GIST carcinoma (FFPE) stained with Rabbit anti-ECRG4 antibody (Cat#630-230) at 1:200 for 10 min @ RT. Staining of formalin-fixed tissue requires boiling tissue sections in 10 mM Citrate Buffer, pH 6.0 for 10 min followed by cooling at RT for 20 min.

REFERENCES

FOR RESEARCH USE ONLY.

AbboMax, Inc 2528 Qume Drive, Suite 8, San Jose, California 95131, USA
1 408-573-1898 (Tel). 1 408-573-1858 (Fax). www.abbomax.com info@abbomax.com