



## **Rabbit anti TIMP-4 Polyclonal Antibody**

**Alternative Name(s): TIMP metalloproteinase inhibitor 4**

### **Order Information**

- **Description:** TIMP-4
- **Catalogue:** 630-190
- **Lot:** See label
- **Size:** 100ug/200ul
- **Host:** Rabbit
- **Clone:** nan
- **Application:** IHC(P), WB
- **Reactivity:** Hu, Rt, Ms, Bv

### **ANTIGEN PREPARATION**

A synthetic peptide corresponding to C-term of human TIMP-4. This sequence is identical among human, rat, mouse, chicken, dog and bovine.

### **BACKGROUND**

Tissue Inhibitors of Metalloproteinases (TIMPs) inhibit the proteolytic invasiveness of tumor cells and normal placental trophoblast cells. TIMPs comprise a family of four members: TIMP1, 2, 3, 4. TIMP-1 and TIMP-2 have similar properties, while TIMP-3 and TIMP-4 are involved inflammation-induced apoptosis and in matrix turnover. TIMP-4 is overexpressed in pilocytic astrocytomas, cardiovascular tissue areas populated by abundant inflammatory cells, human blood derived lymphocytes, monocytes/macrophages and mast cells. The TIMP-4 and its putative partner CD63 are potential markers of the astrocytic phenotype in patients with gliomas.

### **PURIFICATION**

The Rabbit IgG is purified by Epitope Affinity Purification

### **FORMULATION**

This affinity purified antibody is supplied in sterile Phosphatebuffered saline (pH7.2) containing antibody stabilizer

### **SPECIFICITY**

This antibody recognizes ~25 kDa of human TIMP-4 protein. This antibody reacts with human, rat, mouse. The other species are not tested.

### **STORAGE**

The antibodies are stable for 24 months from date of receipt when stored at -20oC to -70oC. The antibodies can be stored at 2oC-8oC for three month without detectable loss of activity. Avoid repeated freezing-thawing cycles.

### **APPLICATIONS/SUGGESTED WORKING DILUTIONS\***

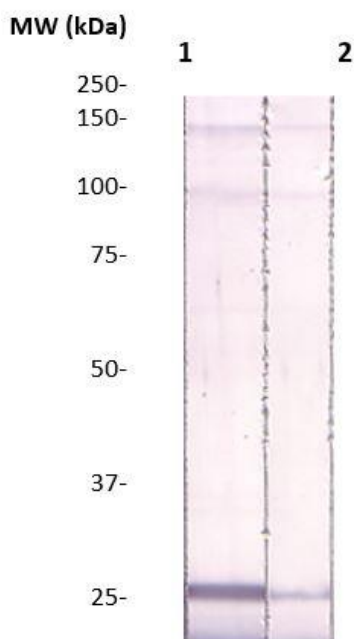
- Western Blot: 0.1-1 µg/ml
- ELISA: 0.01-0.1 µg/ml
- Immunoprecipitation: 2-5 µg/ml
- IHC: 2-10 µg/ml
- Flow cytometry: Not tested
- Molecular Weight: 25.0
- Positive Control: Kidney Tissue
- Cellular Location: Cell Membrane

\*Optimal dilutions should be determined by researchers for the specific applications.

### **FOR RESEARCH USE ONLY.**

AbboMax, Inc 2528 Qume Drive, Suite 8, San Jose, California 95131, USA  
1 408-573-1898 (Tel). 1 408-573-1858 (Fax). [www.abbomax.com](http://www.abbomax.com) [info@abbomax.com](mailto:info@abbomax.com)

## DATA ATTACHMENTS



Western Blot: The cell lysate derived from astrocytoma (SW-1783) was resolved onto 12% SDS-PAGE, transferred onto NC membrane, and immunoprobed by Rabbit anti-TIMP-4 (Cat#630-190) at 1:500. An immunoreactive band is observed around ~25 kDa (1). This band is abolished by pre-incubation with immunizing peptide (2).

## REFERENCES

### FOR RESEARCH USE ONLY.

AbboMax, Inc 2528 Qume Drive, Suite 8, San Jose, California 95131, USA  
1 408-573-1898 (Tel). 1 408-573-1858 (Fax). [www.abbomax.com](http://www.abbomax.com) [info@abbomax.com](mailto:info@abbomax.com)