



Rabbit anti KIF6 Polyclonal Antibody

Alternative Name(s): Kinesin family member 6

Order Information

- **Description:** KIF6
- **Catalogue:** 620-880
- **Lot:** See label
- **Size:** 100ug/200ul
- **Host:** Rabbit
- **Clone:** nan
- **Application:** IHC(P), WB
- **Reactivity:** Hu

ANTIGEN PREPARATION

A synthetic peptide corresponding to internal sequence of human KIF6.

BACKGROUND

KIF6 belongs to the kinesin-like protein family. There are four named isoforms. The KIF6 719Arg polymorphism in the KIF6 gene might be associated with an increased risk of coronary artery disease, thus, the KIF6, together with Apolipoprotein E, lipoprotein (a) could be a genetic marker in clinic diagnosis.

PURIFICATION

The Rabbit IgG is purified by Epitope Affinity Purification

FORMULATION

This affinity purified antibody is supplied in sterile Phosphatebuffered saline (pH7.2) containing antibody stabilizer

SPECIFICITY

This antibody recognizes human/mouse KIF6 protein. The other species are not tested.

STORAGE

The antibodies are stable for 24 months from date of receipt when stored at -20oC to -70oC. The antibodies can be stored at 2oC-8oC for three month without detectable loss of activity. Avoid repeated freezing-thawing cycles.

APPLICATIONS/SUGGESTED WORKING DILUTIONS*

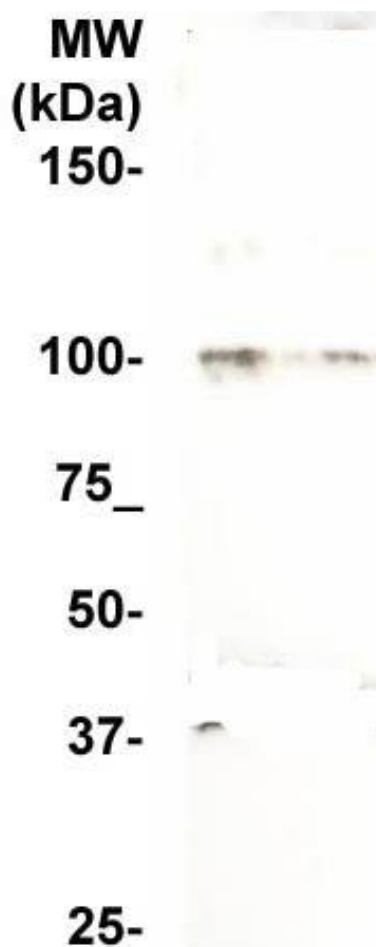
- Western Blot: 0.1-1 µg/ml
- ELISA: 0.01-0.1 µg/ml
- Immunoprecipitation: 2-5 µg/ml
- IHC: 2-10 µg/ml
- Flow cytometry: Not tested
- Molecular Weight: 150.0
- Positive Control: Kidney Tissue
- Cellular Location: Cell Membrane

*Optimal dilutions should be determined by researchers for the specific applications.

FOR RESEARCH USE ONLY.

AbboMax, Inc 2528 Qume Drive, Suite 8, San Jose, California 95131, USA
1 408-573-1898 (Tel). 1 408-573-1858 (Fax). www.abbomax.com info@abbomax.com

DATA ATTACHMENTS



Western Blot: The mouse heart tissue lysate was separated in 10% SDS-PAGE, transferred onto Nitrocellulose membrane, and immunoblotted by Rabbit anti-KIF6 (Cat#620-880) at 1:500. An immune-reactive band is observed at ~90 kDa.

REFERENCES

FOR RESEARCH USE ONLY.

AbboMax, Inc 2528 Qume Drive, Suite 8, San Jose, California 95131, USA
1 408-573-1898 (Tel). 1 408-573-1858 (Fax). www.abbomax.com info@abbomax.com