



Rabbit anti FKR^P Polyclonal Antibody

Alternative Name(s): Fukutin related protein

Order Information

- **Description:** FKR^P
- **Catalogue:** 620-830
- **Lot:** See label
- **Size:** 100ug/200ul
- **Host:** Rabbit
- **Clone:** nan
- **Application:** IHC(P), WB
- **Reactivity:** hu, Ms, Rt,

ANTIGEN PREPARATION

A synthetic peptide corresponding to the C-terminus of human FKR^P protein. This sequence is identical to human, mouse and rat

BACKGROUND

Fukutin-related protein (FKR^P) is targeted to the medial Golgi apparatus and is necessary for posttranslational modification of dystroglycan. Mutations in this gene have been associated with congenital muscular dystrophy, mental retardation, and cerebellar cysts. Mutations in fukutin-related protein (FKR^P) give rise to mild and more severe forms of muscular dystrophy. FKR^P may influence the glycosylation status of dystroglycan from within the sarcolemmal dystrophin-glycoprotein complex. FKR^P associates with the sarcolemmal DGC and that it plays a unique role in dystroglycanopathy muscle disease.

PURIFICATION

The Rabbit IgG is purified by Epitope Affinity Purification

FORMULATION

This affinity purified antibody is supplied in sterile Phosphatebuffered saline (pH7.2) containing antibody stabilizer

SPECIFICITY

This antibody recognizes ~56 kDa of FKR^P protein. This antibody reacts with human, mouse and rat. The other species are not tested.

STORAGE

The antibodies are stable for 24 months from date of receipt when stored at -20oC to -70oC. The antibodies can be stored at 2oC-8oC for three month without detectable loss of activity. Avoid repeated freezing-thawing cycles.

APPLICATIONS/SUGGESTED WORKING DILUTIONS*

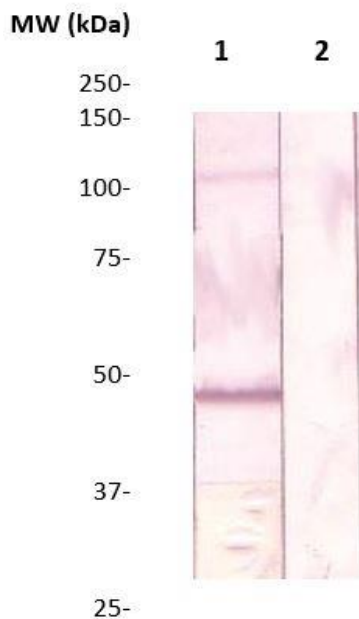
- Western Blot: 0.1-1 µg/ml
- ELISA: 0.01-0.1 µg/ml
- Immunoprecipitation: 2-5 µg/ml
- IHC: 2-10 µg/ml
- Flow cytometry: Not tested
- Molecular Weight: 42.0
- Positive Control: Kidney Tissue
- Cellular Location: Cell Membrane

*Optimal dilutions should be determined by researchers for the specific applications.

FOR RESEARCH USE ONLY.

AbboMax, Inc 2528 Qume Drive, Suite 8, San Jose, California 95131, USA
1 408-573-1898 (Tel). 1 408-573-1858 (Fax). www.abbomax.com info@abbomax.com

DATA ATTACHMENTS



Western Blot: The whole mouse muscle tissue lysates were immunoblotted by Rabbit anti-FKRP (Cat#620-830) at 1:500 (Lane 1). The immunoreactive band is blocked by pre-incubation of immunizing peptide (lane 2). Observed a major immunoreactive band at molecular weight ~42 kDa.

REFERENCES

FOR RESEARCH USE ONLY.

AbboMax, Inc 2528 Qume Drive, Suite 8, San Jose, California 95131, USA
1 408-573-1898 (Tel). 1 408-573-1858 (Fax). www.abbomax.com info@abbomax.com