



Rabbit anti ZBTB4-NT Polyclonal Antibody

Alternative Name(s): zinc finger and BTB domain containing 4

Order Information

- **Description:** ZBTB4-NT
- **Catalogue:** 620-800
- **Lot:** See label
- **Size:** 100ug/200ul
- **Host:** Rabbit
- **Clone:** nan
- **Application:** IHC(P), WB
- **Reactivity:** Hu, Ms, Rt, Bv

ANTIGEN PREPARATION

A synthetic peptide corresponding to the N-terminus of human ZBTB4 protein. This sequence is identical to human, mouse, rat, bovine, canis etc.

BACKGROUND

Zink finger and BTB domain coating 4 (ZBTB4) is a transcriptional repressor protein, which is associated with the Sin3/histone deacetylase co-repressor and represses expression of P21CIP1 as part of a heterodimeric complex with Miz1. In vivo, expression of ZBTB4 is downregulated in advanced stages of multiple human tumours. In cell culture, depletion of ZBTB4 promotes cell cycle arrest in response to activation of p53 and suppresses apoptosis through regulation of P21CIP1, thereby promoting long-term cell survival. ZBTB4 is a critical determinant of the cellular response to p53 activation and reinforce the notion that p21Cip1 can provide an essential survival signal in cells with activated p53.

PURIFICATION

The Rabbit IgG is purified by Epitope Affinity Purification

FORMULATION

This affinity purified antibody is supplied in sterile Phosphatebuffered saline (pH7.2) containing antibody stabilizer

SPECIFICITY

This antibody recognizes ~105 kDa of ZBTB4 protein. This antibody reacts with human, mouse and rat. The other species are not tested.

STORAGE

The antibodies are stable for 24 months from date of receipt when stored at -20oC to -70oC. The antibodies can be stored at 2oC-8oC for three month without detectable loss of activity. Avoid repeated freezing-thawing cycles.

APPLICATIONS/SUGGESTED WORKING DILUTIONS*

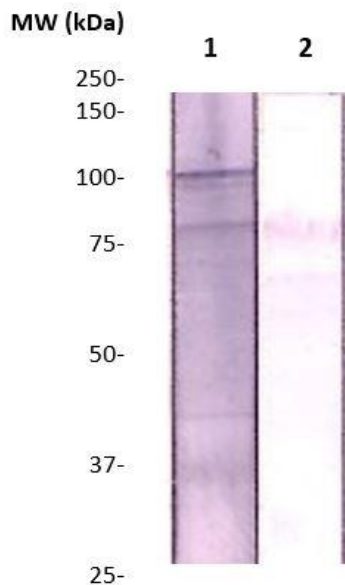
- Western Blot: 0.1-1 µg/ml
- ELISA: 0.01-0.1 µg/ml
- Immunoprecipitation: 2-5 µg/ml
- IHC: 2-10 µg/ml
- Flow cytometry: Not tested
- Molecular Weight: 105.0
- Positive Control: Kidney Tissue
- Cellular Location: Cell Membrane

*Optimal dilutions should be determined by researchers for the specific applications.

FOR RESEARCH USE ONLY.

AbboMax, Inc 2528 Qume Drive, Suite 8, San Jose, California 95131, USA
1 408-573-1898 (Tel). 1 408-573-1858 (Fax). www.abbomax.com info@abbomax.com

DATA ATTACHMENTS



Western Blot: The whole mouse brain tissue lysates were immunoblotted by Rabbit anti-ZBTB4 (Cat#620-800) at 1:500 (Lane 1). The immunoreactive band is blocked by pre-incubation of immunizing peptide (lane 2). Observed a major immunoreactive band at molecular weight ~105kDa.

REFERENCES

FOR RESEARCH USE ONLY.

AbboMax, Inc 2528 Qume Drive, Suite 8, San Jose, California 95131, USA
1 408-573-1898 (Tel). 1 408-573-1858 (Fax). www.abbomax.com info@abbomax.com