



Rabbit anti p15INK4b Polyclonal Antibody

Alternative Name(s): Cyclin-dependent kinase inhibitor 2B; CDKN2B; P15; P15INK4b

Order Information

- **Description:** p15INK4b
- **Catalogue:** 620-540
- **Lot:** See label
- **Size:** 100ug/200ul
- **Host:** Rabbit
- **Clone:** nan
- **Application:** IHC(P), WB
- **Reactivity:** Hu, Ms, Rt

ANTIGEN PREPARATION

A synthetic peptide corresponding to the C-terminus of Mouse p15INK4b. This sequence is identical to human, rat and mouse.

BACKGROUND

Cyclin-dependent kinases (CDKs) are activated in part by forming complexes with cyclins. For example, CDK4 and CDK6 associate with the D-type cyclins and phosphorylate the retinoblastoma protein. This phosphorylation is a necessary event for cells to enter S-phase. The inhibitors of CDK4 (INK4) family include p15 INK4B, p16 INK4A, p18 INK4C and p19 INK4D. p18 has been shown to function as a p16/p19 insufficient tumor suppressor in vivo. All INK4 proteins are composed of 32 amino acid ankyrin motifs and selectively inhibit CDK4/6 activity. Mutational analyses of p18 implicate the third and the amino-terminal portion of the fourth ankyrin repeat in mediating binding to CDK4/6. The interaction of INK4 family members can be a binary complex with CDK4/6 or ternary complex with cyclin D-bound CDK4/6 and ultimately results in the inhibition of cell cycle progression. The gene encoding p15 INK4B is often silenced by hypermethylation in acute myeloid leukemia and deleted in acute lymphocytic leukemia.

PURIFICATION

The Rabbit IgG is purified by Epitope Affinity Purification

FORMULATION

This affinity purified antibody is supplied in sterile Phosphatebuffered saline (pH7.2) containing antibody stabilizer

SPECIFICITY

This antibody recognizes human p15INK4b protein. The other species are not tested.

STORAGE

The antibodies are stable for 24 months from date of receipt when stored at -20oC to -70oC. The antibodies can be stored at 2oC-8oC for three month without detectable loss of activity. Avoid repeated freezing-thawing cycles.

APPLICATIONS/SUGGESTED WORKING DILUTIONS*

- Western Blot: 0.1-1 µg/ml
- ELISA: 0.01-0.1 µg/ml
- Immunoprecipitation: 2-5 µg/ml
- IHC: 2-10 µg/ml
- Flow cytometry: Not tested
- Molecular Weight: 15.0
- Positive Control: Kidney Tissue
- Cellular Location: Cell Membrane

*Optimal dilutions should be determined by researchers for the specific applications.

FOR RESEARCH USE ONLY.

AbboMax, Inc 2528 Qume Drive, Suite 8, San Jose, California 95131, USA
1 408-573-1898 (Tel). 1 408-573-1858 (Fax). www.abbomax.com info@abbomax.com

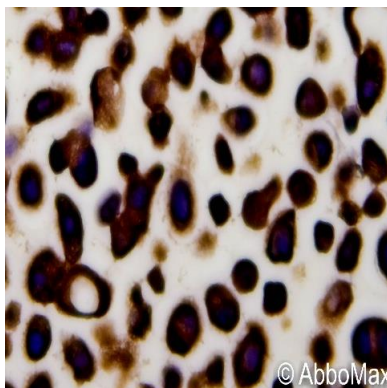


FOR RESEARCH USE ONLY.

AbboMax, Inc 2528 Qume Drive, Suite 8, San Jose, California 95131, USA
1 408-573-1898 (Tel). 1 408-573-1858 (Fax). www.abbomax.com info@abbomax.com



DATA ATTACHMENTS



Immunohistochemistry: The whole cell pellet 3T3 (FFPE) stained with Rabbit anti-p15/INK4b (Cat# 620-540) at 1:200 for 10 min @ RT. Staining of formalin-fixed tissue requires boiling tissue sections in 10 mM Citrate Buffer, pH 6.0 for 10 min followed by cooling at RT for 20 min.

REFERENCES

FOR RESEARCH USE ONLY.

AbboMax, Inc 2528 Qume Drive, Suite 8, San Jose, California 95131, USA
1 408-573-1898 (Tel). 1 408-573-1858 (Fax). www.abbomax.com info@abbomax.com