



Rabbit anti SSEA1(CD15) Polyclonal Antibody

Alternative Name(s): fucosyltransferase 4 (alpha (1,3) fucosyltransferase, myeloid-specific); SSEA-1; CD15; FUT4

Order Information

- **Description:** SSEA1(CD15)
- **Catalogue:** 620-470
- **Lot:** See label
- **Size:** 100ug/200ul
- **Host:** Rabbit
- **Clone:** nan
- **Application:** IHC(P), WB
- **Reactivity:** Hu

ANTIGEN PREPARATION

The Synthetic peptide corresponding to the C-term of human SSEA1 protein.

BACKGROUND

CD15 is an antigen present on myelomonocytic cells and Lacto-Nfucopentose III (also known as hapten X). It is present on greater than 90% of granulocytes including neutrophils and eosinophils, and to a lesser degree, on monocytes. CD15 is expressed in Reed-Sternberg cells of Hodgkin's disease (of the nodular sclerosis, mixed cellularity and lymphocyte-depleted subtypes). This antibody recognizes myeloid cells, mainly granulocytes but not on B cells, T cells, monocytes, erythrocytes or platelets. Positive staining for CD15 combined with a negative reaction for lymphocytic markers may provide support for Hodgkin's disease. Fifty percent or more of adenocarcinomas have been described as showing significant cytoplasmic positivity for CD15. It does not detect most mesotheliomas.

PURIFICATION

The Rabbit IgG is purified by Epitope Affinity Purification

FORMULATION

This affinity purified antibody is supplied in sterile Phosphatebuffered saline (pH7.2) containing antibody stabilizer

SPECIFICITY

This antibody recognizes human CD15 protein. The other species are not tested.

STORAGE

The antibodies are stable for 24 months from date of receipt when stored at -20oC to -70oC. The antibodies can be stored at 2oC-8oC for three month without detectable loss of activity. Avoid repeated freezing-thawing cycles.

APPLICATIONS/SUGGESTED WORKING DILUTIONS*

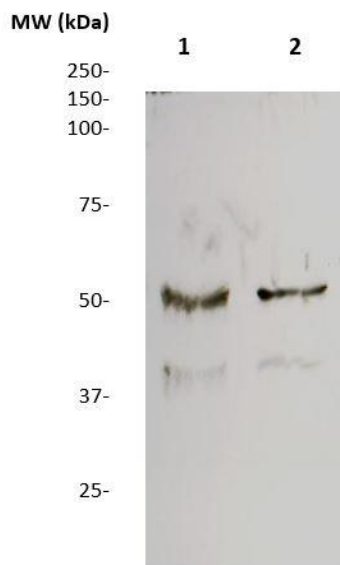
- Western Blot: 0.1-1 µg/ml
- ELISA: 0.01-0.1 µg/ml
- Immunoprecipitation: 2-5 µg/ml
- IHC: 2-10 µg/ml
- Flow cytometry: Not tested
- Molecular Weight: >200
- Positive Control: Kidney Tissue
- Cellular Location: Cell Membrane

*Optimal dilutions should be determined by researchers for the specific applications.

FOR RESEARCH USE ONLY.

AbboMax, Inc 2528 Qume Drive, Suite 8, San Jose, California 95131, USA
1 408-573-1898 (Tel). 1 408-573-1858 (Fax). www.abbomax.com info@abbomax.com

DATA ATTACHMENTS



Western Blot: The whole cell lysate derived from HL60 and K560 (Lane 1 and 2 respectively) were separated in 10% SDS-PAGE, transferred onto NC membrane, and immunoblotted by Rabbit anti – CD15 (Cat#620-470) antibody at 1:500 . An immunoreactive band around ~59 kDa is observed.

REFERENCES

FOR RESEARCH USE ONLY.

AbboMax, Inc 2528 Qume Drive, Suite 8, San Jose, California 95131, USA
1 408-573-1898 (Tel). 1 408-573-1858 (Fax). www.abbomax.com info@abbomax.com