



Rabbit anti Neurofibromin Polyclonal Antibody

Alternative Name(s): NF1 neurofibromin 1

Order Information

- **Description:** Neurofibromin
- **Catalogue:** 620-260
- **Lot:** See label
- **Size:** 100ug/200ul
- **Host:** Rabbit
- **Clone:** nan
- **Application:** IHC(P), WB
- **Reactivity:** Hu

ANTIGEN PREPARATION

A synthetic peptide corresponding to the C terminus of human neurofibromin. This sequence is identical among human, rat, mouse, chicken, bovine and dog.

BACKGROUND

The neurofibromatosis type 1 (NF1) tumor suppressor (neurofibromin) is thought to play crucial roles in cellular Ras- and cAMP-dependent kinase (PKA)-associated signals. The absence of or alteration of the neurofibromin protein may lead to neurofibromatosis disease. Recently, a cellular neurofibromin-associating protein, NG,NG-dimethylarginine dimethylaminohydrolase (DDAH) has been identified as a cellular NO/NOS regulator which increases PKA phosphorylation of native neurofibromin in a dose-dependent manner. The PKA accessibility of neurofibromin regulated via DDAH interaction may modulate the cellular function of neurofibromin that is implicated in NF1-related pathogenesis.

PURIFICATION

The Rabbit IgG is purified by Epitope Affinity Purification

FORMULATION

This affinity purified antibody is supplied in sterile Phosphatebuffered saline (pH7.2) containing antibody stabilizer

SPECIFICITY

This antibody recognizes ~240 kDa of human neurofibromin protein. This antibody also reacts with mouse, rat, chicken, bovine and dog. The other species are not tested.

STORAGE

The antibodies are stable for 24 months from date of receipt when stored at -20oC to -70oC. The antibodies can be stored at 2oC-8oC for three month without detectable loss of activity. Avoid repeated freezing-thawing cycles.

APPLICATIONS/SUGGESTED WORKING DILUTIONS*

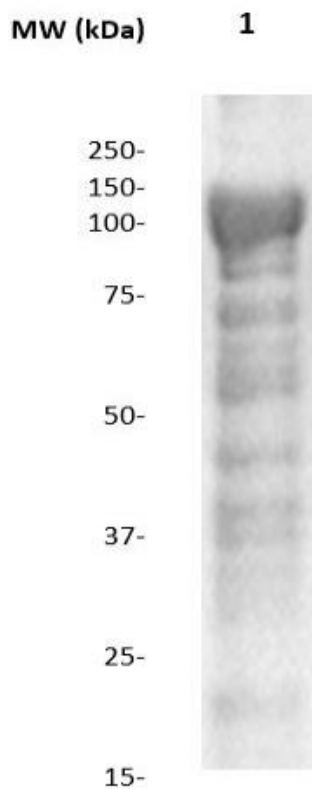
- Western Blot: 0.1-1 µg/ml
- ELISA: 0.01-0.1 µg/ml
- Immunoprecipitation: 2-5 µg/ml
- IHC: 2-10 µg/ml
- Flow cytometry: Not tested
- Molecular Weight: 240.0
- Positive Control: Kidney Tissue
- Cellular Location: Cell Membrane

*Optimal dilutions should be determined by researchers for the specific applications.

FOR RESEARCH USE ONLY.

AbboMax, Inc 2528 Qume Drive, Suite 8, San Jose, California 95131, USA
1 408-573-1898 (Tel). 1 408-573-1858 (Fax). www.abbomax.com info@abbomax.com

DATA ATTACHMENTS



Western Blot: The whole tissue lysates derived from mouse brain immunoblotted by Rabbit anti-Neurofibromin antibody (Cat#620-260) at 1:1000. Observed a major immunoreactive band at molecular weight ~240kDa.

REFERENCES

FOR RESEARCH USE ONLY.