



Rabbit anti Neurofibromin(pS2741) Polyclonal Antibody

Alternative Name(s): NF1 neurofibromin 1

Order Information

- **Description:** Neurofibromin(pS2741)
- **Catalogue:** 620-240
- **Lot:** See label
- **Size:** 100ug/200ul
- **Host:** Rabbit
- **Clone:** nan
- **Application:** IHC(P), WB
- **Reactivity:** Hu

ANTIGEN PREPARATION

A synthetic peptide surrounding the epitope –PTSPY- with a phosphorylation site of Ser2741 of human neurofibromin. This sequence is identical among human, rat, mouse, chicken, bovine and dog

BACKGROUND

The neurofibromatosis type 1 (NF1) tumor suppressor (neurofibromin) is thought to play crucial roles in cellular Ras- and cAMP-dependent kinase (PKA)-associated signals. The absence of or alteration of the neurofibromin protein may lead to neurofibromatosis disease. Recently, a cellular neurofibromin-associating protein, NG,NG-dimethylarginine dimethylaminohydrolase (DDAH) has been identified as a cellular NO/NOS regulator which increases PKA phosphorylation of native neurofibromin in a dose-dependent manner. The PKA accessibility of neurofibromin regulated via DDAH interaction may modulate the cellular function of neurofibromin that is implicated in NF1-related pathogenesis.

PURIFICATION

The Rabbit IgG is purified by site-modified Epitope Affinity Purification.

FORMULATION

This affinity purified antibody is supplied in sterile Tris-buffered saline (pH7.2) containing antibody stabilizer

SPECIFICITY

This antibody recognizes ~240 kDa of human neurofibromin protein at the phosphorylation site of Ser 2741. It does not cross react to non-phospho NF1. This antibody also reacts with mouse, rat, chicken, bovine and dog. The other species are not tested.

STORAGE

The antibodies are stable for 24 months from date of receipt when stored at –20oC to –70oC. The antibodies can be stored at 2oC-8oC for three month without detectable loss of activity. Avoid repeated freezing-thawing cycles.

APPLICATIONS/SUGGESTED WORKING DILUTIONS*

- Western Blot: 0.1-1 µg/ml
- ELISA: 0.01-0.1 µg/ml
- Immunoprecipitation: 2-5 µg/ml
- IHC: 2-10 µg/ml
- Flow cytometry: Not tested
- Molecular Weight: 240.0
- Positive Control: Kidney Tissue
- Cellular Location: Cell Membrane

*Optimal dilutions should be determined by researchers for the specific applications.

FOR RESEARCH USE ONLY.

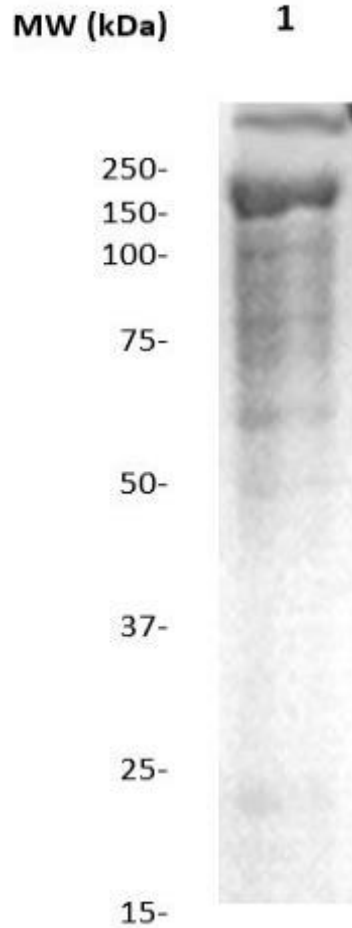
AbboMax, Inc 2528 Qume Drive, Suite 8, San Jose, California 95131, USA
1 408-573-1898 (Tel). 1 408-573-1858 (Fax). www.abbomax.com info@abbomax.com



FOR RESEARCH USE ONLY.

AbboMax, Inc 2528 Qume Drive, Suite 8, San Jose, California 95131, USA
1 408-573-1898 (Tel). 1 408-573-1858 (Fax). www.abbomax.com info@abbomax.com

DATA ATTACHMENTS



Western Blot: The whole tissue lysates derived from hypoxic mouse brain immunoblotted by Rabbit anti-Neurofibromin (pS2741) antibody (Cat#620-240) at 1:1000. Observed a major immunoreactive band at molecular weight ~240 kDa.

REFERENCES

FOR RESEARCH USE ONLY.