



Rabbit anti Myc-Tag Polyclonal Antibody

Alternative Name(s): EQKLISEEDL

Order Information

- **Description:** Myc-Tag
- **Catalogue:** 610-010
- **Lot:** See label
- **Size:** 100ug/200ul
- **Host:** Rabbit
- **Clone:** nan
- **Application:** WB
- **Reactivity:** Myc-Tag

ANTIGEN PREPARATION

A synthetic peptide of EQKLISEEDL conjugated to a carrier protein.

BACKGROUND

Many oligo peptides or tag proteins are widely used as a tag to monitor the protein expression, such as FLAG, c-Myc, E-tag, His-tag, GFP, GST, and etc. These tag antibodies provide tools to localize gene products in a variety of cell types to study the topology of proteins, and protein complexes, and to identify associated proteins. In addition, this antibody allows characterizing of newly identified, lowing abundance or poorly immunogenic proteins when protein specific antibodies are not available. The c-Myc tag antibody is generated according to the 10 amino acid epitope tag (EQKLISEEDL), and it can be used to detect the c-Myc tagged fusion proteins.

PURIFICATION

The Rabbit IgG is purified by Epitope Affinity Purification

FORMULATION

This affinity purified antibody is supplied in sterile Phosphatebuffered saline (pH7.2) containing antibody stabilizer

SPECIFICITY

This antibody recognizes c-Myc tagged fusion proteins. It is a tag antibody.

STORAGE

The antibodies are stable for 24 months from date of receipt when stored at -20oC to -70oC. The antibodies can be stored at 2oC-8oC for three month without detectable loss of activity. Avoid repeated freezing-thawing cycles.

APPLICATIONS/SUGGESTED WORKING DILUTIONS*

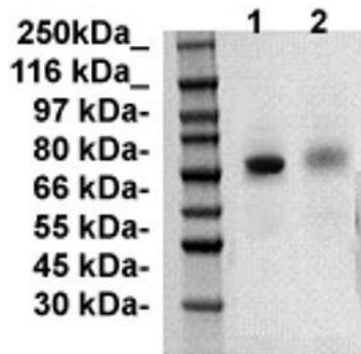
- Western Blot: 0.1-1 µg/ml
- ELISA: 0.01-0.1 µg/ml
- Immunoprecipitation: 2-5 µg/ml
- IHC: 2-10 µg/ml
- Flow cytometry: Not tested
- Molecular Weight: nan
- Positive Control: Kidney Tissue
- Cellular Location: Cell Membrane

*Optimal dilutions should be determined by researchers for the specific applications.

FOR RESEARCH USE ONLY.

AbboMax, Inc 2528 Qume Drive, Suite 8, San Jose, California 95131, USA
1 408-573-1898 (Tel). 1 408-573-1858 (Fax). www.abbomax.com info@abbomax.com

DATA ATTACHMENTS



Western Blot: c-Myc-tagged recombinant protein (lane 1: 10 ug/lane; Lane 2: 5 ug/lane) immunoblotted by Rabbit anti c-Myc tagged antibody (Cat# 610-010) at 1:1000. The immunoreactive band was corresponding to the tagged protein.

REFERENCES

FOR RESEARCH USE ONLY.