



## Mouse anti CD206 Monoclonal Antibody

Alternative Name(s): MMR (macrophage mannose receptor), MR (mannose receptor), CD206, MRC1

### Order Information

- **Description:** CD206
- **Catalogue:** 606-720
- **Lot:** See label
- **Size:** 100ug/200ul
- **Host:** Mouse
- **Clone:** MMR
- **Application:** FC
- **Cross Reactivity:** Hu

### **ANTIGEN PREPARATION**

Recombinant protein of human CD206

### **BACKGROUND**

CD206, also known as Macrophage Mannose Receptor (MMR) or mannose receptor (MR), is a 162-175 kD type I membrane protein that mediates the endocytosis of glycoproteins by macrophages. The protein has been shown to bind high-mannose structures on the surface of potentially pathogenic viruses, bacteria, and fungi so that they can be neutralized by phagocytic engulfment. CD206 is expressed on macrophages, dendritic cells, and hepatic or lymphatic endothelial cells, but not on monocytes. CD206 recognizes a range of microbial carbohydrates bearing mannose, fucose, or N-acetyl glucosamine. It plays an important role in host defense, and provides a link between innate and adaptive immunity

### **PURIFICATION**

The mouse IgG is purified by Protein A-Affinity Chromatography according to Isotyping

### **FORMULATION**

0.01M Phosphate-Buffered Saline (pH7.2-7.4) with 0.01% NaN<sub>3</sub> + antibody stabilizer

### **SPECIFICITY**

This antibody recognizes human CD206. The other species are not tested.

### **STORAGE**

The antibodies are stable for 24 months from date of receipt when stored at -20°C to -70°C. The antibodies can be stored at 2°C-8°C for three months without detectable loss of activity. Avoid repeated freezing-thawing cycles.

### **APPLICATIONS/SUGGESTED WORKING DILUTIONS\***

- Western Blot: 0.1-1 µg/ml
- ELISA: 0.01-0.1 µg/ml
- Immunoprecipitation: 2-5 µg/ml
- IHC: 2-10 µg/ml
- Flow cytometry: 5-10 µg/10<sup>6</sup> cells
- MW (kDa): 170 kDa
- Positive Control: Kidney Tissue
- Cellular Location: Cell Membrane

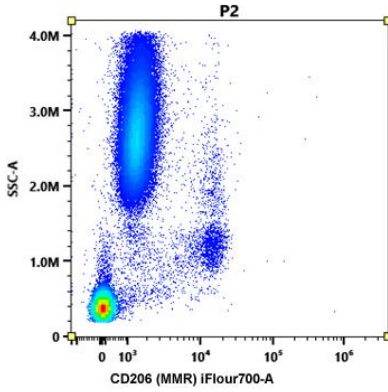
\*Optimal dilutions should be determined by researchers for the specific applications.

### **FOR RESEARCH USE ONLY.**

AbboMax, Inc 2528 Qume Drive, Suite 8, San Jose, California 95131, USA  
1 408-573-1898 (Tel). 1 408-573-1858 (Fax). [www.abbomax.com](http://www.abbomax.com) [info@abbomax.com](mailto:info@abbomax.com)



**DATA ATTACHMENTS**



Flow Cytometry: Human PBMC (100 ul) stained with fluorescence labeled mouse anti CD206 (Cat# 606-720) (5 ul) for 20 min @ RT

**REFERENCES**

**FOR RESEARCH USE ONLY.**

AbboMax, Inc 2528 Qume Drive, Suite 8, San Jose, California 95131, USA  
1 408-573-1898 (Tel). 1 408-573-1858 (Fax). [www.abbomax.com](http://www.abbomax.com) [info@abbomax.com](mailto:info@abbomax.com)