



## Mouse anti CD203c Monoclonal Antibody

Alternative Name(s): E-NPP3, ENPP3

### Order Information

- **Description:** CD203c
- **Catalogue:** 606-710
- **Lot:** See label
- **Size:** 100ug/200ul
- **Host:** Mouse
- **Clone:** NP4D6C
- **Application:** FC
- **Cross Reactivity:** Hu

### **ANTIGEN PREPARATION**

Recombinant protein of human CD203c

### **BACKGROUND**

CD203c, a transmembrane protein and a member of the ectoenzyme family, is involved in the hydrolysis of extracellular oligonucleotides, nucleoside phosphates, and NAD (possesses ATPase and ATP pyrophosphatase activity). The molecular weight of CD203c is between 130 and 150 kD under reducing conditions and 270 kD under non-reducing conditions. CD203c is expressed on basophils and mast cells, and is highly expressed on activated basophils. Secretory glands in endometrium and glioma cells are also positive. CD203c is a multifunctional ectoenzyme involved in the clearance of extracellular nucleotides whose substrates include nucleoside triphosphates, nucleoside diphosphates, cAMP, and NAD.

### **PURIFICATION**

The mouse IgG is purified by Protein A-Affinity Chromatography according to Isotyping

### **FORMULATION**

0.01M Phosphate-Buffered Saline (pH7.2-7.4) with 0.01% NaN<sub>3</sub> + antibody stabilizer

### **SPECIFICITY**

This antibody recognizes human CD203c. The other species are not tested.

### **STORAGE**

The antibodies are stable for 24 months from date of receipt when stored at -20oC to -70oC. The antibodies can be stored at 2oC-8oC for three month without detectable loss of activity. Avoid repeated freezing-thawing cycles.

### **APPLICATIONS/SUGGESTED WORKING DILUTIONS\***

- Western Blot: 0.1-1 µg/ml
- ELISA: 0.01-0.1 µg/ml
- Immunoprecipitation: 2-5 µg/ml
- IHC: 2-10 µg/ml
- Flow cytometry: 5-10 µg/10<sup>6</sup> cells
- MW (kDa): 130 kDa
- Positive Control: Kidney Tissue
- Cellular Location: Cell Membrane

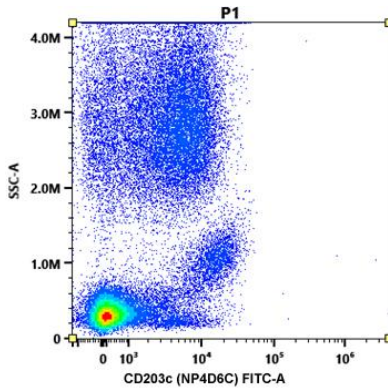
\*Optimal dilutions should be determined by researchers for the specific applications.

### **FOR RESEARCH USE ONLY.**

AbboMax, Inc 2528 Qume Drive, Suite 8, San Jose, California 95131, USA  
1 408-573-1898 (Tel). 1 408-573-1858 (Fax). [www.abbomax.com](http://www.abbomax.com) [info@abbomax.com](mailto:info@abbomax.com)



**DATA ATTACHMENTS**



Flow Cytometry: Human PBMC (100 ul) stained with fluorescence labeled mouse anti CD203c (Cat# 606-710) (5 ul) for 20 min @ RT

**REFERENCES**

**FOR RESEARCH USE ONLY.**

AbboMax, Inc 2528 Qume Drive, Suite 8, San Jose, California 95131, USA  
1 408-573-1898 (Tel). 1 408-573-1858 (Fax). [www.abbomax.com](http://www.abbomax.com) [info@abbomax.com](mailto:info@abbomax.com)