



## Mouse anti CD159c Monoclonal Antibody

Alternative Name(s): Killer Cell Lectin Like Receptor C2, KLRC2, NK Cell Receptor C

### Order Information

- **Description:** CD159c
- **Catalogue:** 606-690
- **Lot:** See label
- **Size:** 100ug/200ul
- **Host:** Mouse
- **Clone:** NKG2C
- **Application:** FC
- **Cross Reactivity:** Hu

### **ANTIGEN PREPARATION**

Recombinant protein of human CD159c

### **BACKGROUND**

CD159c is 30 kDa type II transmembrane protein. It is also known as NKG2C or KLRC2 which expressed on NK and NKT cells that can mediate lysis of certain tumor cells and virus-infected cells without previous activation. CD159c is an activating NK cell receptor and it is expressed as a heterodimer with CD94. In human, NKG2C/CD94 complex interacts HLA-E on target cells and delivers activating signals through immunoreceptor tyrosine-based activation.

### **PURIFICATION**

The mouse IgG is purified by Protein A-Affinity Chromatography according to Isotyping

### **FORMULATION**

0.01M Phosphate-Buffered Saline (pH7.2-7.4) with 0.01% NaN<sub>3</sub> + antibody stabilizer

### **SPECIFICITY**

This antibody recognizes human CD159c. The other species are not tested.

### **STORAGE**

The antibodies are stable for 24 months from date of receipt when stored at -20oC to -70oC. The antibodies can be stored at 2oC-8oC for three month without detectable loss of activity. Avoid repeated freezing-thawing cycles.

### **APPLICATIONS/SUGGESTED WORKING DILUTIONS\***

- Western Blot: 0.1-1 µg/ml
- ELISA: 0.01-0.1 µg/ml
- Immunoprecipitation: 2-5 µg/ml
- IHC: 2-10 µg/ml
- Flow cytometry: 5-10 µg/10<sup>6</sup> cells
- MW (kDa): 30 kDa
- Positive Control: Kidney Tissue
- Cellular Location: Cell Membrane

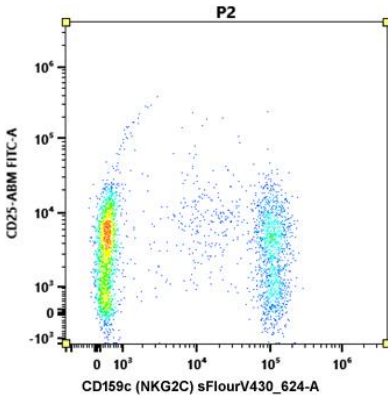
\*Optimal dilutions should be determined by researchers for the specific applications.

### **FOR RESEARCH USE ONLY.**

AbboMax, Inc 2528 Qume Drive, Suite 8, San Jose, California 95131, USA  
1 408-573-1898 (Tel). 1 408-573-1858 (Fax). [www.abbomax.com](http://www.abbomax.com) [info@abbomax.com](mailto:info@abbomax.com)



**DATA ATTACHMENTS**



Flow Cytometry: Human PBMC (100 ul) stained with fluorescence labeled mouse anti CD159c (Cat# 606-690) (5 ul) for 20 min @ RT

**REFERENCES**

**FOR RESEARCH USE ONLY.**

AbboMax, Inc 2528 Qume Drive, Suite 8, San Jose, California 95131, USA  
1 408-573-1898 (Tel). 1 408-573-1858 (Fax). [www.abbomax.com](http://www.abbomax.com) [info@abbomax.com](mailto:info@abbomax.com)