



## Mouse anti CD158e Monoclonal Antibody

Alternative Name(s): NKAT3, NKB1, KIR-NKB1, p70

### Order Information

- **Description:** CD158e
- **Catalogue:** 606-670
- **Lot:** See label
- **Size:** 100ug/200ul
- **Host:** Mouse
- **Clone:** DX27
- **Application:** FC
- **Cross Reactivity:** Hu

### **ANTIGEN PREPARATION**

Recombinant protein of human CD158e

### **BACKGROUND**

CD158e belongs to the Killer cell immunoglobulin-like receptors (KIRs), a transmembrane glycoproteins expressed by natural killer cells and subsets of T cells. The KIR proteins are classified by the number of extracellular immunoglobulin domains (2D or 3D) and by whether they have a long (L) or short (S) cytoplasmic domain. KIR proteins with the long cytoplasmic domain transduce inhibitory signals upon ligand binding via an immune tyrosine-based inhibitory motif (ITIM), while KIR proteins with the short cytoplasmic domain lack the ITIM motif and instead associate with the TYRO protein tyrosinekinase binding protein to transduce activating signals. The ligand for several KIR proteins are subsets of HLA class I molecules; thus, KIR proteins are thought to play an important role in regulation of the immune response.

### **PURIFICATION**

The mouse IgG is purified by Protein A-Affinity Chromatography according to Isotyping

### **FORMULATION**

0.01M Phosphate-Buffered Saline (pH7.2-7.4) with 0.01% NaN<sub>3</sub> + antibody stabilizer

### **SPECIFICITY**

This antibody recognizes human CD158e. The other species are not tested.

### **STORAGE**

The antibodies are stable for 24 months from date of receipt when stored at -20oC to -70oC. The antibodies can be stored at 2oC-8oC for three month without detectable loss of activity. Avoid repeated freezing-thawing cycles.

### **APPLICATIONS/SUGGESTED WORKING DILUTIONS\***

- Western Blot: 0.1-1 µg/ml
- ELISA: 0.01-0.1 µg/ml
- Immunoprecipitation: 2-5 µg/ml
- IHC: 2-10 µg/ml
- Flow cytometry: 5-10 µg/10<sup>6</sup> cells
- MW (kDa): 70 kDa
- Positive Control: Kidney Tissue
- Cellular Location: Cell Membrane

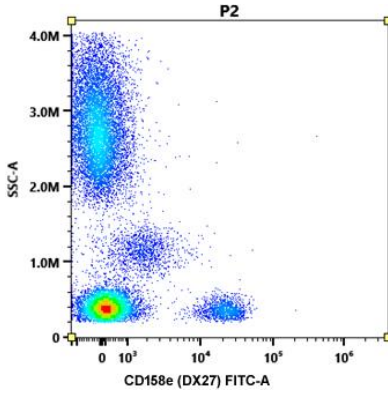
\*Optimal dilutions should be determined by researchers for the specific applications.

### **FOR RESEARCH USE ONLY.**

AbboMax, Inc 2528 Qume Drive, Suite 8, San Jose, California 95131, USA  
1 408-573-1898 (Tel). 1 408-573-1858 (Fax). [www.abbomax.com](http://www.abbomax.com) [info@abbomax.com](mailto:info@abbomax.com)



**DATA ATTACHMENTS**



Flow Cytometry: Human PBMC (100 ul) stained with fluorescence labeled mouse anti CD158e (Cat# 606-670) (5 ul) for 20 min @ RT

**REFERENCES**

**FOR RESEARCH USE ONLY.**

AbboMax, Inc 2528 Qume Drive, Suite 8, San Jose, California 95131, USA  
1 408-573-1898 (Tel). 1 408-573-1858 (Fax). [www.abbomax.com](http://www.abbomax.com) [info@abbomax.com](mailto:info@abbomax.com)