



Mouse anti CD86 Monoclonal Antibody

Alternative Name(s): B7-2, B70, Ly-58

Order Information

- **Description:** CD86
- **Catalogue:** 606-650
- **Lot:** See label
- **Size:** 100ug/200ul
- **Host:** Mouse
- **Clone:** BU63
- **Application:** FC
- **Cross Reactivity:** Hu

ANTIGEN PREPARATION

Recombinant protein of human CD86

BACKGROUND

CD86 is an 80kDa a type I membrane protein that is a member of the immunoglobulin superfamily. It is expressed by antigen-presenting cells, and it is the ligand for two proteins at the cell surface of T cells, CD28 antigen and cytotoxic T-lymphocyte-associated protein 4. Binding of this protein with CD28 antigen is a costimulatory signal for activation of the T-cell. Binding of this protein with cytotoxic T-lymphocyte-associated protein 4 negatively regulates T-cell activation and diminishes the immune response

PURIFICATION

The mouse IgG is purified by Protein A-Affinity Chromatography according to Isotyping

FORMULATION

0.01M Phosphate-Buffered Saline (pH7.2-7.4) with 0.01% NaN₃ + antibody stabilizer

SPECIFICITY

This antibody recognizes human CD86. The other species are not tested.

STORAGE

The antibodies are stable for 24 months from date of receipt when stored at -20oC to -70oC. The antibodies can be stored at 2oC-8oC for three month without detectable loss of activity. Avoid repeated freezing-thawing cycles.

APPLICATIONS/SUGGESTED WORKING DILUTIONS*

- Western Blot: 0.1-1 µg/ml
- ELISA: 0.01-0.1 µg/ml
- Immunoprecipitation: 2-5 µg/ml
- IHC: 2-10 µg/ml
- Flow cytometry: 5-10 µg/10⁶ cells
- MW (kDa): 80 kDa
- Positive Control: Kidney Tissue
- Cellular Location: Cell Membrane

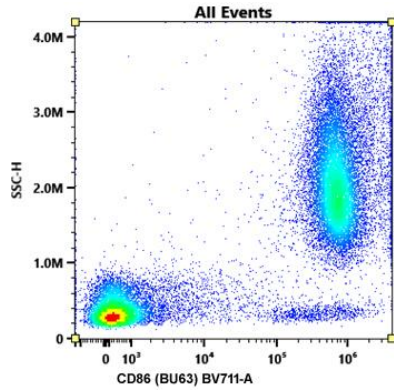
*Optimal dilutions should be determined by researchers for the specific applications.

FOR RESEARCH USE ONLY.

AbboMax, Inc 2528 Qume Drive, Suite 8, San Jose, California 95131, USA
1 408-573-1898 (Tel). 1 408-573-1858 (Fax). www.abbomax.com info@abbomax.com



DATA ATTACHMENTS



Flow Cytometry: Human PBMC (100 ul) stained with fluorescence labeled mouse anti CD86 (Cat# 606-650) (5 ul) for 20 min @ RT

REFERENCES

FOR RESEARCH USE ONLY.

AbboMax, Inc 2528 Qume Drive, Suite 8, San Jose, California 95131, USA
1 408-573-1898 (Tel). 1 408-573-1858 (Fax). www.abbomax.com info@abbomax.com