



Mouse anti p63 Monoclonal Antibody

Alternative Name(s): TP63, Tumor Protein P63, P63

Order Information

- **Description:** P63
- **Catalogue:** 606-620
- **Lot:** See label
- **Size:** 100ug/200ul
- **Host:** Mouse
- **Clone:** ZY609
- **Application:** IHC(P), FC
- **Cross Reactivity:** Hu, Ms, Rt

ANTIGEN PREPARATION

Recombinant protein of human CD63

BACKGROUND

P63 is a member of the p53 family of transcription factors. The TP63 gene encodes two major isoforms, p63 (TA) and p63 (Δ N) that are produced from alternative start sites through alternative promoter usage. These isoforms function during skin development and maintenance, adult stem/progenitor cell regulation, heart development and premature aging. Some isoforms have been found to protect the germline by eliminating oocytes or testicular germ cells that have suffered DNA damage.

PURIFICATION

The mouse IgG is purified by Protein A-Affinity Chromatography according to Isotyping

FORMULATION

0.01M Phosphate-Buffered Saline (pH7.2-7.4) with 0.01% NaN₃ + antibody stabilizer

SPECIFICITY

This antibody recognizes human P63. It also reacts with mouse and rat. The other species are not tested.

STORAGE

The antibodies are stable for 24 months from date of receipt when stored at -20oC to -70oC. The antibodies can be stored at 2oC-8oC for three month without detectable loss of activity. Avoid repeated freezing-thawing cycles.

APPLICATIONS/SUGGESTED WORKING DILUTIONS*

- Western Blot: 0.1-1 μ g/ml
- ELISA: 0.01-0.1 μ g/ml
- Immunoprecipitation: 2-5 μ g/ml
- IHC: 2-10 μ g/ml
- Flow cytometry: 5-10 μ g/10⁶ cells
- MW (kDa): 63kDa
- Positive Control: Kidney Tissue
- Cellular Location: Cell Membrane

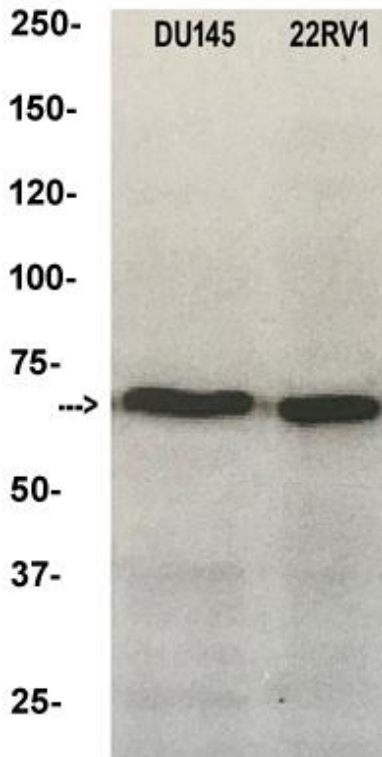
*Optimal dilutions should be determined by researchers for the specific applications.

FOR RESEARCH USE ONLY.

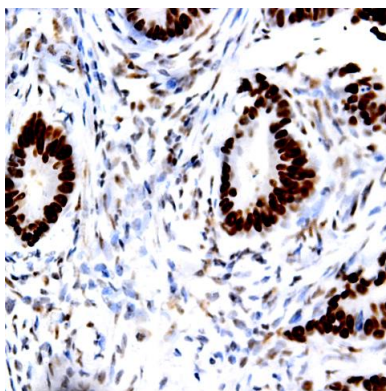
AbboMax, Inc 2528 Qume Drive, Suite 8, San Jose, California 95131, USA
1 408-573-1898 (Tel). 1 408-573-1858 (Fax). www.abbomax.com info@abbomax.com

DATA ATTACHMENTS

MW (kDa)



Western Blot: The cell lysate derived from Prostate cell line (DU145 and 22RV1) was resolved onto 12% SDS-PAGE and immunoblotted by Mouse anti P63 (Cat# 606-620) at 1:500. An immunoreactive protein was observed around 63 kDa.



Immunohistochemistry: Human prostate carcinoma (FFPE) stained with Mouse anti-P63 (Cat# 606-620) at 1:200 for 10 min @ RT. Staining of formalin-fixed tissue requires boiling tissue sections in 10 mM Citrate Buffer, pH 6.0 for 10 min followed by cooling at RT for 20 min.

REFERENCES

FOR RESEARCH USE ONLY.