



Mouse anti CD41a Monoclonal Antibody

Alternative Name(s): gpIIb, CD41a

Order Information

- **Description:** CD41a
- **Catalogue:** 606-600
- **Lot:** See label
- **Size:** 100ug/200ul
- **Host:** Mouse
- **Clone:** HIP8
- **Application:** IHC(P), FC
- **Cross Reactivity:** Hu

ANTIGEN PREPARATION

Recombinant protein of human CD41a

BACKGROUND

CD41 is a 125/25 kD α subunit of the gpIIb/IIIa (CD41/CD61) complex. CD41 is a heterodimer composed of a heavy chain (gpIIb α) and light chain (gpIIb β) linked by a single disulfide bond. It is a member of the integrin family primarily expressed on platelets and megakaryocytes. CD41 has been reported to be involved with platelet aggregation and platelet attachment to the ECM. CD41/CD61 complex acts as the receptor for fibrinogen, fibronectin, Von Willebrand factor, and thrombin.

PURIFICATION

The mouse IgG is purified by Protein A-Affinity Chromatography according to Isotyping

FORMULATION

0.01M Phosphate-Buffered Saline (pH7.2-7.4) with 0.01% NaN₃ + antibody stabilizer

SPECIFICITY

This antibody recognizes human CD41a. The other species are not tested.

STORAGE

The antibodies are stable for 24 months from date of receipt when stored at -20oC to -70oC. The antibodies can be stored at 2oC-8oC for three month without detectable loss of activity. Avoid repeated freezing-thawing cycles.

APPLICATIONS/SUGGESTED WORKING DILUTIONS*

- Western Blot: 0.1-1 μ g/ml
- ELISA: 0.01-0.1 μ g/ml
- Immunoprecipitation: 2-5 μ g/ml
- IHC: 2-10 μ g/ml
- Flow cytometry: 5-10 μ g/10⁶ cells
- MW (kDa): 125/25kDa
- Positive Control: Kidney Tissue
- Cellular Location: Cell Membrane

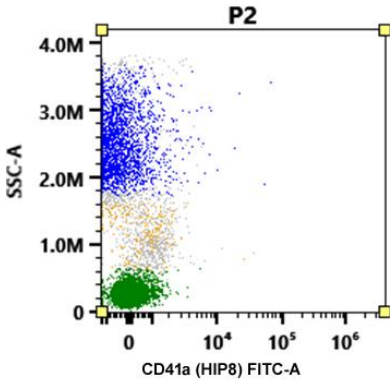
*Optimal dilutions should be determined by researchers for the specific applications.

FOR RESEARCH USE ONLY.

AbboMax, Inc 2528 Qume Drive, Suite 8, San Jose, California 95131, USA
1 408-573-1898 (Tel). 1 408-573-1858 (Fax). www.abbomax.com info@abbomax.com



DATA ATTACHMENTS



Flow Cytometry: Human PBMC (100 ul) stained with fluorescence labeled mouse anti CD41a (Cat# 606-600) (5 ul) for 20 min @ RT

REFERENCES

FOR RESEARCH USE ONLY.

AbboMax, Inc 2528 Qume Drive, Suite 8, San Jose, California 95131, USA
1 408-573-1898 (Tel). 1 408-573-1858 (Fax). www.abbomax.com info@abbomax.com