



Mouse anti Tau Monoclonal Antibody

Alternative Name(s): Microtubule-associated protein tau, PHF-tau, paired helical filament-tau, neurofibrillary tangle, microtubule-associated protein tau, isoform 4, G protein beta1/gamma2 subunit-interacting factor 1, DDPAC, FTDP-17, MAPTL, MSTD, MTBT1, MTBT2, PPND

Order Information

- **Description:** Tau
- **Catalogue:** 606-320
- **Lot:** See label
- **Size:** 100ug/200ul
- **Host:** Mouse
- **Clone:** Tau 5
- **Application:** IHC(P), WB
- **Reactivity:** Hu

ANTIGEN PREPARATION

A recombinant protein of human Tau

BACKGROUND

The tau proteins are a group of six highly soluble protein isoforms produced from the gene MART. This gene encodes the microtubule-associated protein tau (MAPT) whose transcript undergoes complex, regulated alternative splicing, giving rise to several mRNA species. MAPT transcripts are differentially expressed in the nervous system, depending on stage of neuronal maturation and neuron type. Tau is a microtubule-associated protein linked with neurodegenerative diseases. It was shown in some studies that the capacity of tau to maintain its normal biological function is dependent upon its phosphorylation state. In Alzheimer's and Parkinson's diseases, there is a hyperphosphorylation of tau that leads to the intracellular accumulation of tau in the form of neurofibrillary tangles. It has been shown that tau may be secreted in the interstitial fluid in an active manner as reflected by high and constant concentration of extracellular tau during Alzheimer's pathology.

PURIFICATION

The mouse IgG is purified by Protein A-Affinity Chromatography according to Isotyping

FORMULATION

This affinity purified antibody is supplied in sterile Phosphatebuffered saline (pH7.2) containing antibody stabilizer

SPECIFICITY

This antibody recognizes human Tau protein. The other species are not tested.

STORAGE

The antibodies are stable for 24 months from date of receipt when stored at -20oC to -70oC. The antibodies can be stored at 2oC-8oC for three month without detectable loss of activity. Avoid repeated freezing-thawing cycles.

APPLICATIONS/SUGGESTED WORKING DILUTIONS*

- Western Blot: 0.1-1 µg/ml
- ELISA: 0.01-0.1 µg/ml
- Immunoprecipitation: 2-5 µg/ml
- IHC: 2-10 µg/ml
- Flow cytometry: Not tested
- Molecular Weight: 46.0
- Positive Control: Kidney Tissue
- Cellular Location: Cell Membrane

FOR RESEARCH USE ONLY.

AbboMax, Inc 2528 Qume Drive, Suite 8, San Jose, California 95131, USA
1 408-573-1898 (Tel). 1 408-573-1858 (Fax). www.abbomax.com info@abbomax.com



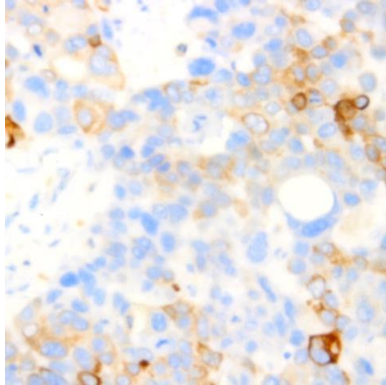
*Optimal dilutions should be determined by researchers for the specific applications.

FOR RESEARCH USE ONLY.

AbboMax, Inc 2528 Qume Drive, Suite 8, San Jose, California 95131, USA
1 408-573-1898 (Tel). 1 408-573-1858 (Fax). www.abbomax.com info@abbomax.com



DATA ATTACHMENTS



Immunohistochemistry: Human brain (FFPE) stained with Mouse anti- Tau (Cat# 606-320) at 1:200 for 10 min @ RT. Staining of formalin-fixed tissue requires boiling tissue sections in 10 mM Citrate Buffer, pH 6.0 for 10 min followed by cooling at RT for 20 min.

REFERENCES

FOR RESEARCH USE ONLY.

AbboMax, Inc 2528 Qume Drive, Suite 8, San Jose, California 95131, USA
1 408-573-1898 (Tel). 1 408-573-1858 (Fax). www.abbomax.com info@abbomax.com