



Mouse anti SSEA-4 Monoclonal Antibody

Alternative Name(s): nan

Order Information

- **Description:** SSEA-4
- **Catalogue:** 606-280
- **Lot:** See label
- **Size:** 100ug/200ul
- **Host:** Mouse
- **Clone:** MC813-70
- **Application:** IHC(P), WB
- **Reactivity:** Hu

ANTIGEN PREPARATION

A recombinant protein SSEA-4

BACKGROUND

The antibody SSEA-4 (Stage-specific embryonic antigen 4) MC813-70 was raised against human teratocarcinoma cell line. This monoclonal antibody reacts with a glycolipid carbohydrate epitope on SSEA-4 protein. SSEA-4, a cell surface antigen, is a well-known marker of embryonic stem cells, embryonal carcinoma cells and induced pluripotent stem cells. In human cells, these surface markers are down-regulated during the differentiation process. Glycosphingolipids, such as the globo-series GSLs stage-specific embryonic antigen 3 (SSEA-3), SSEA-4, and Globo-H, are known to be associated with various biological processes such as cell recognition, cell adhesion, and signal transduction. SSEA-4 is also frequently overexpressed in cancer cells and cancer stem cells.

PURIFICATION

The mouse IgG is purified by Protein A-Affinity Chromatography according to Isotyping

FORMULATION

This affinity purified antibody is supplied in sterile Phosphatebuffered saline (pH7.2) containing antibody stabilizer

SPECIFICITY

This antibody recognizes human SSEA-4 protein. The other species are not tested.

STORAGE

The antibodies are stable for 24 months from date of receipt when stored at -20°C to -70°C . The antibodies can be stored at 2°C - 8°C for three month without detectable loss of activity. Avoid repeated freezing-thawing cycles.

APPLICATIONS/SUGGESTED WORKING DILUTIONS*

- Western Blot: 0.1-1 $\mu\text{g/ml}$
- ELISA: 0.01-0.1 $\mu\text{g/ml}$
- Immunoprecipitation: 2-5 $\mu\text{g/ml}$
- IHC: 2-10 $\mu\text{g/ml}$
- Flow cytometry: Not tested
- Molecular Weight: 28.0
- Positive Control: Kidney Tissue
- Cellular Location: Cell Membrane

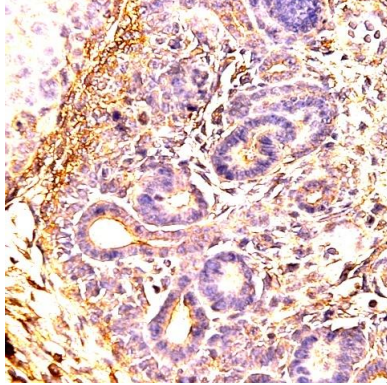
*Optimal dilutions should be determined by researchers for the specific applications.

FOR RESEARCH USE ONLY.

AbboMax, Inc 2528 Qume Drive, Suite 8, San Jose, California 95131, USA
1 408-573-1898 (Tel). 1 408-573-1858 (Fax). www.abbomax.com info@abbomax.com



DATA ATTACHMENTS



Immunohistochemistry: Mouse embryonic tissue (FFPE) stained with Mouse anti-SSEA4 (Cat# 606-280) at 1:200 for 10 min @ RT. Staining of formalin-fixed tissue requires boiling tissue sections in 10 mM Citrate Buffer, pH 6.0 for 10 min followed by cooling at RT for 20 min.

REFERENCES

FOR RESEARCH USE ONLY.

AbboMax, Inc 2528 Qume Drive, Suite 8, San Jose, California 95131, USA
1 408-573-1898 (Tel). 1 408-573-1858 (Fax). www.abbomax.com info@abbomax.com