



## Mouse anti SSEA-3 Monoclonal Antibody

Alternative Name(s): nan

### Order Information

- **Description:** SSEA-3
- **Catalogue:** 606-270
- **Lot:** See label
- **Size:** 100ug/200ul
- **Host:** Mouse
- **Clone:** MC-631
- **Application:** IHC(P), WB
- **Reactivity:** Hu

### **ANTIGEN PREPARATION**

A recombinant protein SSEA-3

### **BACKGROUND**

Stage-specific embryonic antigen 3 (SSEA3) is a glycosphingolipid, a cell surface antigen. SSEA-3 molecule plays an important role in identifying many types of cells with pluripotent characteristics. Gb5 is also known as the SSEA-3 is a frequently used stem cell marker. SSEA-3 and  $\beta$ GalT5 are cancer specific and significant markers for breast cancer stem cells. It was also shown that SSEA-3 and Globo H are markers for a subpopulation of CSCs in breast cancer patients. Human teratocarcinoma stem cells are SSEA3-positive.

### **PURIFICATION**

The mouse IgG is purified by Protein A-Affinity Chromatography according to Isotyping

### **FORMULATION**

This affinity purified antibody is supplied in sterile Phosphatebuffered saline (pH7.2) containing antibody stabilizer

### **SPECIFICITY**

This antibody recognizes human SSEA-3 protein. The other species are not tested.

### **STORAGE**

The antibodies are stable for 24 months from date of receipt when stored at  $-20^{\circ}\text{C}$  to  $-70^{\circ}\text{C}$ . The antibodies can be stored at  $2^{\circ}\text{C}$ - $8^{\circ}\text{C}$  for three month without detectable loss of activity. Avoid repeated freezing-thawing cycles.

### **APPLICATIONS/SUGGESTED WORKING DILUTIONS\***

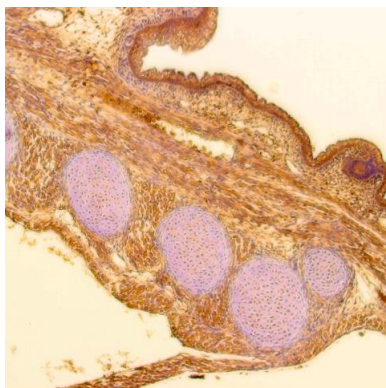
- Western Blot: 0.1-1  $\mu\text{g/ml}$
- ELISA: 0.01-0.1  $\mu\text{g/ml}$
- Immunoprecipitation: 2-5  $\mu\text{g/ml}$
- IHC: 2-10  $\mu\text{g/ml}$
- Flow cytometry: Not tested
- Molecular Weight: 225.0
- Positive Control: Kidney Tissue
- Cellular Location: Cell Membrane

\*Optimal dilutions should be determined by researchers for the specific applications.

### **FOR RESEARCH USE ONLY.**

AbboMax, Inc 2528 Qume Drive, Suite 8, San Jose, California 95131, USA  
1 408-573-1898 (Tel). 1 408-573-1858 (Fax). [www.abbomax.com](http://www.abbomax.com) [info@abbomax.com](mailto:info@abbomax.com)

## DATA ATTACHMENTS



Immunohistochemistry: Mouse embryonic tissue (FFPE) stained with Mouse anti-SSEA3 (Cat# 606-270) at 1:200 for 10 min @ RT. Staining of formalin-fixed tissue requires boiling tissue sections in 10 mM Citrate Buffer, pH 6.0 for 10 min followed by cooling at RT for 20 min.

## REFERENCES

### FOR RESEARCH USE ONLY.

AbboMax, Inc 2528 Qume Drive, Suite 8, San Jose, California 95131, USA  
1 408-573-1898 (Tel). 1 408-573-1858 (Fax). [www.abbomax.com](http://www.abbomax.com) [info@abbomax.com](mailto:info@abbomax.com)