



Mouse anti SOX-11 Monoclonal Antibody

Alternative Name(s): nan

Order Information

- **Description:** SOX-11
- **Catalogue:** 606-260
- **Lot:** See label
- **Size:** 100ug/200ul
- **Host:** Mouse
- **Clone:** SOX11-C1
- **Application:** IHC(P), WB
- **Reactivity:** Hu

ANTIGEN PREPARATION

A recombinant protein

BACKGROUND

Sox11 is a member of the SOX (SRY-related HMG-box) family of transcription factors involved in the regulation of embryonic development and in the determination of the cell fate. The protein may act as a transcriptional regulator after forming a protein complex with other proteins. The protein may function in the developing nervous system and play a role in tumorigenesis. Sox4 and Sox11 operate downstream from proneural bHLH proteins and are vital for the establishment of pan-neuronal protein expression. Sox11 is also prominently expressed in the neurogenic areas of the adult brain. Sox11 expression is strictly confined to doublecortin-expressing neuronally committed precursors and immature neurons. Sox11 is involved in the transcriptional regulation of specific gene expression programs in adult neurogenesis at the stage of the immature neuron. It was shown that de novo SOX11 mutations cause Coffin–Siris syndrome. SOX11 has also been detected in some malignant tumors, including mantle cell lymphoma.

PURIFICATION

The mouse IgG is purified by Protein A-Affinity Chromatography according to Isotyping

FORMULATION

This affinity purified antibody is supplied in sterile Phosphatebuffered saline (pH7.2) containing antibody stabilizer

SPECIFICITY

This antibody recognizes human SOX-11 protein. The other species are not tested.

STORAGE

The antibodies are stable for 24 months from date of receipt when stored at -20°C to -70°C . The antibodies can be stored at 2°C - 8°C for three month without detectable loss of activity. Avoid repeated freezing-thawing cycles.

APPLICATIONS/SUGGESTED WORKING DILUTIONS*

- Western Blot: 0.1-1 $\mu\text{g/ml}$
- ELISA: 0.01-0.1 $\mu\text{g/ml}$
- Immunoprecipitation: 2-5 $\mu\text{g/ml}$
- IHC: 2-10 $\mu\text{g/ml}$
- Flow cytometry: Not tested
- Molecular Weight: 60-65
- Positive Control: Kidney Tissue
- Cellular Location: Cell Membrane

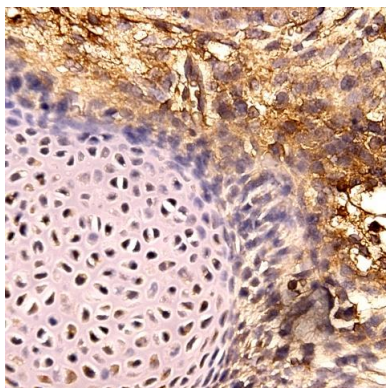
*Optimal dilutions should be determined by researchers for the specific applications.

FOR RESEARCH USE ONLY.

AbboMax, Inc 2528 Qume Drive, Suite 8, San Jose, California 95131, USA
1 408-573-1898 (Tel). 1 408-573-1858 (Fax). www.abbomax.com info@abbomax.com



DATA ATTACHMENTS



Immunohistochemistry: Mouse embryonic tissue Tonsil (FFPE) stained with Mouse anti-SOX11 (Cat# 606-260) at 1:200 for 10 min @ RT. Staining of formalin-fixed tissue requires boiling tissue sections in 10 mM Citrate Buffer, pH 6.0 for 10 min followed by cooling at RT for 20 min.

REFERENCES

FOR RESEARCH USE ONLY.

AbboMax, Inc 2528 Qume Drive, Suite 8, San Jose, California 95131, USA
1 408-573-1898 (Tel). 1 408-573-1858 (Fax). www.abbomax.com info@abbomax.com