



Mouse anti Occludin Monoclonal Antibody

Alternative Name(s): nan

Order Information

- **Description:** Occludin
- **Catalogue:** 606-110
- **Lot:** See label
- **Size:** 100ug/200ul
- **Host:** Mouse
- **Clone:** OC-3F10
- **Application:** IHC(P), WB
- **Reactivity:** Hu, Rat, Bacteria, chicken

ANTIGEN PREPARATION

nan

BACKGROUND

Occludin is an integral membrane protein that is required for cytokine-induced regulation of the tight junction paracellular permeability barrier. Mounting evidence demonstrated that occludin is not only present in epithelial/endothelial cells, but is also found in large amounts in cells that do not have tight junctions but have very active metabolism. Astrocytes and neurons express the tight junction-specific protein occludin in vitro. Occludin is an enzyme that oxidizes NADH. Mutations in this gene are thought to be a cause of band-like calcification with simplified gyration and polymicrogyria (BLC-PMG), an autosomal recessive neurologic disorder that is also known as pseudo-TORCH syndrome. Altered occludin expression has been linked to dedifferentiation and cancer progression and invasiveness. Occludin is overexpressed in Alzheimer's disease and vascular dementia.

PURIFICATION

The mouse IgG is purified by Protein A-Affinity Chromatography according to Isotyping

FORMULATION

This affinity purified antibody is supplied in sterile Phosphatebuffered saline (pH7.2) containing antibody stabilizer

SPECIFICITY

This antibody recognizes human Occludin protein. The other species are not tested.

STORAGE

The antibodies are stable for 24 months from date of receipt when stored at -20°C to -70°C . The antibodies can be stored at 2°C - 8°C for three month without detectable loss of activity. Avoid repeated freezing-thawing cycles.

APPLICATIONS/SUGGESTED WORKING DILUTIONS*

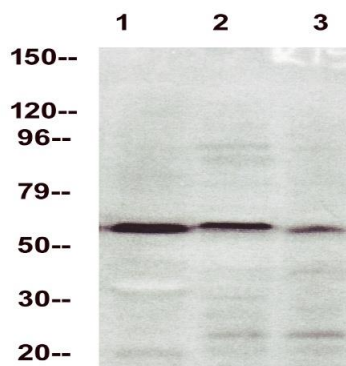
- Western Blot: 0.1-1 $\mu\text{g/ml}$
- ELISA: 0.01-0.1 $\mu\text{g/ml}$
- Immunoprecipitation: 2-5 $\mu\text{g/ml}$
- IHC: 2-10 $\mu\text{g/ml}$
- Flow cytometry: Not tested
- Molecular Weight: 59.0
- Positive Control: Kidney Tissue
- Cellular Location: Cell Membrane

*Optimal dilutions should be determined by researchers for the specific applications.

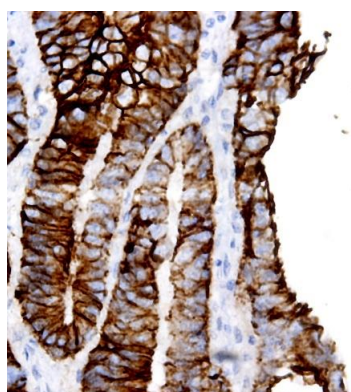
FOR RESEARCH USE ONLY.

AbboMax, Inc 2528 Qume Drive, Suite 8, San Jose, California 95131, USA
1 408-573-1898 (Tel). 1 408-573-1858 (Fax). www.abbomax.com info@abbomax.com

DATA ATTACHMENTS



Western Blot: The cell lysates derived from 1) A431, 2) MCF-7, 3) Colo202 Immunoblotted by mouse anti-Occludin (Cat#606-110) antibody at 1:500. An immune-reactive band is observed around ~55kDa.



Immunohistochemistry: Human colon carcinoma (FFPE) stained with Mouse anti-Occludin (Cat# 606-110) at 1:200 for 10 min @ RT. Staining of formalin-fixed tissue requires boiling tissue sections in 10 mM Citrate Buffer, pH 6.0 for 10 min followed by cooling at RT for 20 min.

REFERENCES

FOR RESEARCH USE ONLY.

AbboMax, Inc 2528 Qume Drive, Suite 8, San Jose, California 95131, USA
1 408-573-1898 (Tel). 1 408-573-1858 (Fax). www.abbomax.com info@abbomax.com