



Mouse anti DOG1 Monoclonal Antibody

Alternative Name(s): nan

Order Information

- **Description:** DOG1
- **Catalogue:** 605-780
- **Lot:** See label
- **Size:** 100ug/200ul
- **Host:** Mouse
- **Clone:** ZY210
- **Application:** IHC(P)
- **Reactivity:** Hu

ANTIGEN PREPARATION

A partial recombinant protein of human DOG1

BACKGROUND

DOG-1, ANO1, or 'anoctamin 1'. Is the 986-amino acid protein is a member of Anoctamin family. DOG1 is a novel gene on gastrointestinal stromal tumors (GISTs) that encodes the chloride channel protein anoctamin 1, also known as discovered on GIST-1 (DOG1) protein. DOG-1 is expressed in gastrointestinal stromal tumors irrespective of kit or PDGFR alpha mutation status. By contrast to the original concept that DOG1 antibodies are specific to GIST neoplasms, the studies reviewed showed that the data suggest DOG1 positivity in select non-GIST tumors. Epithelial membrane antigen (EMA) and DOG1 are also used as marker of epithelial cells, particularly the luminal cells, of salivary gland tumors. The recent studies show that in normal tissues, DOG1 is expressed strongly in the intercellular canaliculi of eccrine glands, moderately in the myoepithelial cells of mammary and anogenital mammary-like glands. All apocrine-type cutaneous mixed tumors show apical-luminal positivity for DOG1. Other sweat gland tumors, including hidrocystadenoma, spiradenoma, cylindroma and apocrine carcinoma, also express DOG1 focally with an apical-luminal pattern.

PURIFICATION

The mouse IgG is purified by Protein A-Affinity Chromatography according to Isotyping

FORMULATION

This affinity purified antibody is supplied in sterile Phosphatebuffered saline (pH7.2) containing antibody stabilizer

SPECIFICITY

This antibody recognizes human DOG1 protein. The other species are not tested.

STORAGE

The antibodies are stable for 24 months from date of receipt when stored at -20oC to -70oC. The antibodies can be stored at 2oC-8oC for three month without detectable loss of activity. Avoid repeated freezing-thawing cycles.

APPLICATIONS/SUGGESTED WORKING DILUTIONS*

- Western Blot: 0.1-1 µg/ml
- ELISA: 0.01-0.1 µg/ml
- Immunoprecipitation: 2-5 µg/ml
- IHC: 2-10 µg/ml
- Flow cytometry: Not tested
- Molecular Weight: 114.0
- Positive Control: Kidney Tissue
- Cellular Location: Cell Membrane

FOR RESEARCH USE ONLY.

AbboMax, Inc 2528 Qume Drive, Suite 8, San Jose, California 95131, USA
1 408-573-1898 (Tel). 1 408-573-1858 (Fax). www.abbomax.com info@abbomax.com

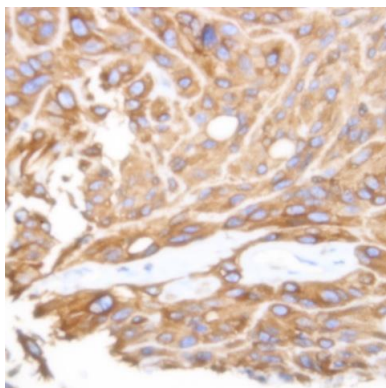


*Optimal dilutions should be determined by researchers for the specific applications.

FOR RESEARCH USE ONLY.

AbboMax, Inc 2528 Qume Drive, Suite 8, San Jose, California 95131, USA
1 408-573-1898 (Tel). 1 408-573-1858 (Fax). www.abbomax.com info@abbomax.com

DATA ATTACHMENTS



Immunohistochemistry: Human GIST carcinoma (FFPE) stained with Mouse anti-DOG1 (Clone ZY210) (Cat# 605-780) at 1:200 for 10 min @ RT. Staining of formalin-fixed tissue requires boiling tissue sections in 10 mM Citrate Buffer, pH 6.0 for 10 min followed by cooling at RT for 20 min.

REFERENCES

FOR RESEARCH USE ONLY.

AbboMax, Inc 2528 Qume Drive, Suite 8, San Jose, California 95131, USA
1 408-573-1898 (Tel). 1 408-573-1858 (Fax). www.abbomax.com info@abbomax.com