



Mouse anti CXCL12 Monoclonal Antibody

Alternative Name(s): nan

Order Information

- **Description:** CXCL12
- **Catalogue:** 605-670
- **Lot:** See label
- **Size:** 100ug/200ul
- **Host:** Mouse
- **Clone:** ZY505
- **Application:** IHC(P), WB
- **Reactivity:** Hu

ANTIGEN PREPARATION

A synthetic peptide of human Claudin 5

BACKGROUND

Stromal cell-derived factor 1, also known as C-X-C motif chemokine 12 (CXCL12), is a chemokine protein. The protein functions as the ligand for the G-protein coupled receptor, chemokine (C-X-C motif) receptor 4, and plays a role in many diverse cellular functions, including embryogenesis, immune surveillance, inflammation response, tissue homeostasis, and tumor growth and metastasis. Mutations in this gene are associated with resistance to human immunodeficiency virus type 1 infections. CXCR7 and its ligand, chemokine CXCL12, were established to be involved in biological behaviors and associated with prognosis in many cancers. CXCL12-CXCR7 axis contributes to the invasive phenotype of pancreatic cancer. During embryonic development, CXCL12 plays a role in cerebellar formation through the migration of neurons.

PURIFICATION

The mouse IgG is purified by Protein A-Affinity Chromatography according to Isotyping

FORMULATION

This affinity purified antibody is supplied in sterile Phosphatebuffered saline (pH7.2) containing antibody stabilizer

SPECIFICITY

This antibody recognizes human CXCL12 protein. The other species are not tested.

STORAGE

The antibodies are stable for 24 months from date of receipt when stored at -20oC to -70oC. The antibodies can be stored at 2oC-8oC for three month without detectable loss of activity. Avoid repeated freezing-thawing cycles.

APPLICATIONS/SUGGESTED WORKING DILUTIONS*

- Western Blot: 0.1-1 µg/ml
- ELISA: 0.01-0.1 µg/ml
- Immunoprecipitation: 2-5 µg/ml
- IHC: 2-10 µg/ml
- Flow cytometry: Not tested
- Molecular Weight: 20.0
- Positive Control: Kidney Tissue
- Cellular Location: Cell Membrane

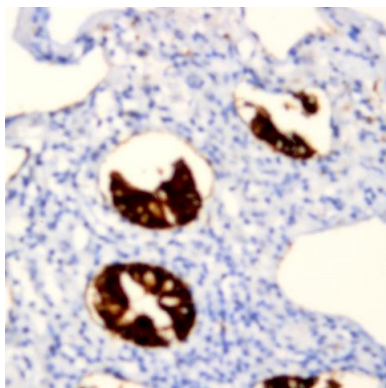
*Optimal dilutions should be determined by researchers for the specific applications.

FOR RESEARCH USE ONLY.

AbboMax, Inc 2528 Qume Drive, Suite 8, San Jose, California 95131, USA
1 408-573-1898 (Tel). 1 408-573-1858 (Fax). www.abbomax.com info@abbomax.com



DATA ATTACHMENTS



Immunohistochemistry: Human kidney tissue (FFPE) stained with Mouse anti-CXCL-12 (clone ZY505) (Cat# 605-670) at 1:200 for 10 min @ RT. Staining of formalin-fixed tissue requires boiling tissue sections in 10 mM Citrate Buffer, pH 6.0 for 10 min followed by cooling at RT for 20 min.

REFERENCES

FOR RESEARCH USE ONLY.

AbboMax, Inc 2528 Qume Drive, Suite 8, San Jose, California 95131, USA
1 408-573-1898 (Tel). 1 408-573-1858 (Fax). www.abbomax.com info@abbomax.com