



## Rat anti CD122(Ms) Monoclonal Antibody

Alternative Name(s): nan

### Order Information

- **Description:** CD122(Ms)
- **Catalogue:** 605-570
- **Lot:** See label
- **Size:** 100ug/200ul
- **Host:** Rat
- **Clone:** TM-beta1
- **Application:** IHC(P), FC
- **Reactivity:** Ms

### **ANTIGEN PREPARATION**

A recombinant protein of human CD122

### **BACKGROUND**

The interleukin 2 receptor is composed of alpha and beta subunits. The beta subunit (CD122) encoded by this gene is very homologous to the human beta subunit and also shows structural similarity to other cytokine receptors. The protein encoded by this gene is a type I membrane protein. IL-2 receptor  $\beta$  chain (IL-2R $\beta$ ) interacts with the CIS, a cytokine-induced SH2-containing protein. Targeting CD122 is the novel approach for clinical optimization of costimulatory blockade strategies in transplantation. Studies show that costimulation-independent T cell alloreactivity relies on signaling through CD122, the shared IL-2 and IL-15 receptor  $\beta$ -chain. Combined costimulatory and CD122 blockade improved survival of transplanted tissue in mice and nonhuman primates by controlling proliferation and effector function of CD8+ T cells. Other studies suggest that the IL2R beta-chain induces growth potential for glandular epithelial cells and an immune-privileged condition mediated by CD25+regulatory-T cells. Frequent and spontaneous proliferation of glandular epithelium and dilated cysts were shown in the uteri of interleukin-2 receptor (IL2R) beta-chain transgenic (Tg2Rbeta) mice.

### **PURIFICATION**

The mouse IgG is purified by Protein A-Affinity Chromatography according to Isotyping

### **FORMULATION**

This affinity purified antibody is supplied in sterile Phosphatebuffered saline (pH7.2) containing antibody stabilizer

### **SPECIFICITY**

This antibody recognizes mouse CD122(Ms) protein. The other species are not tested.

### **STORAGE**

The antibodies are stable for 24 months from date of receipt when stored at  $-20^{\circ}\text{C}$  to  $-70^{\circ}\text{C}$ . The antibodies can be stored at  $2^{\circ}\text{C}$ - $8^{\circ}\text{C}$  for three month without detectable loss of activity. Avoid repeated freezing-thawing cycles.

### **APPLICATIONS/SUGGESTED WORKING DILUTIONS\***

- Western Blot: 0.1-1  $\mu\text{g}/\text{ml}$
- ELISA: 0.01-0.1  $\mu\text{g}/\text{ml}$
- Immunoprecipitation: 2-5  $\mu\text{g}/\text{ml}$
- IHC: 2-10  $\mu\text{g}/\text{ml}$
- Flow cytometry: 0.5-5  $\mu\text{g}/10^6$  cells
- Molecular Weight: 70.0
- Positive Control: Kidney Tissue
- Cellular Location: Cell Membrane

### **FOR RESEARCH USE ONLY.**

AbboMax, Inc 2528 Qume Drive, Suite 8, San Jose, California 95131, USA  
1 408-573-1898 (Tel). 1 408-573-1858 (Fax). [www.abbomax.com](http://www.abbomax.com) [info@abbomax.com](mailto:info@abbomax.com)



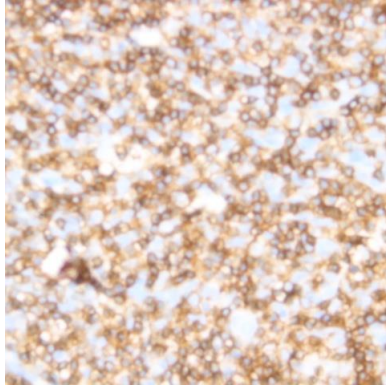
\*Optimal dilutions should be determined by researchers for the specific applications.

**FOR RESEARCH USE ONLY.**

AbboMax, Inc 2528 Qume Drive, Suite 8, San Jose, California 95131, USA  
1 408-573-1898 (Tel). 1 408-573-1858 (Fax). [www.abbomax.com](http://www.abbomax.com) [info@abbomax.com](mailto:info@abbomax.com)



## DATA ATTACHMENTS



Immunohistochemistry: Human Tonsil (FFPE) stained with Mouse anti-CD122 (Cat# 605-570) at 1:200 for 10 min @ RT. Staining of formalin-fixed tissue requires boiling tissue sections in 10 mM Citrate Buffer, pH 6.0 for 10 min followed by cooling at RT for 20 min.

## REFERENCES

### FOR RESEARCH USE ONLY.

AbboMax, Inc 2528 Qume Drive, Suite 8, San Jose, California 95131, USA  
1 408-573-1898 (Tel). 1 408-573-1858 (Fax). [www.abbomax.com](http://www.abbomax.com) [info@abbomax.com](mailto:info@abbomax.com)