



Mouse anti BCL-XL Monoclonal Antibody

Alternative Name(s): nan

Order Information

- **Description:** BCL-XL
- **Catalogue:** 605-530
- **Lot:** See label
- **Size:** 100ug/200ul
- **Host:** Mouse
- **Clone:** ZY457
- **Application:** IHC(P), WB
- **Reactivity:** Hu

ANTIGEN PREPARATION

A synthetic peptide of human BCL-XL

BACKGROUND

B-cell lymphoma-extra large (Bcl-xL) is a transmembrane molecule in the mitochondria. A growing body of evidence supports a role for mitochondria and mitochondria-derived factors in the cell death process. Bcl-xL is capable of preventing cytochrome c release while also significantly inhibiting cell death. Mitochondrial release of factors such as cytochrome c represents a critical step in committing a cell to death, and this release is independent of permeability transition and caspase activation but is inhibited by Bcl-xL. Bcl-XL plays critical role in cancer development and resistance to treatment. Bcl-XL also protects cancer cells from p53-mediated apoptosis.

PURIFICATION

The mouse IgG is purified by Protein A-Affinity Chromatography according to Isotyping

FORMULATION

This affinity purified antibody is supplied in sterile Phosphatebuffered saline (pH7.2) containing antibody stabilizer

SPECIFICITY

This antibody recognizes human BCL-XL protein. The other species are not tested.

STORAGE

The antibodies are stable for 24 months from date of receipt when stored at -20oC to -70oC. The antibodies can be stored at 2oC-8oC for three month without detectable loss of activity. Avoid repeated freezing-thawing cycles.

APPLICATIONS/SUGGESTED WORKING DILUTIONS*

- Western Blot: 0.1-1 µg/ml
- ELISA: 0.01-0.1 µg/ml
- Immunoprecipitation: 2-5 µg/ml
- IHC: 2-10 µg/ml
- Flow cytometry: Not tested
- Molecular Weight: 26.0
- Positive Control: Kidney Tissue
- Cellular Location: Cell Membrane

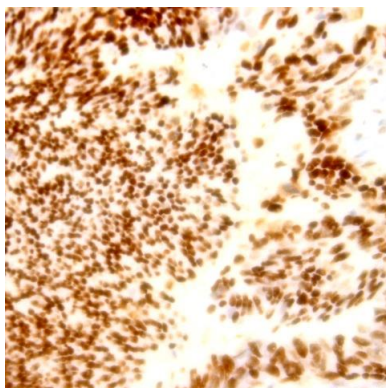
*Optimal dilutions should be determined by researchers for the specific applications.

FOR RESEARCH USE ONLY.

AbboMax, Inc 2528 Qume Drive, Suite 8, San Jose, California 95131, USA
1 408-573-1898 (Tel). 1 408-573-1858 (Fax). www.abbomax.com info@abbomax.com



DATA ATTACHMENTS



Immunohistochemistry: Human breast carcinoma (FFPE) stained with Mouse anti- BCL-XL (Cat# 605-530) at 1:200 for 10 min @ RT. Staining of formalin-fixed tissue requires boiling tissue sections in 10 mM Citrate Buffer, pH 6.0 for 10 min followed by cooling at RT for 20 min.

REFERENCES

FOR RESEARCH USE ONLY.

AbboMax, Inc 2528 Qume Drive, Suite 8, San Jose, California 95131, USA
1 408-573-1898 (Tel). 1 408-573-1858 (Fax). www.abbomax.com info@abbomax.com