



Mouse anti CD5 Monoclonal Antibody

Alternative Name(s): LEU1, T1

Order Information

- **Description:** CD5
- **Catalogue:** 605-430
- **Lot:** See label
- **Size:** 100ug/200ul
- **Host:** Mouse
- **Clone:** UCHT2
- **Application:** IHC(P), FC
- **Reactivity:** Hu

ANTIGEN PREPARATION

A recombinant protein of human CD5

BACKGROUND

CD5, a 67 kD protein, is a member of the scavenger receptor cysteine-rich protein superfamily. CD5 is a good marker for T-cells, although not as sensitive as CD3. Since its discovery, CD5 has been used as a marker to identify T cells, B1-a cells, and B cell chronic lymphocytic leukemia cells. Many studies have described the functional relevance of CD5 as a modulator of T and B cell receptor signaling. In recent years CD5 has emerged as a functional receptor in other areas of the immune system. CD5 was found to promote T cell survival by protecting autoreactive T cell from activation-induced cell death, to promote de novo induction of regulatory T cells in the periphery, to modulate Th17 and Th2 differentiation, and to modulate immune responses by modulating dendritic cell functions. The newly established roles of CD5 in modulating different aspects of immune responses identify this receptor as an immune checkpoint modulator, and therefore it could be used as a target for immune intervention in different pathologies such as cancer, autoimmune diseases or infections

PURIFICATION

The mouse IgG is purified by Protein A-Affinity Chromatography according to Isotyping

FORMULATION

This affinity purified antibody is supplied in sterile Phosphatebuffered saline (pH7.2) containing antibody stabilizer

SPECIFICITY

This antibody recognizes human CD5 protein. The other species are not tested.

STORAGE

The antibodies are stable for 24 months from date of receipt when stored at -20oC to -70oC. The antibodies can be stored at 2oC-8oC for three month without detectable loss of activity. Avoid repeated freezing-thawing cycles.

APPLICATIONS/SUGGESTED WORKING DILUTIONS*

- Western Blot: 0.1-1 µg/ml
- ELISA: 0.01-0.1 µg/ml
- Immunoprecipitation: 2-5 µg/ml
- IHC: 2-10 µg/ml
- Flow cytometry: 0.5-5 µg/10⁶ cells
- Molecular Weight: 62.0
- Positive Control: Kidney Tissue
- Cellular Location: Cell Membrane

*Optimal dilutions should be determined by researchers for the specific applications.

FOR RESEARCH USE ONLY.

AbboMax, Inc 2528 Qume Drive, Suite 8, San Jose, California 95131, USA
1 408-573-1898 (Tel). 1 408-573-1858 (Fax). www.abbomax.com info@abbomax.com

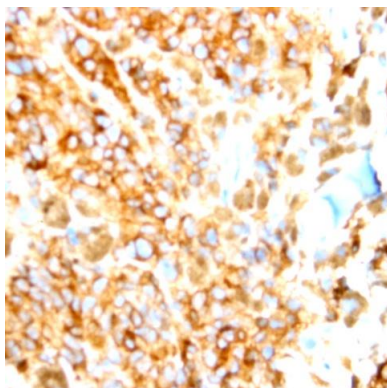


FOR RESEARCH USE ONLY.

AbboMax, Inc 2528 Qume Drive, Suite 8, San Jose, California 95131, USA
1 408-573-1898 (Tel). 1 408-573-1858 (Fax). www.abbomax.com info@abbomax.com



DATA ATTACHMENTS



Immunohistochemistry: Human lymphoma (FFPE) stained with Mouse anti-CD5 (Cat# 605-430) at 1:200 for 10 min @ RT. Staining of formalin-fixed tissue requires boiling tissue sections in 10 mM Citrate Buffer, pH 6.0 for 10 min followed by cooling at RT for 20 min.

REFERENCES

FOR RESEARCH USE ONLY.

AbboMax, Inc 2528 Qume Drive, Suite 8, San Jose, California 95131, USA
1 408-573-1898 (Tel). 1 408-573-1858 (Fax). www.abbomax.com info@abbomax.com