



## Mouse anti CD45RA Monoclonal Antibody

Alternative Name(s): LCA; LY5; B220; CD45; L-CA; T200; CD45R; GP180

### Order Information

- **Description:** CD45RA
- **Catalogue:** 605-410
- **Lot:** See label
- **Size:** 100ug/200ul
- **Host:** Mouse
- **Clone:** HI100
- **Application:** IHC(P), FC
- **Reactivity:** Hu

### **ANTIGEN PREPARATION**

Enriched cell membrane of human PBMC

### **BACKGROUND**

CD45 leucocyte common antigen (LCA) belongs to the family of membrane glycoproteins expressed on hematopoietic cell lines but absent on non-hematopoietic cell lines, normal and malignant non-hematopoietic tissues. This protein is a member of the protein tyrosine phosphatase (PTP) family. CD45 can exist in at least nine different isoforms resulting from tissue-specific alternative RNA splicing of exons 4-7 of a single gene coding for the various N-terminal peptide segments. A point mutation within CD45 exon A is the cause of variant CD45RA splicing in humans. CD45 isoforms show cell-type and differentiation-stage specific expression, a pattern which is quite well conserved in mammals. CD45RA is located on naïve T cells and when they are activated or transformed into memory cells, CD45RA is lost. Naive T lymphocytes are typically positive for CD45RA. Tregs, like other T cells, can be divided into CD45RA+ naïve and CD45RA- memory subtypes. CD45RA is a 220 kDa molecule, a single chain type I glycoprotein.

### **PURIFICATION**

The mouse IgG is purified by Protein A-Affinity Chromatography according to Isotyping

### **FORMULATION**

This affinity purified antibody is supplied in sterile Phosphatebuffered saline (pH7.2) containing antibody stabilizer

### **SPECIFICITY**

This antibody recognizes human CD45RA protein. The other species are not tested.

### **STORAGE**

The antibodies are stable for 24 months from date of receipt when stored at -20oC to -70oC. The antibodies can be stored at 2oC-8oC for three month without detectable loss of activity. Avoid repeated freezing-thawing cycles.

### **APPLICATIONS/SUGGESTED WORKING DILUTIONS\***

- Western Blot: 0.1-1 µg/ml
- ELISA: 0.01-0.1 µg/ml
- Immunoprecipitation: 2-5 µg/ml
- IHC: 2-10 µg/ml
- Flow cytometry: 0.5-5 µg/10<sup>6</sup> cells
- Molecular Weight: 205-220
- Positive Control: Kidney Tissue
- Cellular Location: Cell Membrane

\*Optimal dilutions should be determined by researchers for the specific applications.

### **FOR RESEARCH USE ONLY.**

AbboMax, Inc 2528 Qume Drive, Suite 8, San Jose, California 95131, USA  
1 408-573-1898 (Tel). 1 408-573-1858 (Fax). [www.abbomax.com](http://www.abbomax.com) [info@abbomax.com](mailto:info@abbomax.com)

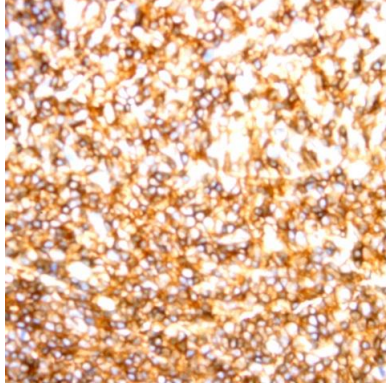


**FOR RESEARCH USE ONLY.**

AbboMax, Inc 2528 Qume Drive, Suite 8, San Jose, California 95131, USA  
1 408-573-1898 (Tel). 1 408-573-1858 (Fax). [www.abbomax.com](http://www.abbomax.com) [info@abbomax.com](mailto:info@abbomax.com)



## DATA ATTACHMENTS



Immunohistochemistry: Human Tonsil (FFPE) stained with Mouse anti-CD45RA (Cat# 605-410) at 1:200 for 10 min @ RT. Staining of formalin-fixed tissue requires boiling tissue sections in 10 mM Citrate Buffer, pH 6.0 for 10 min followed by cooling at RT for 20 min.

## REFERENCES

### FOR RESEARCH USE ONLY.

AbboMax, Inc 2528 Qume Drive, Suite 8, San Jose, California 95131, USA  
1 408-573-1898 (Tel). 1 408-573-1858 (Fax). [www.abbomax.com](http://www.abbomax.com) [info@abbomax.com](mailto:info@abbomax.com)