



Mouse anti CD20 Monoclonal Antibody

Alternative Name(s) : MS4A1, CD20, CD20 antigen, CD20 receptor, B-Lymphocyte cell-surface antigen B1

Order Information

- **Description:** CD20
- **Catalogue:** 605-381
- **Lot:** See label
- **Size:** 100ug/200ul
- **Host:** Mouse
- **Clone:** ZY492
- **Application:** IHC(P), FC
- **Reactivity:** Hu

ANTIGEN PREPARATION

A recombinant protein of human CD20

BACKGROUND

CD20, a non-glycosylated protein, belongs to a member of the membrane-spanning 4A gene family. The molecular weight is at a range of ~34-37kDa depending on the degree of the protein phosphorylation. The CD20 antigen is present on human pre B lymphocytes and B lymphocytes at all stages of maturation. Thus, it plays an important role in the development and differentiation of B-cells into plasma cells. The CD20 molecule is involved in B-cell activation. Combination of chemo and humanized CD20 antibodies has been reported in clinical study of lymphoma diseases. Selective depletion of CD20+ B cells by anti-CD20 monoclonal antibodies as monotherapy in multiple sclerosis (MS) profoundly suppresses acute inflammatory disease activity and signifies an important advance in the treatment of relapsing-remitting MS. In the past years, development of monoclonal anti-CD20 antibodies changed drastically the treatment for non-Hodgkin lymphomas in which CD20 is expressed.

PURIFICATION

The mouse IgG is purified by Protein A-Affinity Chromatography according to Isotyping

FORMULATION

This affinity purified antibody is supplied in sterile Phosphatebuffered saline (pH7.2) containing antibody stabilizer

SPECIFICITY

This antibody recognizes human CD20 protein. The other species are not tested.

STORAGE

The antibodies are stable for 24 months from date of receipt when stored at -20oC to -70oC. The antibodies can be stored at 2oC-8oC for three month without detectable loss of activity. Avoid repeated freezing-thawing cycles.

APPLICATIONS/SUGGESTED WORKING DILUTIONS*

- Western Blot: 0.1-1 µg/ml
- ELISA: 0.01-0.1 µg/ml
- Immunoprecipitation: 2-5 µg/ml
- IHC: 2-10 µg/ml
- Flow cytometry: 0.5-5 µg/10⁶ cells
- Molecular Weight: 35.0
- Positive Control: Kidney Tissue
- Cellular Location: Cell Membrane

*Optimal dilutions should be determined by researchers for the specific applications.

FOR RESEARCH USE ONLY.

AbboMax, Inc 2528 Qume Drive, Suite 8, San Jose, California 95131, USA
1 408-573-1898 (Tel). 1 408-573-1858 (Fax). www.abbomax.com info@abbomax.com

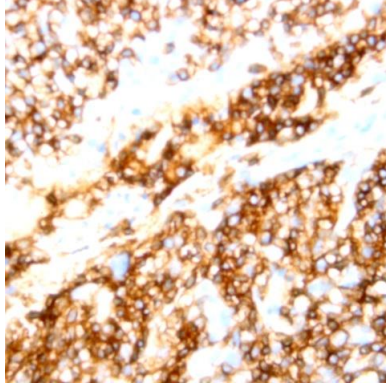


FOR RESEARCH USE ONLY.

AbboMax, Inc 2528 Qume Drive, Suite 8, San Jose, California 95131, USA
1 408-573-1898 (Tel). 1 408-573-1858 (Fax). www.abbomax.com info@abbomax.com



DATA ATTACHMENTS



Immunohistochemistry: Human Tonsil (FFPE) stained with Mouse anti- CD20 (clone ZY459) (Cat# 605-381) at 1:200 for 10 min @ RT. Staining of formalin-fixed tissue requires boiling tissue sections in 10 mM Citrate Buffer, pH 6.0 for 10 min followed by cooling at RT for 20 min.

REFERENCES

FOR RESEARCH USE ONLY.

AbboMax, Inc 2528 Qume Drive, Suite 8, San Jose, California 95131, USA
1 408-573-1898 (Tel). 1 408-573-1858 (Fax). www.abbomax.com info@abbomax.com