



## Mouse anti CD20 Monoclonal Antibody

Alternative Name(s) : MS4A1, CD20, CD20 antigen, CD20 receptor, B-Lymphocyte cell-surface antigen B1

### Order Information

- **Description:** CD20
- **Catalogue:** 605-370
- **Lot:** See label
- **Size:** 100ug/200ul
- **Host:** Mouse
- **Clone:** 13.6E12
- **Application:** IHC(P), FC
- **Reactivity:** Hu

### **ANTIGEN PREPARATION**

A recombinant protein of human CD20

### **BACKGROUND**

CD20, a non-glycosylated protein, belongs to a member of the membrane-spanning 4A gene family. The molecular weight is at a range of ~34-37kDa depending on the degree of the protein phosphorylation. The CD20 antigen is present on human pre B lymphocytes and B lymphocytes at all stages of maturation. Thus, it plays an important role in the development and differentiation of B-cells into plasma cells. The CD20 molecule is involved in B-cell activation. Combination of chemo and humanized CD20 antibodies has been reported in clinical study of lymphoma diseases. Selective depletion of CD20+ B cells by anti-CD20 monoclonal antibodies as monotherapy in multiple sclerosis (MS) profoundly suppresses acute inflammatory disease activity and signifies an important advance in the treatment of relapsing-remitting MS. In the past years, development of monoclonal anti-CD20 antibodies changed drastically the treatment for non-Hodgkin lymphomas in which CD20 is expressed.

### **PURIFICATION**

The mouse IgG is purified by Protein A-Affinity Chromatography according to Isotyping

### **FORMULATION**

This affinity purified antibody is supplied in sterile Phosphatebuffered saline (pH7.2) containing antibody stabilizer

### **SPECIFICITY**

This antibody recognizes human CD20 protein. The other species are not tested.

### **STORAGE**

The antibodies are stable for 24 months from date of receipt when stored at -20oC to -70oC. The antibodies can be stored at 2oC-8oC for three month without detectable loss of activity. Avoid repeated freezing-thawing cycles.

### **APPLICATIONS/SUGGESTED WORKING DILUTIONS\***

- Western Blot: 0.1-1 µg/ml
- ELISA: 0.01-0.1 µg/ml
- Immunoprecipitation: 2-5 µg/ml
- IHC: 2-10 µg/ml
- Flow cytometry: Not tested
- Molecular Weight: 35.0
- Positive Control: Kidney Tissue
- Cellular Location: Cell Membrane

\*Optimal dilutions should be determined by researchers for the specific applications.

### **FOR RESEARCH USE ONLY.**

AbboMax, Inc 2528 Qume Drive, Suite 8, San Jose, California 95131, USA  
1 408-573-1898 (Tel). 1 408-573-1858 (Fax). [www.abbomax.com](http://www.abbomax.com) [info@abbomax.com](mailto:info@abbomax.com)

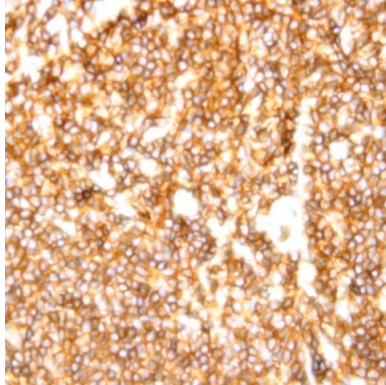


**FOR RESEARCH USE ONLY.**

AbboMax, Inc 2528 Qume Drive, Suite 8, San Jose, California 95131, USA  
1 408-573-1898 (Tel). 1 408-573-1858 (Fax). [www.abbomax.com](http://www.abbomax.com) [info@abbomax.com](mailto:info@abbomax.com)



## DATA ATTACHMENTS



Immunohistochemistry: Human Tonsil (FFPE) stained with Mouse anti- CD20 (Clone ZY492) (Cat# 605-370) at 1:200 for 10 min @ RT. Staining of formalin-fixed tissue requires boiling tissue sections in 10 mM Citrate Buffer, pH 6.0 for 10 min followed by cooling at RT for 20 min.

## REFERENCES

### FOR RESEARCH USE ONLY.

AbboMax, Inc 2528 Qume Drive, Suite 8, San Jose, California 95131, USA  
1 408-573-1898 (Tel). 1 408-573-1858 (Fax). [www.abbomax.com](http://www.abbomax.com) [info@abbomax.com](mailto:info@abbomax.com)