



Mouse anti CD235a Monoclonal Antibody

Alternative Name(s): Glycophorin A (MNS blood group), GYPA

Order Information

- **Description:** CD235a
- **Catalogue:** 604-370
- **Lot:** See label
- **Size:** 100ug/200ul
- **Host:** Mouse
- **Clone:** 10F7MN
- **Application:** IHC(P), FC
- **Reactivity:** Hu

ANTIGEN PREPARATION

A recombinant protein of human CD235a

BACKGROUND

CD235a (Glycophorin A, GYPA) is member of the glycophorin A family. It is a 10 kD type I sialoglycoprotein. Glycophorins A (GYPA) and B (GYPB) are major sialoglycoproteins of the human erythrocyte membrane which carries the antigenic determinants for the MN and Ss blood groups. CD235a is expressed by erythrocytes and erythroid precursors. The human MN blood group antigens are isoforms of glycophorin A (GPA) encoded by the gene, GYPA, and are the most abundant erythrocyte sialoglycoproteins. The distribution of MN antigens has been widely studied in human populations yet the evolutionary and/or demographic factors affecting population variation remain elusive. While the primary function of GPA is yet to be discovered, it serves as the major binding site for the 175-kD erythrocyte-binding antigen (EB-175) of the malarial parasite, Plasmodium falciparum. More specifically, exon two of GYPA encodes the receptor-binding ligand to which P. falciparum binds. Several other viruses bind to CD235a

PURIFICATION

The Mouse IgG is purified by Affinity Purification

FORMULATION

This affinity purified antibody is supplied in sterile Phosphatebuffered saline (pH7.2) containing antibody stabilizer

SPECIFICITY

This antibody recognizes human CD235a protein. The other species are not tested.

STORAGE

The antibodies are stable for 24 months from date of receipt when stored at -20oC to -70oC. The antibodies can be stored at 2oC-8oC for three month without detectable loss of activity. Avoid repeated freezing-thawing cycles.

APPLICATIONS/SUGGESTED WORKING DILUTIONS*

- Western Blot: 0.1-1 µg/ml
- ELISA: 0.01-0.1 µg/ml
- Immunoprecipitation: 2-5 µg/ml
- IHC: 2-10 µg/ml
- Flow cytometry: 0.5-5 µg/106 cells
- Molecular Weight: 10.0
- Positive Control: Kidney Tissue
- Cellular Location: Cell Membrane

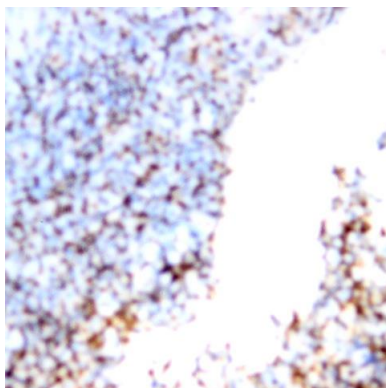
*Optimal dilutions should be determined by researchers for the specific applications.

FOR RESEARCH USE ONLY.

AbboMax, Inc 2528 Qume Drive, Suite 8, San Jose, California 95131, USA
1 408-573-1898 (Tel). 1 408-573-1858 (Fax). www.abbomax.com info@abbomax.com



DATA ATTACHMENTS



Immunohistochemistry: Human Tonsil (FFPE) stained with Mouse anti- CD235a (Cat#604-370) at 1:200 for 10 min @ RT. Staining of formalin-fixed tissue requires boiling tissue sections in 10 mM Citrate Buffer, pH 6.0 for 10 min followed by cooling at RT for 20 min.

REFERENCES

Palacajornsuk P. 2006. Immunohematology 22:171.

FOR RESEARCH USE ONLY.

AbboMax, Inc 2528 Qume Drive, Suite 8, San Jose, California 95131, USA
1 408-573-1898 (Tel). 1 408-573-1858 (Fax). www.abbomax.com info@abbomax.com