



Mouse anti Synaptophysin Monoclonal Antibody

Alternative Name(s): SYP

Order Information

- **Description:** Synaptophysin
- **Catalogue:** 604-310
- **Lot:** See label
- **Size:** 100ug/200ul
- **Host:** Mouse
- **Clone:** SYP
- **Application:** IHC(P), WB
- **Reactivity:** Hu

ANTIGEN PREPARATION

A recombinant protein of human Synaptophysin

BACKGROUND

Synaptophysin, also known as major synaptic vesicle protein P38, is encoded by the SYP gene in humans and is located on the short arm of the X chromosome. Synaptophysin is located in neuroendocrine cells as well as all neurons in the CNS that participate in synaptic transmission. It is a 38 kD protein that contains four transmembrane domains. Synaptophysin is a synaptic vesicle glycoprotein, and interacts with synaptobrevin. It has been implicated in X-linked mental retardation and can be used as a specific marker for cells of the adrenal medulla and pancreatic islets. As such, it can be used to identify tumors that are derived from those cells, including neuroblastoma, retinoblastoma, medulloblastoma, and others.

PURIFICATION

The Mouse IgG is purified by Affinity Purification

FORMULATION

This affinity purified antibody is supplied in sterile Phosphatebuffered saline (pH7.2) containing antibody stabilizer

SPECIFICITY

This antibody recognizes human Synaptophysin protein. The other species are not tested.

STORAGE

The antibodies are stable for 24 months from date of receipt when stored at -20oC to -70oC. The antibodies can be stored at 2oC-8oC for three month without detectable loss of activity. Avoid repeated freezing-thawing cycles.

APPLICATIONS/SUGGESTED WORKING DILUTIONS*

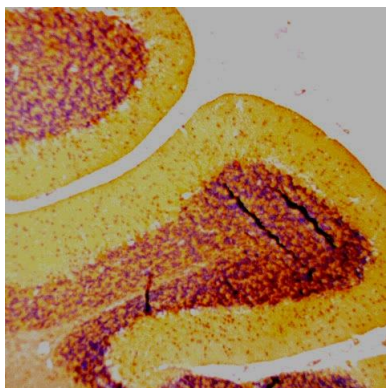
- Western Blot: 0.1-1 µg/ml
- ELISA: 0.01-0.1 µg/ml
- Immunoprecipitation: 2-5 µg/ml
- IHC: 2-10 µg/ml
- Flow cytometry: Not tested
- Molecular Weight: 38.0
- Positive Control: Kidney Tissue
- Cellular Location: Cell Membrane

*Optimal dilutions should be determined by researchers for the specific applications.

FOR RESEARCH USE ONLY.

AbboMax, Inc 2528 Qume Drive, Suite 8, San Jose, California 95131, USA
1 408-573-1898 (Tel). 1 408-573-1858 (Fax). www.abbomax.com info@abbomax.com

DATA ATTACHMENTS



Immunohistochemistry: Human brain tissue (FFPE) stained with Mouse anti-Synaptophysin antibody (Cat# 604-310) at 1:200 for 10 min @ RT. Staining of formalin-fixed tissue requires boiling tissue sections in 10 mM Citrate Buffer, pH 6.0 for 10 min followed by cooling at RT for 20 min.

REFERENCES

Honer WG, et al. 1997. Neuroscience. 78:99-110

FOR RESEARCH USE ONLY.

AbboMax, Inc 2528 Qume Drive, Suite 8, San Jose, California 95131, USA
1 408-573-1898 (Tel). 1 408-573-1858 (Fax). www.abbomax.com info@abbomax.com