



Mouse anti CD22 Monoclonal Antibody

Alternative Name(s): SIGLEC2; SIGLEC-2

Order Information

- **Description:** CD22
- **Catalogue:** 604-171
- **Lot:** See label
- **Size:** 100ug/200ul
- **Host:** Mouse
- **Clone:** RFB4
- **Application:** IHC(P), FC
- **Reactivity:** Hu

ANTIGEN PREPARATION

A recombinant protein of CD22 protein

BACKGROUND

CD22, a member of the immunoglobulin superfamily, is a B-cell transmembrane glycoprotein that acts as an accessory-signaling component of the B-cell antigen receptor (BCR). It is found on the surface of mature B cells and to a lesser extent on some immature B cells. CD22 is a B cell-restricted coreceptor that gets rapidly tyrosyl-phosphorylated and recruits various signaling molecules to the membrane following BCR ligation. Although CD22 contains three immunoreceptor tyrosine-based inhibitory motifs (ITIMs), only the two carboxyl-terminal ITIM tyrosines are required for efficient recruitment of the SHP-1 phosphatase after BCR ligation. Furthermore, Grb2 is inducibly recruited to CD22 in human and murine B cells.

A number of genetic variants are present in CD22, and CD22 could be considered a candidate for the susceptibility genes to autoimmune diseases.

PURIFICATION

The Mouse IgG is purified by Affinity Purification

FORMULATION

This affinity purified antibody is supplied in sterile Phosphatebuffered saline (pH7.2) containing antibody stabilizer

SPECIFICITY

This antibody recognizes human CD22 protein. The other species are not tested.

STORAGE

The antibodies are stable for 24 months from date of receipt when stored at -20°C to -70°C . The antibodies can be stored at 2°C - 8°C for three month without detectable loss of activity. Avoid repeated freezing-thawing cycles.

APPLICATIONS/SUGGESTED WORKING DILUTIONS*

- Western Blot: 0.1-1 $\mu\text{g/ml}$
- ELISA: 0.01-0.1 $\mu\text{g/ml}$
- Immunoprecipitation: 2-5 $\mu\text{g/ml}$
- IHC: 2-10 $\mu\text{g/ml}$
- Flow cytometry: 0.5-5 $\mu\text{g}/10^6$ cells
- Molecular Weight: 130.0
- Positive Control: Kidney Tissue
- Cellular Location: Cell Membrane

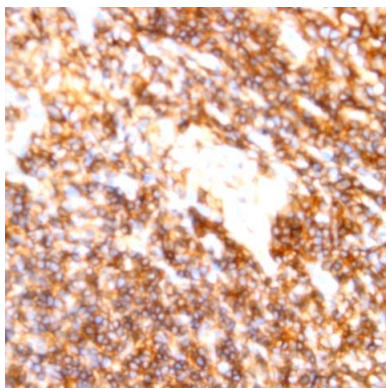
*Optimal dilutions should be determined by researchers for the specific applications.

FOR RESEARCH USE ONLY.

AbboMax, Inc 2528 Qume Drive, Suite 8, San Jose, California 95131, USA
1 408-573-1898 (Tel). 1 408-573-1858 (Fax). www.abbomax.com info@abbomax.com



DATA ATTACHMENTS



Immunohistochemistry: Human Tonsil (FFPE) stained with Mouse anti-CD22 (Clone RFB4) (Cat# 604-171) at 1:200 for 10 min @ RT. Staining of formalin-fixed tissue requires boiling tissue sections in 10 mM Citrate Buffer, pH 6.0 for 10 min followed by cooling at RT for 20 min.

REFERENCES

FOR RESEARCH USE ONLY.

AbboMax, Inc 2528 Qume Drive, Suite 8, San Jose, California 95131, USA
1 408-573-1898 (Tel). 1 408-573-1858 (Fax). www.abbomax.com info@abbomax.com