



## Mouse anti Biotin Monoclonal Antibody

Alternative Name(s): Biotin

### Order Information

- **Description:** Biotin
- **Catalogue:** 604-100
- **Lot:** See label
- **Size:** 100ug/200ul
- **Host:** Mouse
- **Clone:** Z021
- **Application:** IHC(P), WB, ELISA, FC
- **Reactivity:** nan

### **ANTIGEN PREPARATION**

A chemical linked Biotin

### **BACKGROUND**

Biotin is a water-soluble vitamin that serves as an essential coenzyme for five carboxylases in mammals. Biotin-dependent carboxylases catalyze the fixation of bicarbonate in organic acids and play crucial roles in the metabolism of fatty acids, amino acids and glucose. Carboxylase activities decrease substantially in response to biotin deficiency. Biotin is also covalently attached to histones; biotinylated histones are enriched in repeat regions in the human genome and appear to play a role in transcriptional repression of genes and genome stability. In some applications, localization of biotinylated probes with avidin produces unacceptably high background staining. Anti-biotin antibody may be substituted to decrease this noise.

### **PURIFICATION**

The Mouse IgG is purified by Affinity Purification

### **FORMULATION**

This affinity purified antibody is supplied in sterile Phosphatebuffered saline (pH7.2) containing antibody stabilizer

### **SPECIFICITY**

This antibody recognizes biotin compound.

### **STORAGE**

The antibodies are stable for 24 months from date of receipt when stored at  $-20^{\circ}\text{C}$  to  $-70^{\circ}\text{C}$ . The antibodies can be stored at  $2^{\circ}\text{C}$ - $8^{\circ}\text{C}$  for three month without detectable loss of activity. Avoid repeated freezing-thawing cycles.

### **APPLICATIONS/SUGGESTED WORKING DILUTIONS\***

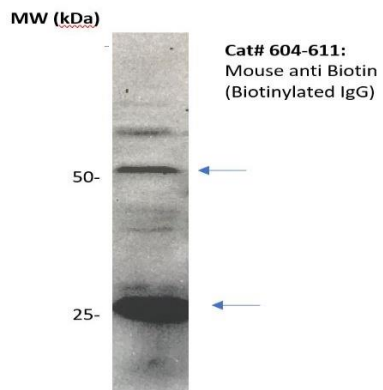
- Western Blot: 0.1-1  $\mu\text{g/ml}$
- ELISA: 0.01-0.1  $\mu\text{g/ml}$
- Immunoprecipitation: 2-5  $\mu\text{g/ml}$
- IHC: 2-10  $\mu\text{g/ml}$
- Flow cytometry: Not tested
- Molecular Weight: 244.0
- Positive Control: Kidney Tissue
- Cellular Location: Cell Membrane

\*Optimal dilutions should be determined by researchers for the specific applications.

### **FOR RESEARCH USE ONLY.**

AbboMax, Inc 2528 Qume Drive, Suite 8, San Jose, California 95131, USA  
1 408-573-1898 (Tel). 1 408-573-1858 (Fax). [www.abbomax.com](http://www.abbomax.com) [info@abbomax.com](mailto:info@abbomax.com)

## DATA ATTACHMENTS



Western Blot: The biotinylated IgG was resolved onto 12% SDS-PAGE, transferred onto NC membrane, and detected by Mouse anti-Biotin (Cat# 604-100) at 1:1000. Observed two major immunoreactive bands at molecular weight 50kDa and 25 kDa.

## REFERENCES

### FOR RESEARCH USE ONLY.