



Mouse anti CD25(Ms) Monoclonal Antibody

Alternative Name(s): IL2RA; CD25; IDDM10; IL2R; TCGFR

Order Information

- **Description:** CD25/IL-2R
- **Catalogue:** 603-961
- **Lot:** See label
- **Size:** 100ug/200ul
- **Host:** Mouse
- **Clone:** PC61.5
- **Application:** IHC(P), FC
- **Reactivity:** Hu

ANTIGEN PREPARATION

A recombinant protein of full length human CD25

BACKGROUND

The IL2 receptor (IL2R) exists in three alternative forms made up from the individual components of CD25, CD122, and CD132. CD25 represents the low affinity alpha chain of the IL2R, a type I transmembrane glycoprotein containing two CCP domains. It is rich in O linked carbohydrates and has a short cytoplasmic tail. CD25 is expressed on activated T cells, B cells, NK cells and monocytes of all mouse strains tested. It is transiently expressed at a low level during B cell development in bone marrow on the CD45R/B220 low TdT- sIg- pre-B II and CD45R/B220low TdT- sIgM+sIgD- immature B cells, but not on the CD45R/B220 low TdT+ sIg- pro-B/pre B I stage nor on CD45R/B220high TdT- sIgM+sIgD+ mature B cells. CD25 is expressed at a higher level during very early T cell development in fetal and adult thymus. CD25 expression is a common denominator of a specific immunomodulatory B-cell subset ready to proliferate upon IL-2 stimulation.

PURIFICATION

The mouse IgG is purified by Protein A-Affinity Chromatography according to Isotyping

FORMULATION

This affinity purified antibody is supplied in sterile Phosphatebuffered saline (pH7.2) containing antibody stabilizer

SPECIFICITY

This antibody recognizes human CD25/IL-2R protein. The other species are not tested.

STORAGE

The antibodies are stable for 24 months from date of receipt when stored at -20oC to -70oC. The antibodies can be stored at 2oC-8oC for three month without detectable loss of activity. Avoid repeated freezing-thawing cycles.

APPLICATIONS/SUGGESTED WORKING DILUTIONS*

- Western Blot: 0.1-1 µg/ml
- ELISA: 0.01-0.1 µg/ml
- Immunoprecipitation: 2-5 µg/ml
- IHC: 2-10 µg/ml
- Flow cytometry: 0.5-5 µg/106 cells
- Molecular Weight: 55.0
- Positive Control: Kidney Tissue
- Cellular Location: Cell Membrane

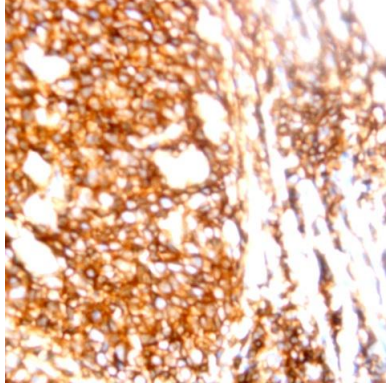
*Optimal dilutions should be determined by researchers for the specific applications.

FOR RESEARCH USE ONLY.

AbboMax, Inc 2528 Qume Drive, Suite 8, San Jose, California 95131, USA
1 408-573-1898 (Tel). 1 408-573-1858 (Fax). www.abbomax.com info@abbomax.com



DATA ATTACHMENTS



Immunohistochemistry: Human Tonsil (FFPE) stained with Mouse anti-Cd25/IL-2R (Cat#603-961) at 1:200 for 10 min @ RT. Staining of formalin-fixed tissue requires boiling tissue sections in 10 mM Citrate Buffer, pH 6.0 for 10 min followed by cooling at RT for 20 min.

REFERENCES

FOR RESEARCH USE ONLY.

AbboMax, Inc 2528 Qume Drive, Suite 8, San Jose, California 95131, USA
1 408-573-1898 (Tel). 1 408-573-1858 (Fax). www.abbomax.com info@abbomax.com