



Mouse anti Vimentin Monoclonal Antibody

Alternative Name(s): VIM, Vimentin; CTRCT30; HEL113

Order Information

- **Description:** Vimentin
- **Catalogue:** 603-890
- **Lot:** See label
- **Size:** 100ug/200ul
- **Host:** Mouse
- **Clone:** V9B1
- **Application:** IHC(P), WB
- **Reactivity:** Hu

ANTIGEN PREPARATION

The recombinant protein of human Vimentin.

BACKGROUND

Vimentin belongs to the intermediate filament family (IF). Three major cytoskeletal filaments (IF along with microtubules and actin microfilaments) make up the cytoskeleton. Vimentin is the most widely expressed IF protein component. It is responsible for maintaining cell shape, integrity of the cytoplasm, and stabilizing cytoskeletal interactions. It is also involved in the immune response, and controls the transport of low-density lipoprotein (LDL)-derived cholesterol from a lysosome to the site of esterification. It functions as an organizer of a number of critical proteins involved in attachment, migration, and cell signaling. Vimentin can be phosphorylated by PAK (p21-activated kinase) at the S25, 38, 50, 65 and 72 at N-terminus. Mutations in this gene may cause a dominant, pulverulent cataract.

PURIFICATION

The mouse IgG is purified by Protein A-Affinity Chromatography according to Isotyping

FORMULATION

This affinity purified antibody is supplied in sterile Phosphatebuffered saline (pH7.2) containing antibody stabilizer

SPECIFICITY

This antibody recognizes human Vimentin protein. The other species are not tested.

STORAGE

The antibodies are stable for 24 months from date of receipt when stored at -20°C to -70°C . The antibodies can be stored at 2°C - 8°C for three month without detectable loss of activity. Avoid repeated freezing-thawing cycles.

APPLICATIONS/SUGGESTED WORKING DILUTIONS*

- Western Blot: 0.1-1 $\mu\text{g/ml}$
- ELISA: 0.01-0.1 $\mu\text{g/ml}$
- Immunoprecipitation: 2-5 $\mu\text{g/ml}$
- IHC: 2-10 $\mu\text{g/ml}$
- Flow cytometry: Not tested
- Molecular Weight: 57.0
- Positive Control: Kidney Tissue
- Cellular Location: Cell Membrane

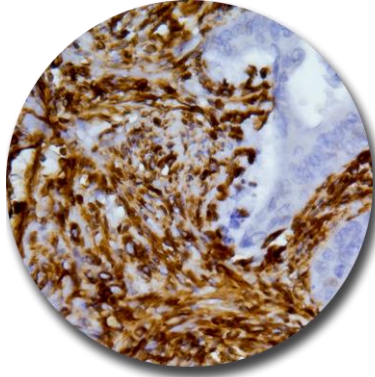
*Optimal dilutions should be determined by researchers for the specific applications.

FOR RESEARCH USE ONLY.

AbboMax, Inc 2528 Qume Drive, Suite 8, San Jose, California 95131, USA
1 408-573-1898 (Tel). 1 408-573-1858 (Fax). www.abbomax.com info@abbomax.com



DATA ATTACHMENTS



Immunohistochemistry: Human colob carcinoma (FFPE) stained with Mouse anti-Vimentin (Cat# 603-890) at 1:200 for 10 min @ RT. Staining of formalin-fixed tissue requires boiling tissue sections in 10 mM Citrate Buffer, pH 6.0 for 10 min followed by cooling at RT for 20 min.

REFERENCES

FOR RESEARCH USE ONLY.

AbboMax, Inc 2528 Qume Drive, Suite 8, San Jose, California 95131, USA
1 408-573-1898 (Tel). 1 408-573-1858 (Fax). www.abbomax.com info@abbomax.com