



Mouse anti pTEN Monoclonal Antibody

Alternative Name(s): Phosphatase and tensin homolog; PTEN; MMAC1

Order Information

- **Description:** pTEN
- **Catalogue:** 602-970
- **Lot:** See label
- **Size:** 100ug/200ul
- **Host:** Mouse
- **Clone:** M10_KZ
- **Application:** IHC(P), WB
- **Reactivity:** Hu, Ms, Rt

ANTIGEN PREPARATION

A synthetic peptide derived from C-terminus of human pTEN protein.

BACKGROUND

The phosphatase and tensin homologue (PTEN) tumor suppressor is a phosphatidylinositol D3-phosphatase that contains the catalytic signature motif (HCXXGXXRS/T) found in all members of the protein tyrosine phosphatase family. PTEN is mutated in a wide range of cancers. In vitro, the recombinant PTEN can be regulated by phosphorylation on multiple serine and threonine residues in its C-terminus, such as CK2, GSK3beta at Ser-362, 370 and 385. It antagonizes signal transduction downstream of PI-3 kinases affecting cell proliferation, apoptosis and migration. Loss-of-function mutations in the PTEN gene lead to constitutive activation of multiple signaling pathways.

PURIFICATION

The mouse IgG is purified by Protein A-Affinity Chromatography according to Isotyping

FORMULATION

This affinity purified antibody is supplied in sterile Phosphate buffered saline (pH7.2) containing antibody stabilizer

SPECIFICITY

This antibody recognizes IRAK-4(pT345) with a phosphorylated site at Threonine 345. It does not cross-react with non-phosphospecific peptide.

STORAGE

The antibodies are stable for 24 months from date of receipt when stored at -20oC to -70oC. The antibodies can be stored at 2oC-8oC for three months without detectable loss of activity. Avoid repeated freezing-thawing cycles.

APPLICATIONS/SUGGESTED WORKING DILUTIONS*

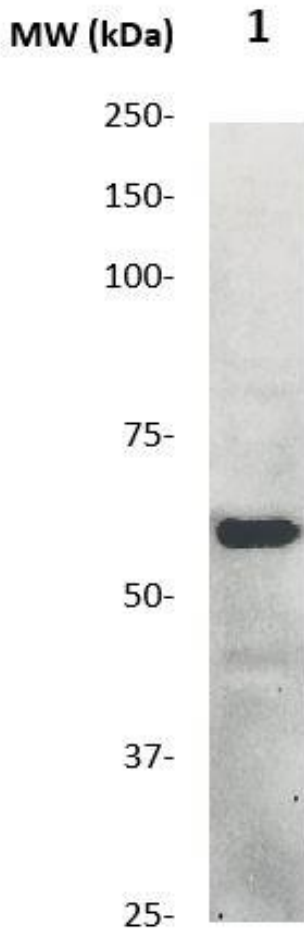
- Western Blot: 0.1-1 µg/ml
- ELISA: 0.01-0.1 µg/ml
- Immunoprecipitation: 2-5 µg/ml
- IHC: 2-10 µg/ml
- Flow cytometry: Not tested
- Molecular Weight: 50.0
- Positive Control: Kidney Tissue
- Cellular Location: Cell Membrane

*Optimal dilutions should be determined by researchers for the specific applications.

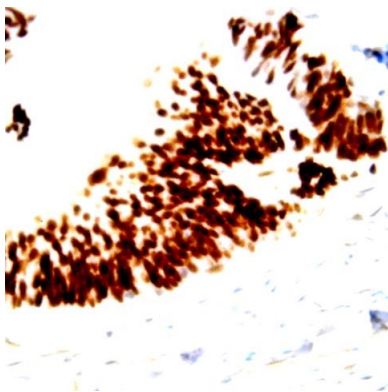
FOR RESEARCH USE ONLY.

AbboMax, Inc 2528 Qume Drive, Suite 8, San Jose, California 95131, USA
1 408-573-1898 (Tel). 1 408-573-1858 (Fax). www.abbomax.com info@abbomax.com

DATA ATTACHMENTS



Western Blot: The cell lysates derived from mouse brain were immunoprobed by Mouse anti PTEN(Cat#602-970) antibody at 1:1000. An immunoreactive band is observed around ~50 kDa.



Immunohistochemistry: Human prostate tissue was stained with Mouse anti-PTEN antibody, Cat# 602-970 at 1:200 for 10 min @ RT. Staining of formalin-fixed tissue requires boiling tissue sections in 10 mM Citrate Buffer, pH 6.0 for 10 min followed by cooling at RT for 20 min.

REFERENCES

FOR RESEARCH USE ONLY.