



Rabbit anti ER81 Polyclonal Antibody

Alternative Name(s): ets variant gene 1; Etsrp81; ets related protein 81

Order Information

- **Description:** ER81
- **Catalogue:** 602-930
- **Lot:** See label
- **Size:** 100ug/200ul
- **Host:** Rabbit
- **Clone:** nan
- **Application:** IHC(P), WB
- **Reactivity:** Ms, Hu, Rt

ANTIGEN PREPARATION

A synthetic peptide corresponding to the C-terminus of human ER81 protein. This sequence is identical within human, rat, mouse, bovine, dog and chicken.

BACKGROUND

The ETS transcription factors Ets2, ER81 and Elk1 belong to the Ets transcription factor family. ER81 (also designated ETV1) binds the motif 5'-CGGAA/T-3'. It is a prerequisite for normal development. An abnormal regulation contributes to neoplasia. ER81 is highly expressed in brain, testis, lung and heart. ER81 is also moderately expressed in spleen, pancreas, colon and small intestine. During development, ER81, PEA3 and ERM display unique expression patterns which suggest these transcriptional factors play an important role in organogenesis. ERK-1 activates ER81 transcriptional activity while MAPKAP kinase 2 inhibits ER81. ER81 also can be acetylated at N-terminus (Lys33 and Lys116).

PURIFICATION

The Rabbit IgG is purified by Epitope Affinity Purification

FORMULATION

This affinity purified antibody is supplied in sterile Phosphatebuffered saline (pH7.2) containing antibody stabilizer

SPECIFICITY

This antibody recognizes ~56 kDa of ER81 protein. This antibody also reacts with human, mouse and rat. The other species are not tested.

STORAGE

The antibodies are stable for 24 months from date of receipt when stored at -20oC to -70oC. The antibodies can be stored at 2oC-8oC for three month without detectable loss of activity. Avoid repeated freezing-thawing cycles.

APPLICATIONS/SUGGESTED WORKING DILUTIONS*

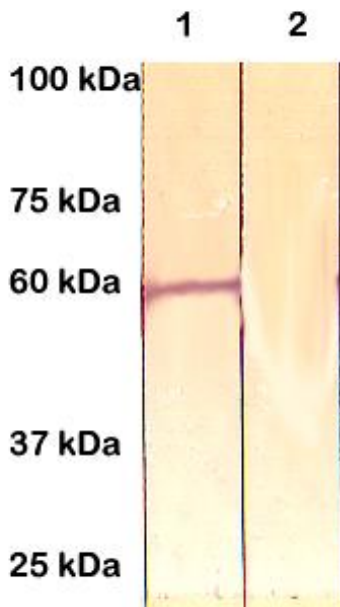
- Western Blot: 0.1-1 µg/ml
- ELISA: 0.01-0.1 µg/ml
- Immunoprecipitation: 2-5 µg/ml
- IHC: 2-10 µg/ml
- Flow cytometry: Not tested
- Molecular Weight: 62.0
- Positive Control: Kidney Tissue
- Cellular Location: Cell Membrane

*Optimal dilutions should be determined by researchers for the specific applications.

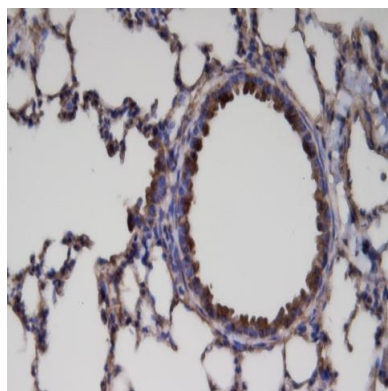
FOR RESEARCH USE ONLY.

AbboMax, Inc 2528 Qume Drive, Suite 8, San Jose, California 95131, USA
1 408-573-1898 (Tel). 1 408-573-1858 (Fax). www.abbomax.com info@abbomax.com

DATA ATTACHMENTS



Western Blot: The tissue lysate derived from mouse brain was immunoprobed by Rabbit anti- ER81 (Cat#602-930) at 1:500. An immunoreactive band is observed around ~56kDa (lane 1). This band is blocked by pre-incubation with immunizing peptide (Lane 2)



Immunohistochemistry: Lung tissue (FFPE) stained with Rabbit anti-ER81 (Cat# 602-930) at 1:200 for 10 min @ RT. Staining of formalin-fixed tissue requires boiling tissue sections in 10 mM Citrate Buffer, pH 6.0 for 10 min followed by cooling at RT for 20 min.

REFERENCES

FOR RESEARCH USE ONLY.

AbboMax, Inc 2528 Qume Drive, Suite 8, San Jose, California 95131, USA
1 408-573-1898 (Tel). 1 408-573-1858 (Fax). www.abbomax.com info@abbomax.com