



Rabbit anti MMP-13 Polyclonal Antibody

Alternative Name(s): Matrix metalloproteinase 13

Order Information

- **Description:** MMP-13
- **Catalogue:** 602-840
- **Lot:** See label
- **Size:** 100ug/200ul
- **Host:** Rabbit
- **Clone:** nan
- **Application:** IHC(P), WB
- **Reactivity:** Hu

ANTIGEN PREPARATION

A synthetic peptide corresponding to the hinge of human MMP13 protein. This sequence is identical among the human, mouse and rat origins.

BACKGROUND

Proteins of the matrix metalloproteinase (MMP) family are involved in the breakdown of extracellular matrix in normal physiological processes, such as embryonic development, reproduction, and tissue remodeling, as well as in disease processes, such as arthritis and metastasis. Most MMP's are secreted as inactive proproteins which are activated when cleaved by extracellular proteinases. Unpaired specific MMPs by tissue inhibitor of MMPs (TIMPs) are related in the invasive tumor processes. Interstitial collagenase (MMP-1)(52 kDa), gelatinase A/type IV collagenase (MMP-2) (72 kDa), and gelatinase B/type V collagenase (MMP-9) (92 kDa) dissolve extracellular matrix (ECM) and may initiate and promote angiogenesis. Human collagenase-3 (MMP13) is a recently identified member of the matrix metalloproteinase (MMP) family that is expressed in breast carcinomas and in articular cartilage from arthritic patients. This protein is secreted as a 60 kDa proenzyme and active form of 48 kDa by cleavage.

PURIFICATION

The Rabbit IgG is purified by Epitope Affinity Purification

FORMULATION

This affinity purified antibody is supplied in sterile Phosphatebuffered saline (pH7.2) containing antibody stabilizer

SPECIFICITY

This antibody recognizes ~60 and 48 kDa human MMP-13. It also reacts with mouse and rat. The other species are not tested

STORAGE

The antibodies are stable for 24 months from date of receipt when stored at -20oC to -70oC. The antibodies can be stored at 2oC-8oC for three month without detectable loss of activity. Avoid repeated freezing-thawing cycles.

APPLICATIONS/SUGGESTED WORKING DILUTIONS*

- Western Blot: 0.1-1 µg/ml
- ELISA: 0.01-0.1 µg/ml
- Immunoprecipitation: 2-5 µg/ml
- IHC: 2-10 µg/ml
- Flow cytometry: Not tested
- Molecular Weight: 55.0
- Positive Control: Kidney Tissue
- Cellular Location: Cell Membrane

FOR RESEARCH USE ONLY.

AbboMax, Inc 2528 Qume Drive, Suite 8, San Jose, California 95131, USA
1 408-573-1898 (Tel). 1 408-573-1858 (Fax). www.abbomax.com info@abbomax.com



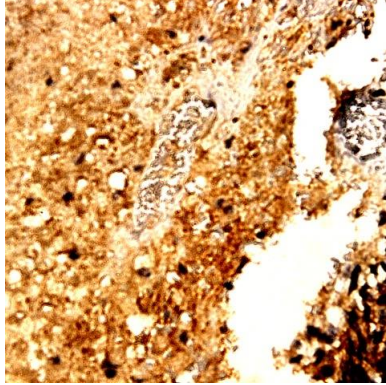
*Optimal dilutions should be determined by researchers for the specific applications.

FOR RESEARCH USE ONLY.

AbboMax, Inc 2528 Qume Drive, Suite 8, San Jose, California 95131, USA
1 408-573-1898 (Tel). 1 408-573-1858 (Fax). www.abbomax.com info@abbomax.com



DATA ATTACHMENTS



Immunohistochemistry: Human Breast carcinoma (FFPE) stained with Rabbit anti-MMP-13 (Cat# 602-840) at 1:200 for 10 min @ RT. Staining of formalin-fixed tissue requires boiling tissue sections in 10 mM Citrate Buffer, pH 6.0 for 10 min followed by cooling at RT for 20 min.

REFERENCES

FOR RESEARCH USE ONLY.

AbboMax, Inc 2528 Qume Drive, Suite 8, San Jose, California 95131, USA
1 408-573-1898 (Tel). 1 408-573-1858 (Fax). www.abbomax.com info@abbomax.com