



## Rabbit anti Histone H3 (pSer10) Polyclonal Antibody

Alternative Name(s): HIST1H3A

### Order Information

- **Description:** Histone H3 (pSer10)
- **Catalogue:** 602-810
- **Lot:** See label
- **Size:** 100ug/200ul
- **Host:** Rabbit
- **Clone:** nan
- **Application:** WB, IP, IF
- **Reactivity:** Hu, Ms, Rt

### **ANTIGEN PREPARATION**

A synthetic peptide containing -QTARKSTGGKA-with phosphorylated serine 10 of human Histone H3.

### **BACKGROUND**

Histones are basic nuclear proteins that together with DNA make up the nucleosome structure in eukaryotes. Nucleosomes consist of approximately 146 bp of DNA wrapped around a histone octamer composed of pairs of each of the four core histones (H2A, H2B, H3, and H4). Histone H1 and the N-terminal tail of H3 have key roles in the folding and inter-association of the chromatin fiber. Histone phosphorylation influences transcription, chromosome condensation, DNA repair and apoptosis. The phosphorylation of Histone H3 at Serine 10 is linked to gene activation, prevents methylation at Lys9 but facilitates acetylation of H3 and H4. pSer10 is also associated with c-fos and c-myc genes.

### **PURIFICATION**

The Rabbit IgG is purified by site-modified Epitope Affinity Purification.

### **FORMULATION**

This affinity purified antibody is supplied in sterile Phosphatebuffered saline (pH7.2) containing antibody stabilizer

### **SPECIFICITY**

This antibody only recognizes ~ 17 kDa of phosphorylated Histone H3 at Serine 10. It does not cross react to non-phosphorylated Histone H3.

### **STORAGE**

The antibodies are stable for 24 months from date of receipt when stored at -20oC to -70oC. The antibodies can be stored at 2oC-8oC for three month without detectable loss of activity. Avoid repeated freezing-thawing cycles.

### **APPLICATIONS/SUGGESTED WORKING DILUTIONS\***

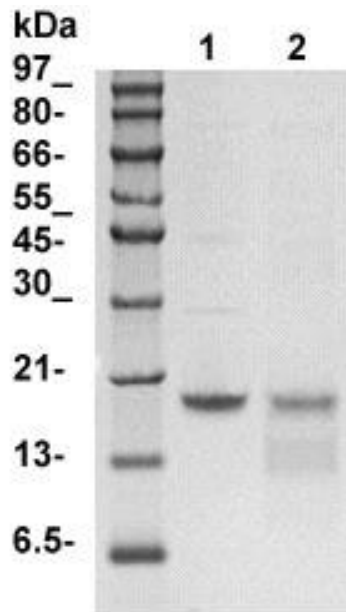
- Western Blot: 0.1-1 µg/ml
- ELISA: 0.01-0.1 µg/ml
- Immunoprecipitation: 2-5 µg/ml
- IHC: 2-10 µg/ml
- Flow cytometry: Not tested
- Molecular Weight: 17.0
- Positive Control: Kidney Tissue
- Cellular Location: Cell Membrane

\*Optimal dilutions should be determined by researchers for the specific applications.

### **FOR RESEARCH USE ONLY.**

AbboMax, Inc 2528 Qume Drive, Suite 8, San Jose, California 95131, USA  
1 408-573-1898 (Tel). 1 408-573-1858 (Fax). [www.abbomax.com](http://www.abbomax.com) [info@abbomax.com](mailto:info@abbomax.com)

**DATA ATTACHMENTS**



Western Blot: The Cell nuclear extract derived from HeLa cells (lane 1) or treated with phosphatase (lane 2) were resolved onto 12% SDS-PAGE, transferred onto NC membrane, and immuno-blotted by Rb anti Histone H3(pS10) (Cat#602-810) at 1:500. An immunoreactive band around ~17 kDa was observed.

**REFERENCES**

**FOR RESEARCH USE ONLY.**